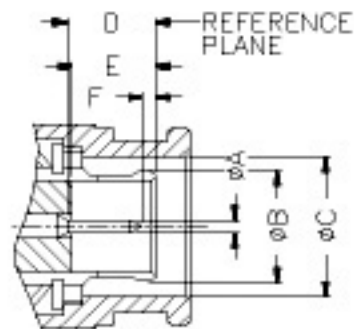
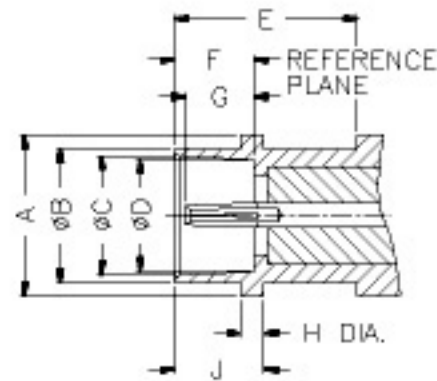


INTERFACE MATING DIMENSIONS



PLUG

Letter	Millimeters	
	Minimum	Maximum
A	0.72	0.76
B	FLARED TO MEET GOOD ELECTRICAL CONTACT	
C	7.70	7.80
D	4.55	5.05
E	4.55	4.85
F	0.92	1.42



JACK

Letter	Millimeters	
	Minimum	Maximum
A	8.99	9.09
B	7.44	7.54
C	6.65	6.75
D	6.22	6.27
E	7.82	—
F	4.35	4.55
G	3.85	4.35
H	1.27	1.43
J	4.32	4.42

NOTE 1 : I.D. TO MEET VSWR AND CONTACT RESISTANCE
WHEN MATED WITH 0.72/0.76 MM DIA. PIN.