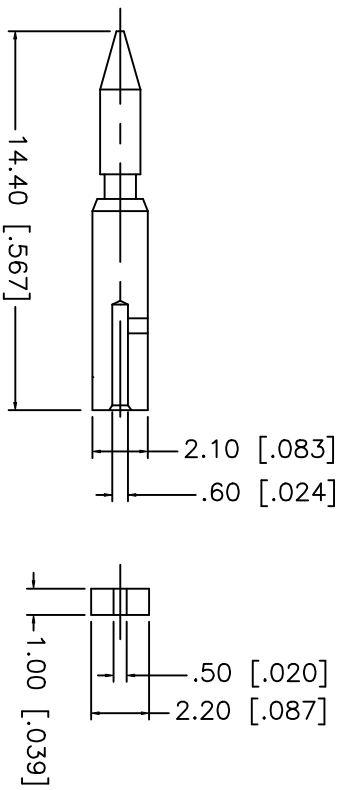
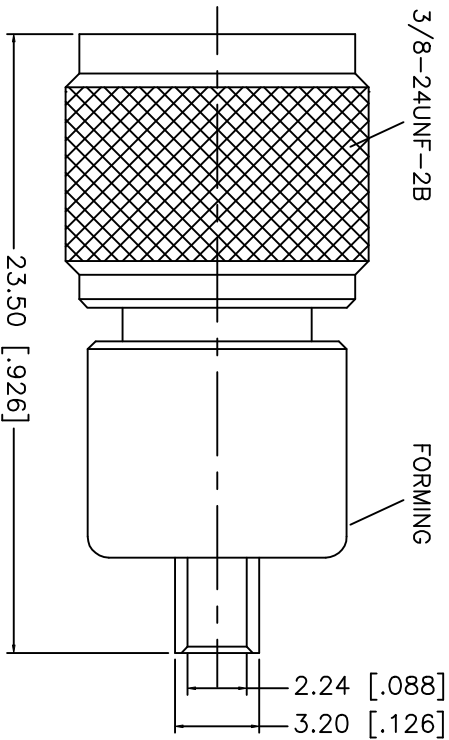
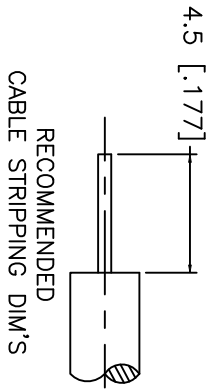


REV.	DATE	DESCRIPTION
A	03/20/02	ADD BARREL PLATING



CRIMP NOTES:
1. CRIMPED CONTACT PIN
HEX CRIMP SIZE .068"

DESCRIPTION	MATERIAL	FINISH	UNLESS OTHERWISE SPECIFIED DIMENSIONS ARE IN MILLIMETERS DIMENSIONS IN [] ARE IN INCHES FOR CUSTOMER REFERENCE ONLY	APPROVALS	DATE	TITLE	SCALE	PART NO.	DWG. NO.	SHEET	REV.
1 BODY	BRASS	NICKEL		DRAWN G.R.S.	03/20/02	MINI-UHF CRIMP PLUG - SEMI RIGID (FOR .085", .086" CABLE)	A	99001	182329.DWG	1	A
2 INSULATOR	TEFLON	NATURAL									
3 RETAINER RING	SUS 304	NATURAL		CHECKED							
4 CONTACT PIN	BRASS	GOLD		ISSUED							
5 BARREL	BRASS	GOLD									
6											
7											
8											

Amphenol - Connex
CONNECTOR CORPORATION

UNLESS OTHERWISE SPECIFIED
DIMENSIONS FOR MILLIMETERS ARE:
0.5-6 = ± 0.2
6-30 = ± 0.4
30-120 = ± 0.6
120-315 = ± 1
315-1000 = ± 1.6
1000-2000 = ± 2.4

DO NOT SCALE DRAWING