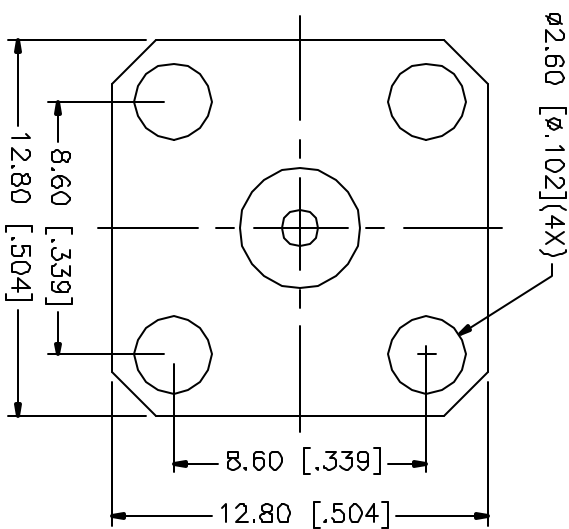
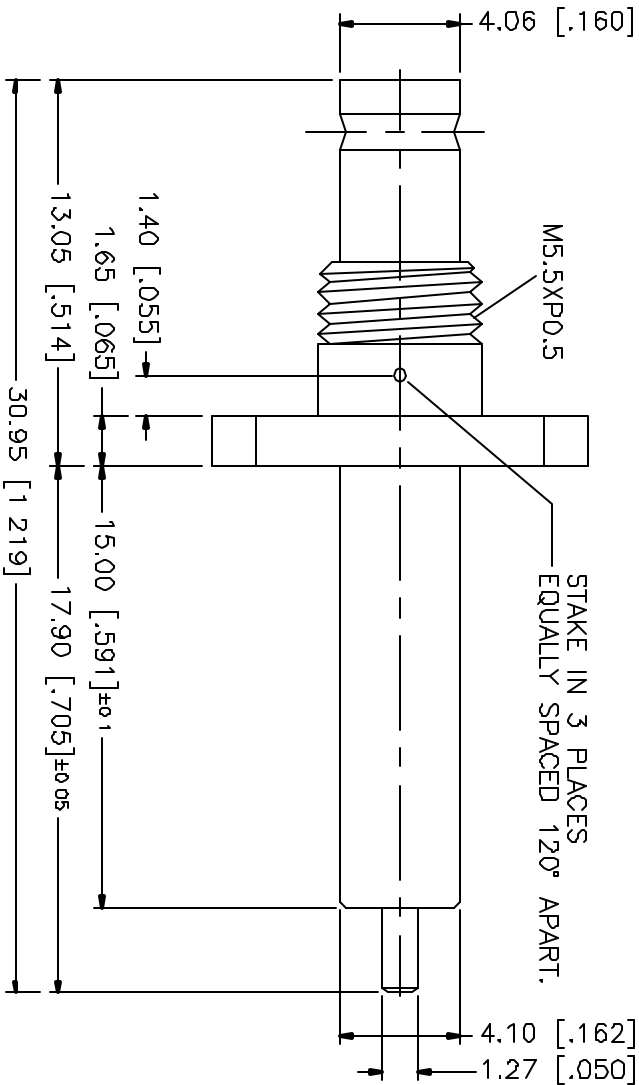
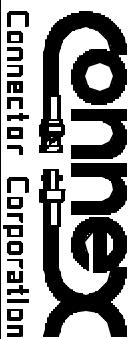


REV.	DATE	DESCRIPTION
NC	10/11/00	INITIAL RELEASE



IMPEDANCE: 50ohm  
 FREQUENCY RANGE 0-4 GHz  
 WORKING VOLTAGE: 360 V  
 TEMPERATURE RANGE: -65° ~ +125°C  
 -CONNECTOR ACCORDING TO NF C 93-571  
 -PACKING IN TRAY WITH COMMERCIAL PART NUMBER AND DATE CODE.

8	UNLESS OTHERWISE SPECIFIED DIMENSIONS ARE IN MILLIMETERS	APPROVALS	DATE	TITLE	SCALE	NA	PART NO.	SHEET	REV.
7	DIMENSIONS IN [ ] ARE IN INCHES FOR CUSTOMER REFERENCE ONLY <td>DRAWN</td> <td>10/11/00</td> <td>1.0/2.3 PANEL RECEPTACLE JACK WITH FLANGE MOUNT, BLUNT POST TERMINAL</td> <td>A</td> <td>NA</td> <td>282101</td> <td>1 OF 1</td> <td>NC</td>	DRAWN	10/11/00	1.0/2.3 PANEL RECEPTACLE JACK WITH FLANGE MOUNT, BLUNT POST TERMINAL	A	NA	282101	1 OF 1	NC
6		CHECKED							
5	UNLESS OTHERWISE SPECIFIED TOLERANCES FOR MILLIMETERS ARE:	ISSUED							
4	0.5-6 = ± 0.2								
3	8-30 = ± 0.4								
2	30-120 = ± 0.8								
1	120-315 = ± 1								
	315-1000 = ± 1.5								
	1000-2000 = ± 2.4								
	DO NOT SCALE DRAWING								



Connector Corporation  
 1.0/2.3 PANEL RECEPTACLE JACK  
 WITH FLANGE MOUNT, BLUNT POST TERMINAL

282101.DWG