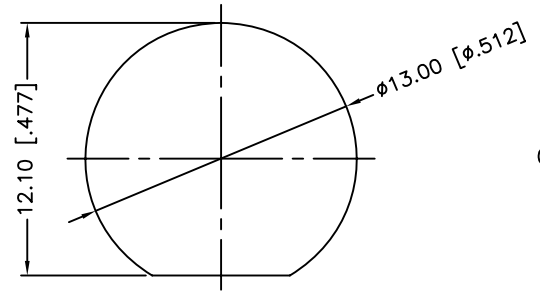
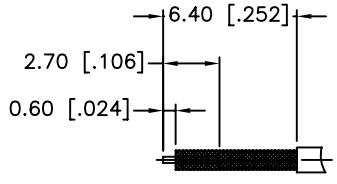


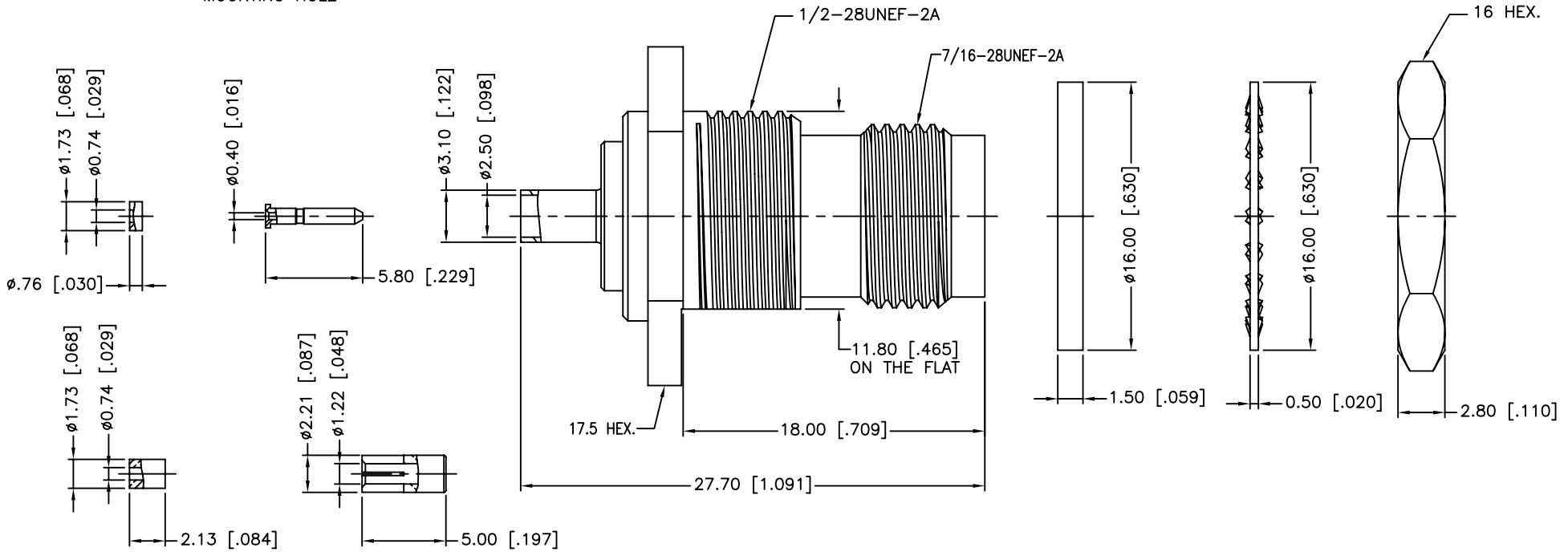
REV.	DATE	ECR NO.	DESCRIPTION
NC	09/25/10	XXXXXX	INITIAL RELEASE



RECOMMENDED MOUNTING HOLE



RECOMMENDED CABLE STRIPPING DIM'S



1. CRIMPED FERRULE  
HEX CRIMP SIZE .105"
2. SOLDER CENTER CONTACT

12	INNER FERRULE	BRASS	NICKEL	1
11	SLEEVE	BRASS	NICKEL	1
10	INSULATOR	PTFE	NATURAL	1
9	CONTACT PIN	BRASS	GOLD	1
8	HEX NUT	BRASS	NICKEL	1
7	LOCK WASHER	BRASS	NICKEL	1
6	GASKET	RUBBER	RED	1
5	BARREL	BRASS	NICKEL	1
4	BODY	BRASS	NICKEL	1
3	CONTACT PIN	PHOSPHOR BRONZE	GOLD	1
2	INSULATOR	PTFE	NATURAL	1
1	HOUSING	BRASS	NICKEL	1
	DESCRIPTION	MATERIAL	FINISH	QTY

UNLESS OTHERWISE SPECIFIED DIMENSIONS ARE IN MILLIMETERS. DIMENSIONS IN [ ] ARE IN INCHES AND FOR CUSTOMER REFERENCE ONLY.

UNLESS OTHERWISE SPECIFIED TOLERANCES FOR MILLIMETERS ARE:  
0.5 - 8mm ± 0.20mm  
8 - 30mm ± 0.40mm  
30 - 120mm ± 0.50mm

UNLESS OTHERWISE SPECIFIED TOLERANCES FOR INCHES ARE:  
.020 - .315 = ± 0.007"  
.315 - 1.180 = ± 0.015"  
1.180 - 4.724 = ± 0.020"

DO NOT SCALE DRAWING

APPROVALS	DATE
DRAWN M.ZHANG	09/25/10
CHECKED	
ISSUED	
SHEET 1 OF 1	
CAD FILE	C:/CONNEX/122526RP.DWG

**Amphenol Connex**

PART DESCRIPTION  
**RP-TNC BULKHEAD CRIMP JACK  
(FOR 1.13 MM CABLE)**

PART NO.  
**122526RP**

DWG. NO.	122526RP.DWG	REV.	NC	SIZE	A	SCALE	NA
----------	--------------	------	----	------	---	-------	----