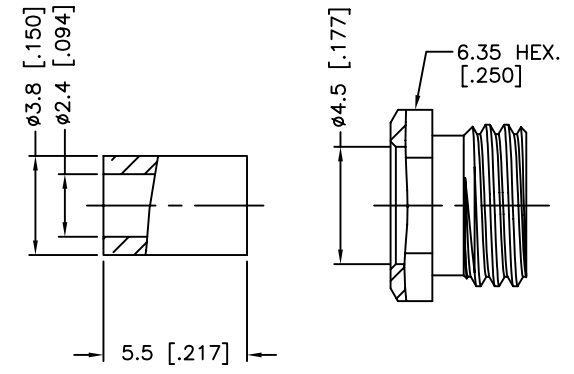
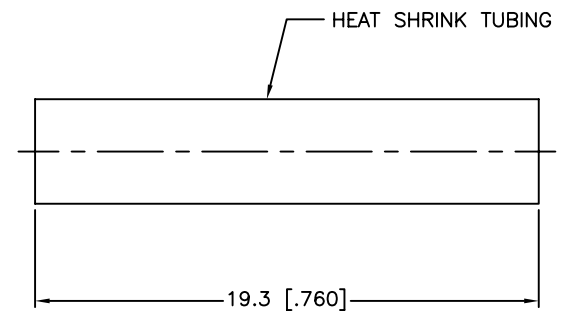
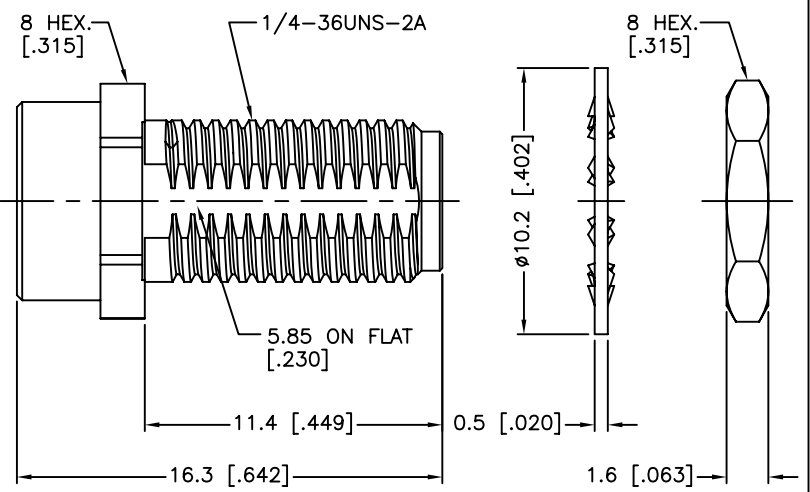
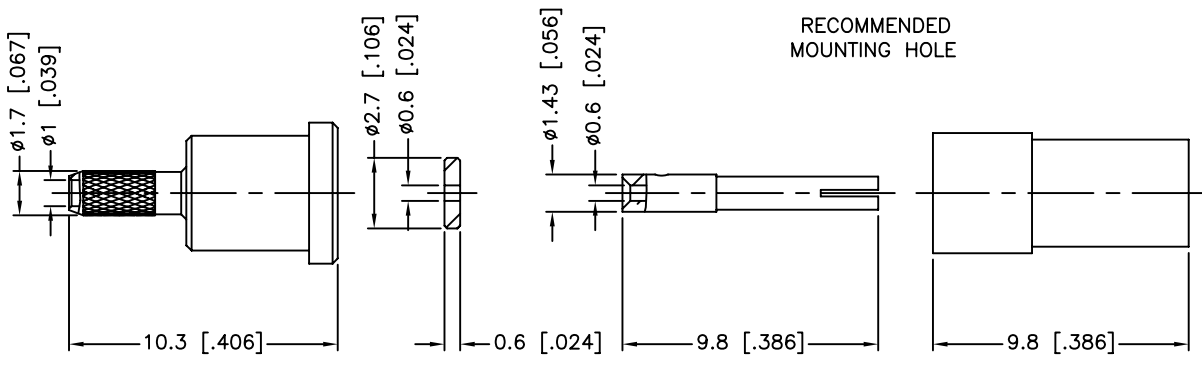
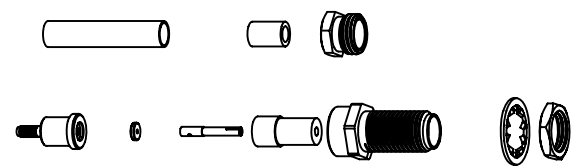
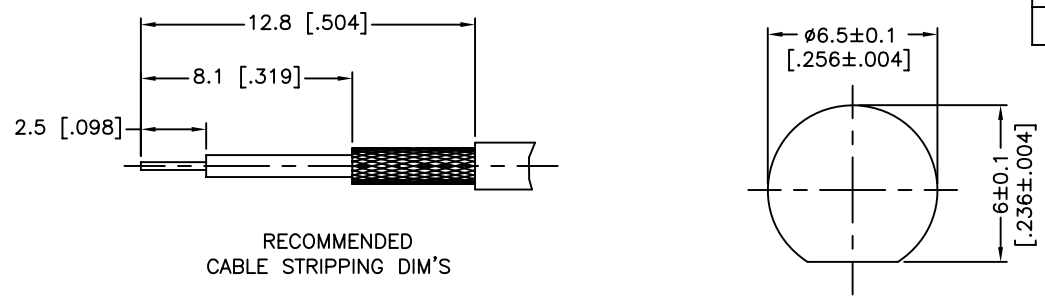


REV.	DATE	ECR NO.	DESCRIPTION
NC	05/26/11	XXXXXX	INITIAL RELEASE



NOTE:  
 1. CRIMPED FERRULE  
 HEX CRIMP SIZE 128"  
 2. CONTACT PIN TO SOLDER  
 3. MAX. PANEL THICKNESS=3.2mm

QTY	DESCRIPTION	MATERIAL	FINISH
1	HEAT SHRINK TUBING		BLACK
1	HEX NUT	BRASS	GOLD
1	LOCK WASHER	BRASS	GOLD
1	FERRULE	COPPER	GOLD
1	HEX NUT	BRASS	GOLD
1	BARREL	BRASS	GOLD
1	INSULATOR	PTFE	NATURAL
1	CONTACT PIN	BER. COPPER	GOLD
1	INSULATOR	PTFE	NATURAL
1	BODY	BRASS	GOLD

APPROVALS	DATE
DRAWN M.ZHANG	05/26/11
CHECKED	
ISSUED	
SHEET 1 OF 1	
CAD FILE C:/CONNEX/132220-10.DWG	

**Amphenol Connex**

**SMA BULKHEAD CRIMP JACK  
(FOR RG-178B/U, 196A/U CABLE)**

PART NO. **132220-10**

DWG. NO. 132220-10.DWG    REV. NC    SIZE A    SCALE NA

UNLESS OTHERWISE SPECIFIED DIMENSIONS ARE IN MILLIMETERS. DIMENSIONS IN [ ] ARE IN INCHES AND FOR CUSTOMER REFERENCE ONLY.

UNLESS OTHERWISE SPECIFIED TOLERANCES FOR MILLIMETERS ARE:  
 0.5 - 8mm ± 0.20mm  
 8 - 30mm ± 0.40mm  
 30 - 120mm ± 0.50mm

UNLESS OTHERWISE SPECIFIED TOLERANCES FOR INCHES ARE:  
 .020 - .315 = ± 0.007"  
 .315 - 1.180 = ± 0.015"  
 1.180 - 4.724 = ± 0.020"

DO NOT SCALE DRAWING