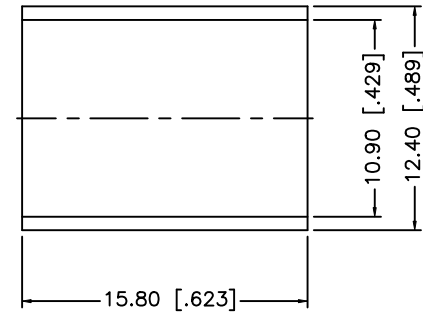
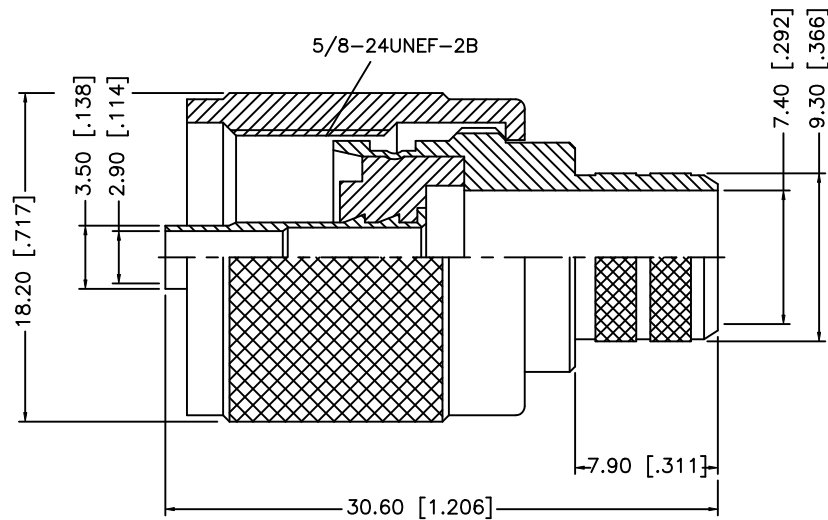
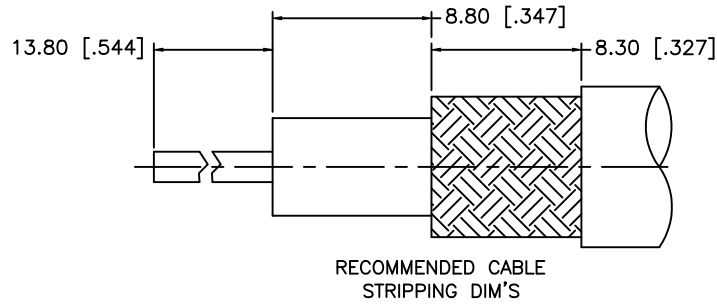


| REV. | DATE | ECR NO. | DESCRIPTION |
|------|----------|---------|-----------------------|
| NC | 06/13/06 | - | INITIAL RELEASE |
| A | 10/27/08 | - | UPDATE DRAWING FORMAT |



NOTE:

1. CRIMPED FERRULE HEX CRIMP SIZE .429" [10.90]
2. CRIMPED CONTACT PIN HEX CRIMP SIZE .118" [3.00]

| | | | | UNLESS OTHERWISE SPECIFIED DIMENSIONS ARE IN MILLIMETERS. DIMENSIONS IN [] ARE IN INCHES AND FOR CUSTOMER REFERENCE ONLY. | APPROVALS | DATE | <h1 style="color: blue;">Amphenol Connex</h1> | | | | | | |
|-------------|-------------|--------|---------|--|-----------|-------|---|----------------|--|--|----------|---|----------|
| 8 | | | | UNLESS OTHERWISE SPECIFIED TOLERANCES FOR MILLIMETERS ARE: 0.5 - 8mm ± 0.20mm 8 - 30mm ± 0.40mm 30 - 120mm ± 0.50mm UNLESS OTHERWISE SPECIFIED TOLERANCES FOR INCHES ARE: .020 - .315 = ± 0.007" .315 - 1.180 = ± 0.015" 1.180 - 4.724 = ± 0.020" DO NOT SCALE DRAWING | DRAWN | GRS | | | | | 10/27/08 | UHF CRIMP PLUG (FOR BELDEN 8214, 9913, 9914, LMR400 CABLE) | |
| 7 | | | | | CHECKED | | | | | | | | |
| 6 | | | | | ISSUED | | | | | | | | |
| 5 | FERRULE | COPPER | NICKEL | | 1 | SHEET | 1 OF 1 | 182130S | | | | | |
| 4 | CONTACT PIN | BRASS | SILVER | | 1 | | | | | | | | |
| 3 | INSULATOR | PTFE | NATURAL | 1 | | | 182130S | | | | | | |
| 2 | SHELL | BRASS | NICKEL | 1 | | | | | | | | | |
| 1 | BODY | BRASS | SILVER | 1 | | | 182130S | | | | | | |
| DESCRIPTION | | | | MATERIAL | FINISH | QTY | | | | | | | DWG. NO. |