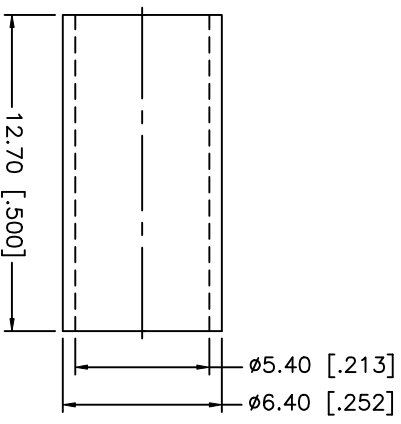
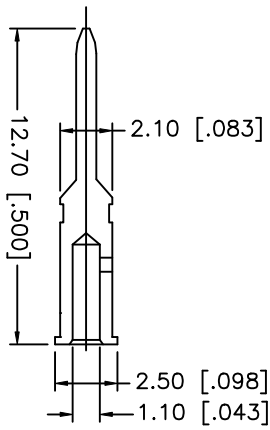
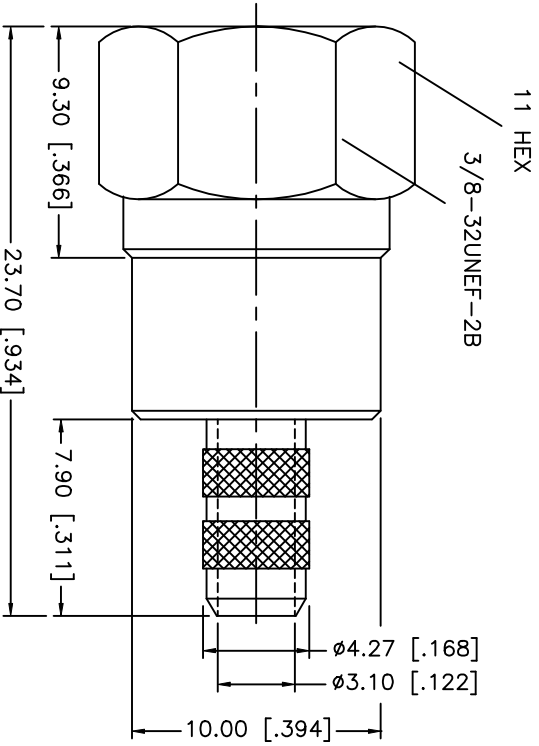
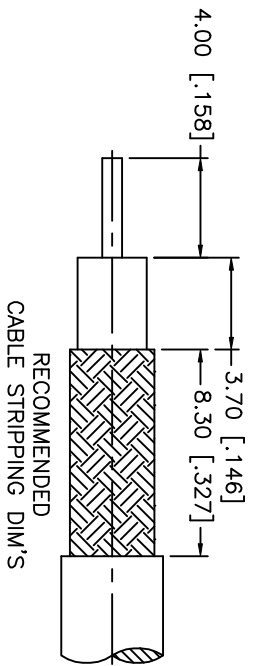


REV.	DATE	DESCRIPTION
NC	11/08/99	INITIAL RELEASE



- CRIMP NOTES:
1. CRIMPED FERRULE  
HEX CRIMP SIZE .213"
  2. CONTACT PIN TO SOLDER

DESCRIPTION	MATERIAL	FINISH	UNLESS OTHERWISE SPECIFIED DIMENSIONS ARE IN MILLIMETERS DIMENSIONS IN [ ] ARE IN INCHES FOR CUSTOMER REFERENCE ONLY	APPROVALS	DATE	TITLE	
1 SHELL	BRASS	NICKEL	UNLESS OTHERWISE SPECIFIED TOLERANCES FOR MILLIMETERS ARE: 0.5-6 = ± 0.2 6-30 = ± 0.4 30-120 = ± 0.6 120-315 = ± 1 315-1000 = ± 1.6 1000-2000 = ± 2.4	DRAWN	02/24/02	<b>Amphenol - Connex</b> CONNECTOR CORPORATION F CRIMP PLUG (FOR RG-58/U, 58C/U CABLE) 99001	
2 BARREL	BRASS	NICKEL		CHECKED			
3 INSULATOR	DELRIN	NATURAL		ISSUED			
4 BODY	BRASS	NICKEL					
5 CONTACT PIN	BRASS	GOLD					
6 FERRULE	COPPER	NICKEL					
7							
8				DO NOT SCALE DRAWING			