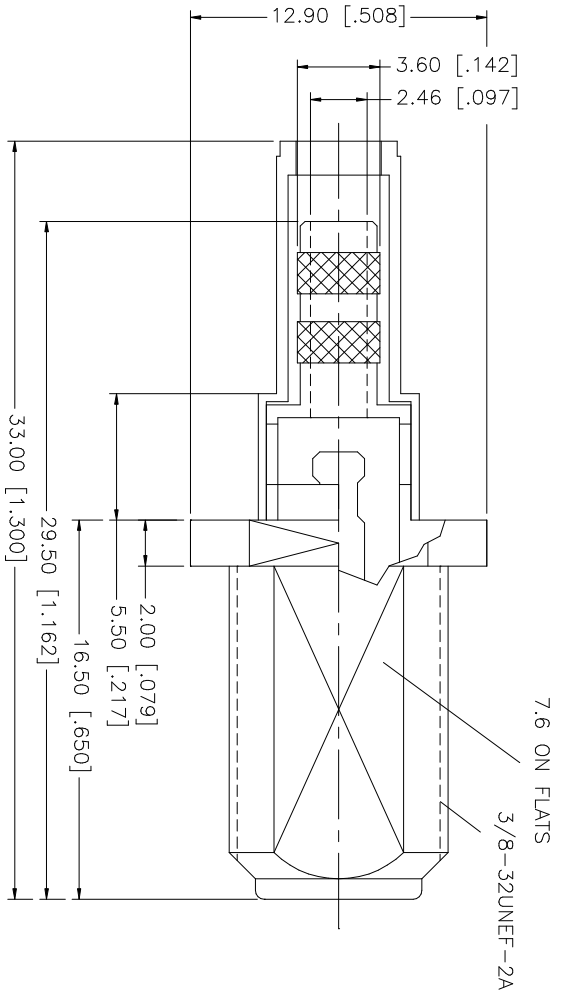
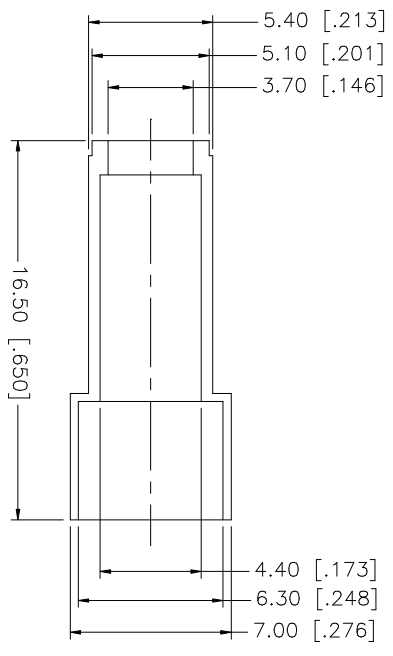
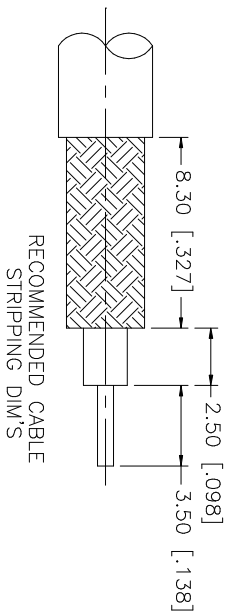


REV.	DATE	DESCRIPTION
NC	09/11/03	RENUMBERED FROM 222167-10



- NOTES:
1. CRIMPED FERRULE
HEX CRIMP SIZE .187"
 2. CONTACT PIN TO SOLDER
 3. MAX. PANEL THICKNESS = 4.5mm
 4. MEETS SCITE INTERFACE DIMENSIONS

QTY	FINISH	MATERIAL	DESCRIPTION
1	TIN LEAD	BRASS	1 BODY
1	NATURAL	P.P.	2 INSULATOR
1	GOLD	BER. COPPER	3 CONTACT PIN
1	NATURAL	TIN-LEAD	4 INSULATOR
1	NATURAL	BRASS	5 FERRULE
1	NATURAL	BRASS	6 INSULATOR
1	NATURAL	BRASS	7 INSULATOR
1	NATURAL	BRASS	8 FERRULE

UNLESS OTHERWISE SPECIFIED DIMENSIONS ARE IN MILLIMETERS DIMENSIONS IN PARENTHESES ARE IN INCHES AND FOR CUSTOMER REFERENCE ONLY.	UNLESS OTHERWISE SPECIFIED DIMENSIONS ARE IN MILLIMETERS DIMENSIONS IN PARENTHESES ARE IN INCHES AND FOR CUSTOMER REFERENCE ONLY.
TOLERANCES FOR MILLIMETERS ARE:	TOLERANCES FOR MILLIMETERS ARE:
0.5 - 8mm ± 0.20mm	0.5 - 8mm ± 0.20mm
8 - 30mm ± 0.40mm	8 - 30mm ± 0.40mm
30 - 120mm ± 0.50mm	30 - 120mm ± 0.50mm
UNLESS OTHERWISE SPECIFIED DIMENSIONS FOR METRIC ARE:	UNLESS OTHERWISE SPECIFIED DIMENSIONS FOR METRIC ARE:
.020 - .315 = ± 0.007"	.020 - .315 = ± 0.007"
.315 - 1.180 = ± 0.015"	.315 - 1.180 = ± 0.015"
1.180 - 4.724 = ± 0.020"	1.180 - 4.724 = ± 0.020"

APPROVALS	DATE
DRAWN G.R.S.	09/11/03
CHECKED	
ISSUED	
SHEET 1 OF 1	

PART DESCRIPTION	PART NO.
F BULKHEAD CRIMP JACK (FOR 735A CABLE)	222190

CAD FILE	DWG. NO.	REV.	NC	SIZE	SCALE
C:/222/222190.DWG	222190.DWG			A	NA

Amphenol Connex