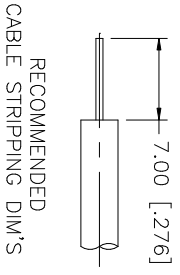
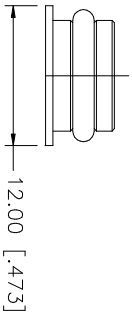
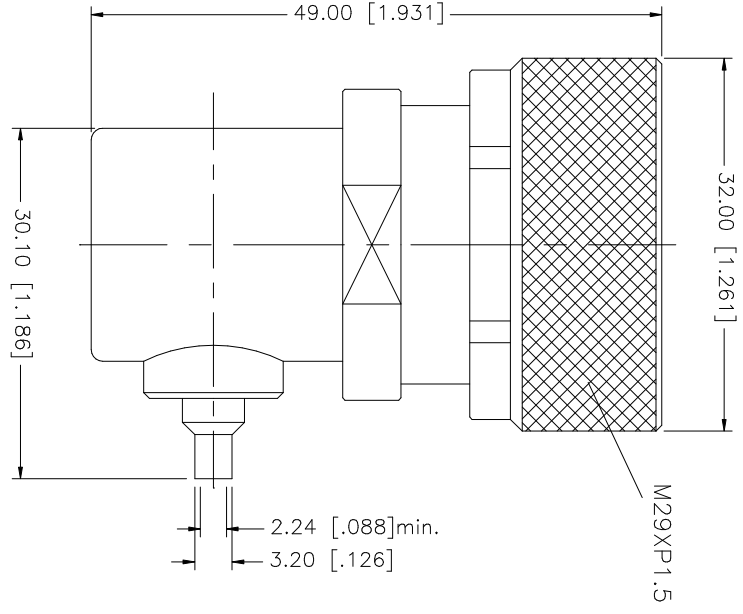


REV.	DATE	DESCRIPTION
NC	08/31/99	INITIAL RELEASE
A	07/30/06	UPDATE DRAWING FORMAT



NOTE:
1. CONTACT PIN TO SOLDER

DESCRIPTION	MATERIAL	FINISH	QTY
1 BODY	BRASS	NEXCOTE	1
2 INSULATOR	TEFLON	NATURAL	1
3 CONTACT PIN	BRASS	SILVER	1
4 COVER	BRASS	NEXCOTE	1
5 GASKET	SILICONE	BLACK	1
6			
7			
8			

UNLESS OTHERWISE SPECIFIED DIMENSIONS ARE IN MILLIMETERS. DIMENSIONS IN PARENS ARE IN INCHES AND FOR SUBSTITUTION (REFERENCE ONLY).	UNLESS OTHERWISE SPECIFIED TOLERANCES FOR MILLIMETERS ARE:	UNLESS OTHERWISE SPECIFIED TOLERANCES FOR INCHES ARE:
	0.5 - 8mm ± 0.20mm	.020 - .315 = ± 0.007"
	8 - 30mm ± 0.40mm	.315 - 1.180 = ± 0.015"
	30 - 120mm ± 0.50mm	1.180 - 4.724 = ± 0.020"

APPROVALS	DATE
DRAWN G.R.S.	07/30/06
CHECKED	
ISSUED	
SHEET 1 OF 1	

PART DESCRIPTION	PART NO.
7/16 R/A PLUG (FOR .085", .086" SEMI-RIGID CABLE)	272165

DO NOT SCALE DRAWING	CAD FILE	DWG. NO.	REV.	SIZE	SCALE
	C:/272/272165.DWG	272165.DWG	A	A	NA

Amphenol Connex