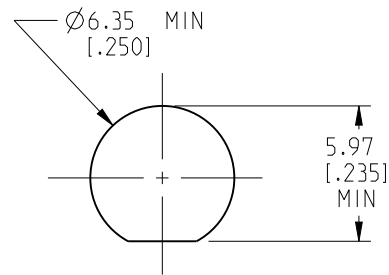


NOTES:

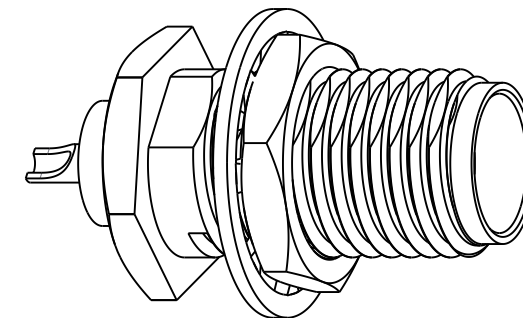
1. MATERIALS AND FINISHES:
 BODY, HEX NUT, & LOCK WASHER - STAINLESS STEEL, GOLD PLATING
 CONTACT - BERYLLIUM COPPER, GOLD PLATING
 INSULATOR - PTFE
2. ELECTRICAL:
 A. IMPEDANCE: 50 OHM
 B. DIELECTRIC WITHSTANDING VOLTAGE: 1000 VRMS, MIN.
3. MECHANICAL:
 A. DURABILITY: 500 CYCLES MIN.
 B. TEMPERATURE RANGE: -65° C TO 165° C
4. PACKAGING:
 A. QUANTITY: SINGLE PACK
 B. MARKING: BAG TO BE MARKED
 "AMPHENOL RF, 901-9211, AND DATE CODE"
 C. LOCK WASHER & HEX. NUT ARE PACKAGED LOOSE



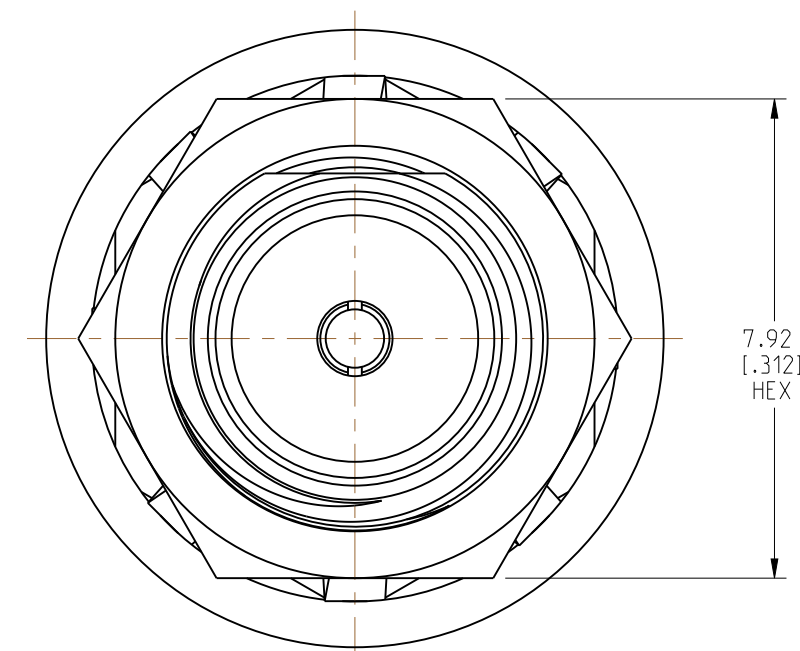
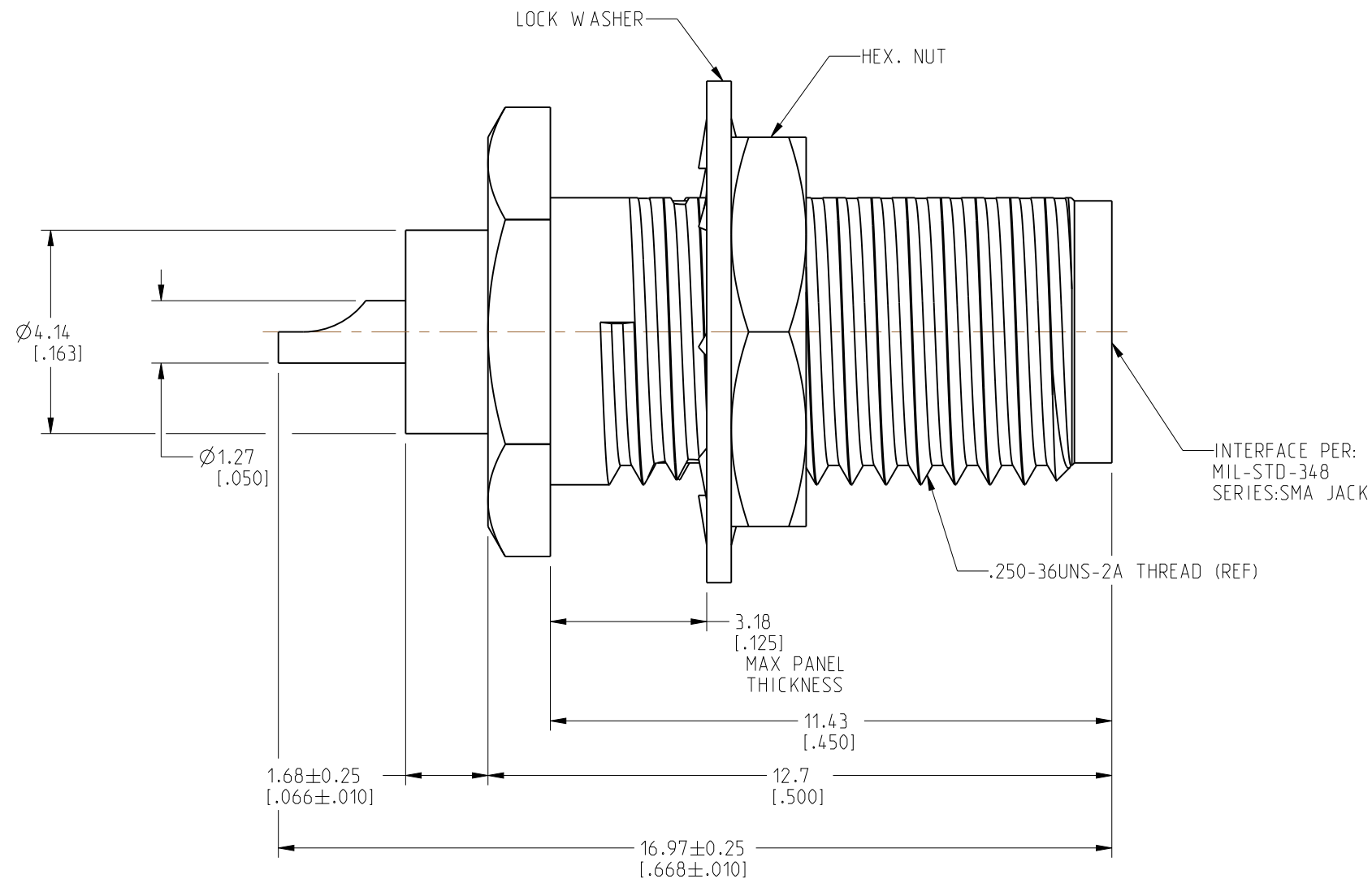
SCALE 3.000

RECOMMENDED MOUNTING HOLE DETAIL

| REVISIONS | | | | |
|-----------|---|-----------|-------|------|
| REV | DESCRIPTION | DATE | ECN | BY |
| - | RELEASE TO MFG. | ---- | ---- | ---- |
| L | CHANGE PLATING ON WASHER & ADD COD | 12/15/10 | 48366 | BM |
| M | UPDATED DRAWING FORMAT AND CHANGED PLATING OF BODY IN NOTE 1, ARFA BUY THIS CONNECTOR | 16-APR-26 | 17869 | SEH |



SCALE 4.000



CUSTOMER OUTLINE DRAWING
 ALL OTHER SHEETS ARE FOR INTERNAL USE ONLY

NOTICE: These drawings, specifications, or other data (1) are, and remain the property of Amphenol corp. (2) must be returned upon request; and (3) are confidential and not to be disclosed to any person other than those to whom they are given by Amphenol Corp. The furnishing of these drawings, specifications, or other data by Amphenol Corp., or to any other person to anyone for any purpose is not to be regarded by implication or otherwise in any manner licensing, granting rights to permitting such holder or any other person to manufacture, use or sell any product, process or design, patented or otherwise, that may in any way be related to or disclosed by said drawings, specifications, or other data.

UNLESS OTHERWISE SPECIFIED
 DIMENSIONS ARE METRIC (INCHES) AND TOLERANCES ARE:
 <0.5mm = ±0.05mm [$<0.020 = \pm 0.002$]
 0.5 - 6mm = ±0.1mm [$>0.020 - 0.236 = \pm 0.004$]
 >6.00 - 30mm = ±0.2mm [$>0.236 - 1.181 = \pm 0.008$]
 >30.00 - 120mm = ±0.3mm [$>1.181 - 4.725 = \pm 0.012$]

ANGLES = ±1°

MATERIAL
 SEE NOTES

ENGR.1
 S. HOFFLER

ENGR.2
 K.ZHANG

DATE
 09-Apr-26

TITLE
 SMA BULKHEAD RECEPTACLE

SHEET NO. 2 OF 2

SCALE: 8.0:1.0

Amphenol RF

| | | |
|------|----------------------|-----|
| SIZE | DRAWING NO. 901-9211 | REV |
| | ITEM NO. 901-9211 | |
| | PART NO. 901-9211 | M |

THIRD ANGLE PROJ.

REFERENCE
 D.O.R. 314454

EAR#
 EAR #