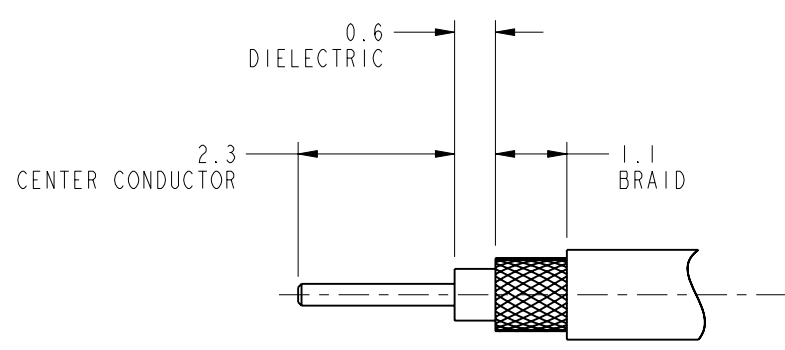


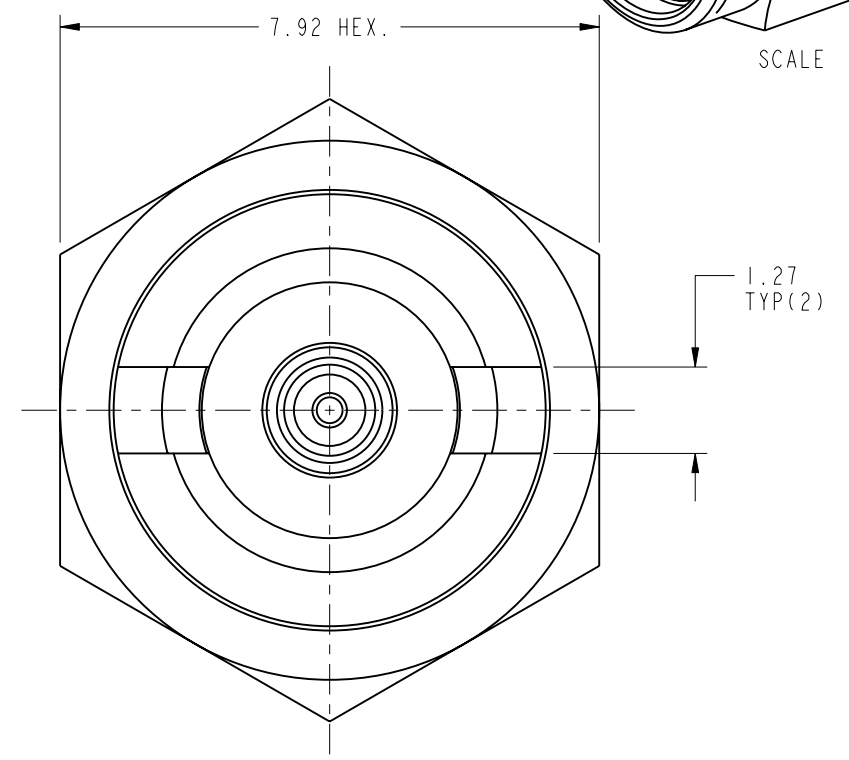
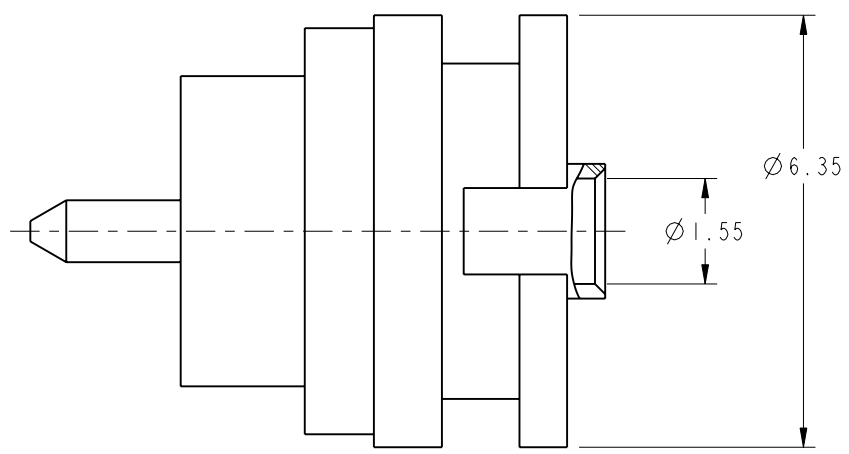
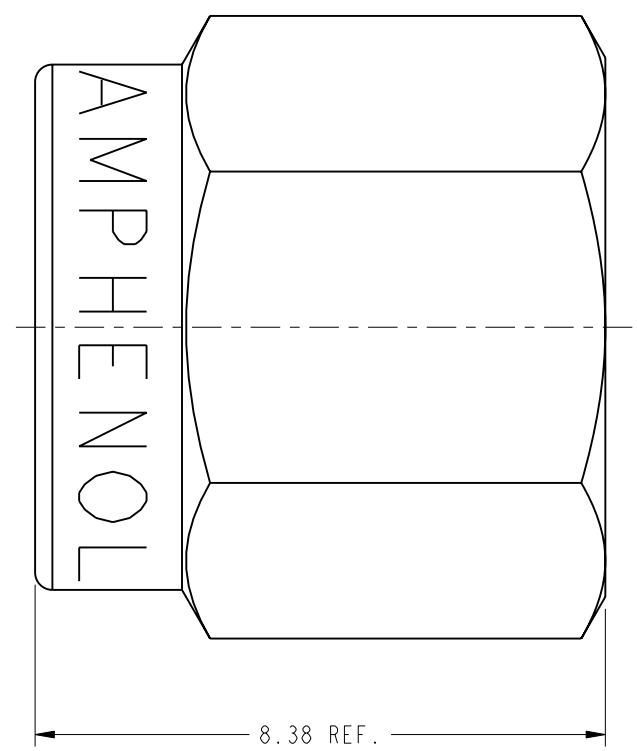
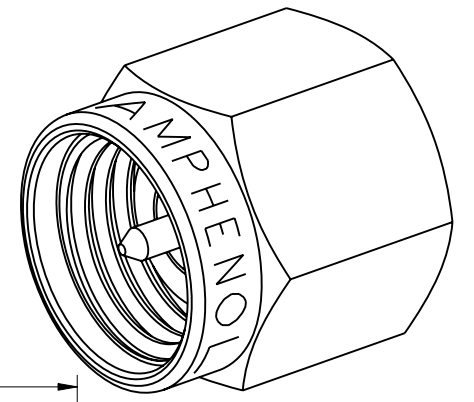
NOTES:

1. MATERIALS AND FINISHES:
 BODY - STAINLESS STEEL, PASSIVATED
 REAR BODY - BRASS, GOLD PLATING
 CONTACT - BRASS, GOLD PLATING
 INSULATOR - PTFE, NATURAL
2. ELECTRICAL:
 A. IMPEDANCE: 50 OHM
 B. FREQUENCY RANGE: DC - 2 GHz
 C. VSWR: 1.2 MAX
3. MECHANICAL:
 A. DURABILITY: 500 CYCLES MIN.
 B. TEMPERATURE RANGE: -65° C TO +165° C
4. PACKAGING:
 A. QUANTITY: SINGLE PACK
 B. MARKING: BAG TO BE MARKED
 "AMPHENOL, 901-10288, AND DATE CODE"
5. CABLE ASSEMBLY INSTRUCTIONS:
 A. TRIM CABLE AS SHOWN.
 B. SLIDE REAR BODY ONTO CABLE.
 C. SOLDER CABLE TO REAR BODY.
 D. PLACE CENTER CONTACT ON CABLE CENTER CONDUCTOR AND SOLDER.
 E. PRESS FIT THE ASSEMBLY INTO STAINLESS STEEL BODY
 UNTIL IT BOTTOMS AS SHOWN.
 F. COUPLING NUT TO BE ASSEMBLED WHILE ASSEMBLING CABLE WITH RETAINING RING (NOT PROVIDED)

THIRD ANGLE PROJ.



REVISIONS				
REV	DESCRIPTION	DATE	ECO	APPR
A	RELEASE TO MFG.	25-Dec-09	47868	SH
B	REMOVED RETAINING RING FROM BOM; COUPLING NUT TO BE SHIPPED LOOSE/RD-DMI0031002T1	13-Sep-12	47988	SH
C	GASKET FROM ASSEMBLED BECOME PACKAGED LOOSE VRD-DMI410220IR3	29-Oct-14	50232	RM
D	CONTACT MATERIAL WAS BERYLLIUM COPPER VRD-DMI507300IS2	05-Aug-15	50645	DD
E	SHOW "AMPHENOL" LOGO ON PRODUCT	12-Jan-18	06501	RM



CUSTOMER OUTLINE DRAWING
 ALL OTHER SHEETS ARE FOR INTERNAL USE ONLY

UNLESS OTHERWISE SPECIFIED, DIMENSIONS ARE IN METRIC AND TOLERANCES ARE: 0.5 - 6mm ±0.1mm 6 - 30mm ±0.2mm 30 - 120mm ±0.3mm ANGLES ±1° NOTICE - These drawings, specifications, or other data (1) are, and remain the property of Amphenol corp. (2) must be returned upon request; and (3) are confidential and not to be disclosed to any person other than those to whom they are given by Amphenol Corp. the furnishing of these drawings, specifications, or other data by Amphenol Corp., or to any other person to anyone for any purpose is not to be regarded by implication or otherwise in any manner licensing, granting rights to permitting such holder or any other person to manufacture, use or sell any product, process or design, patented or otherwise, that may in any way be related to or disclosed by said drawings, specifications, or other data.	MATERIAL	DRAWN S. DUAN	DATE 05-Aug-15	TITLE SMA STR SUB-ASSEMBLY FOR .047" STORM FLEX CABLE SCALE: 9.0:1.0 SHEET 2 OF 2			Amphenol RF Danbury CT USA, Tainan, Taiwan, Shenzhen, China www.amphenolrf.com		
	REFERENCE EAR # 3525	ENGINEER A ARUN PRABU	DATE 12-May-09						
	CONFIGURATION LEVEL: In Work	APPROVED S. HSIEH	DATE 12-Jan-18	ITEM NO. 901-10288					
	FINISH	CAD FILE	DWG SIZE B			CODE ID 74868	REV E	PART NO. 901-10288	