

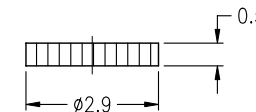
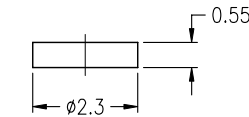
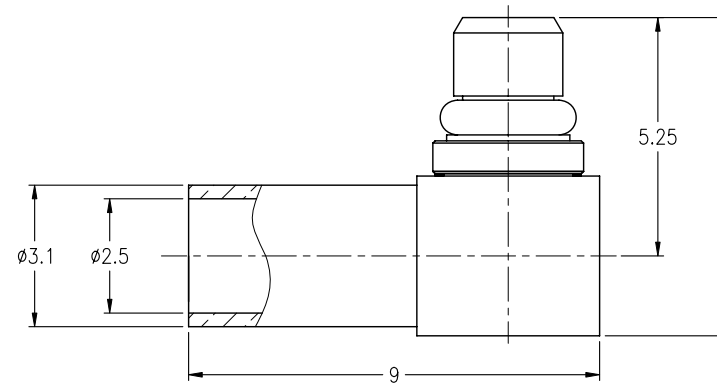
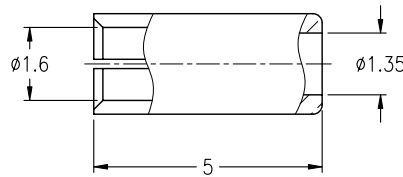
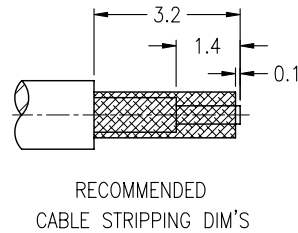
NOTES:

1. MATERIALS AND FINISHES:
 - BODY - BRASS, GOLD PLATING
 - CONTACT - BRASS, GOLD PLATING
 - INSULATOR - PTFE, NATURAL
2. ELECTRICAL:
 - A. IMPEDANCE: 50 OHM
 - B. FREQUENCY RANGE: DC 0-6 GHz
 - C. DIELECTRIC WITHSTANDING VOLTAGE: 500 VRMS, MIN.
3. MECHANICAL:
 - A. DURABILITY: 500 CYCLES MIN.
 - B. TEMPERATURE RANGE: -65°C to +165°C
4. ASSEMBLY
 - A. STRIP CABLE TO DIMENSION SHOWN
 - B. INSERT THROUGH FERRULE, AND PEEL CABLE BRAID BACK, OVER FERRULE
 - C. INSERT CABLE INTO CONNECTOR UNIT IT BOTTOM, AND THEN SOLDER CABLE CENTER CONDUCTOR TO CONTACT.
 - D. CRIMP HOUSING OVER FERRULE USING W/.105" HEX
 - E. INSERT INSULATOR, AND THEN PRESS COVER INTO HOUSING

THIRD ANGLE PROJ.

REVISIONS

| REV | DESCRIPTION | DATE | ECO | APPR |
|-----|---------------------------------------|-----------|-------|--------|
| A | RELEASE TO MFG. | 06-Jan-00 | 44246 | MARK.C |
| B | SEE SHEET 1. | 14-Jun-00 | 44415 | TONY |
| C | SEE SHEET 1. | 23-Oct-01 | -- | TONY |
| C1 | SEE SHEET 1. | 04-Jan-02 | -- | TONY |
| C2 | SEE SHEET 1. | 15-Nov-02 | -- | TONY |
| D | SEE SHEET 1. | 06-Jan-03 | -- | TONY |
| E | REDRAWN TO UPDATE FORMAT | 09-Dec-08 | 47064 | SH |
| F | THE BODY AND SPRING RING WERE CHANGED | 08-Apr-11 | 48431 | DH |



CUSTOMER OUTLINE DRAWING

ALL OTHER SHEETS ARE FOR INTERNAL USE ONLY

| | | | | | |
|--|-----------|--|----------------------------|--|--------------------|
| UNLESS OTHERWISE SPECIFIED, DIMENSIONS ARE IN METRIC AND TOLERANCES ARE: <0.5mm ±0.05mm 0.5 - 6mm ±0.1mm 6 - 30mm ±0.2mm 30 - 120mm ±0.3mm ANGLES ±1° | MATERIAL | DRAWN M.ZHANG DATE 31-Mar-11 | TITLE | Amphenol RF Danbury CT USA, Tainan Taiwan, Shenzhen China www.amphenolrf.com | |
| | REFERENCE | ENGINEER C.WANG DATE 06-Jan-03 | MMCX R/A CRIMP PLUG | DRAWING NO. MMCX1112A3-N/3GT30G-0.8DV-50 | |
| | FINISH | APPROVED D.HU DATE 08-Apr-11 | SCALE: 6/1 SHEET 2 OF 2 | ITEM NO. 091112AAE08NP5F | |
| | | CAD FILE F:\DWG\MMCX\1112A3\0.8DV-50\N.3GT30G-FSZ | DWG SIZE B | REV F | PART NO. 908-43000 |