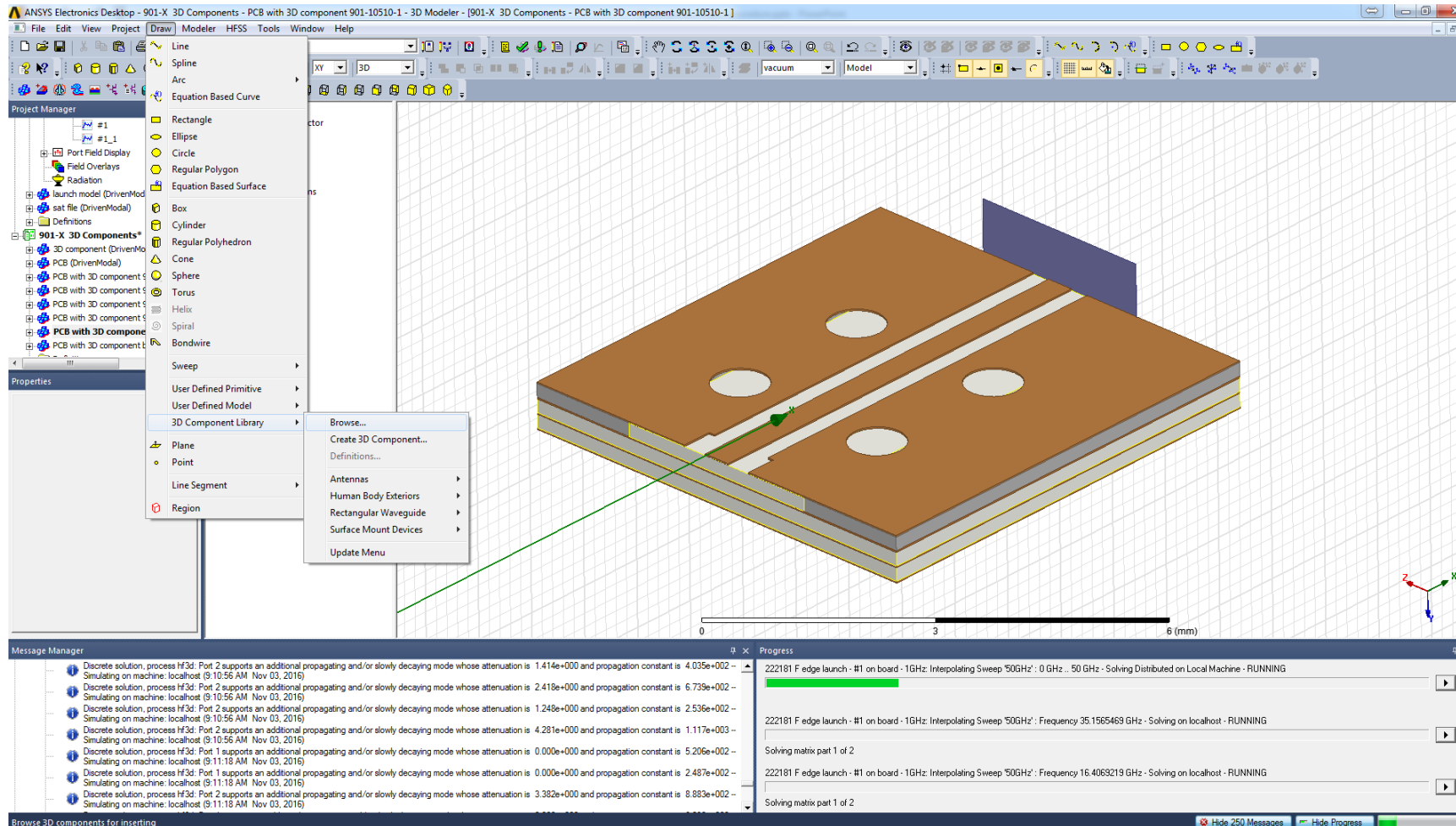


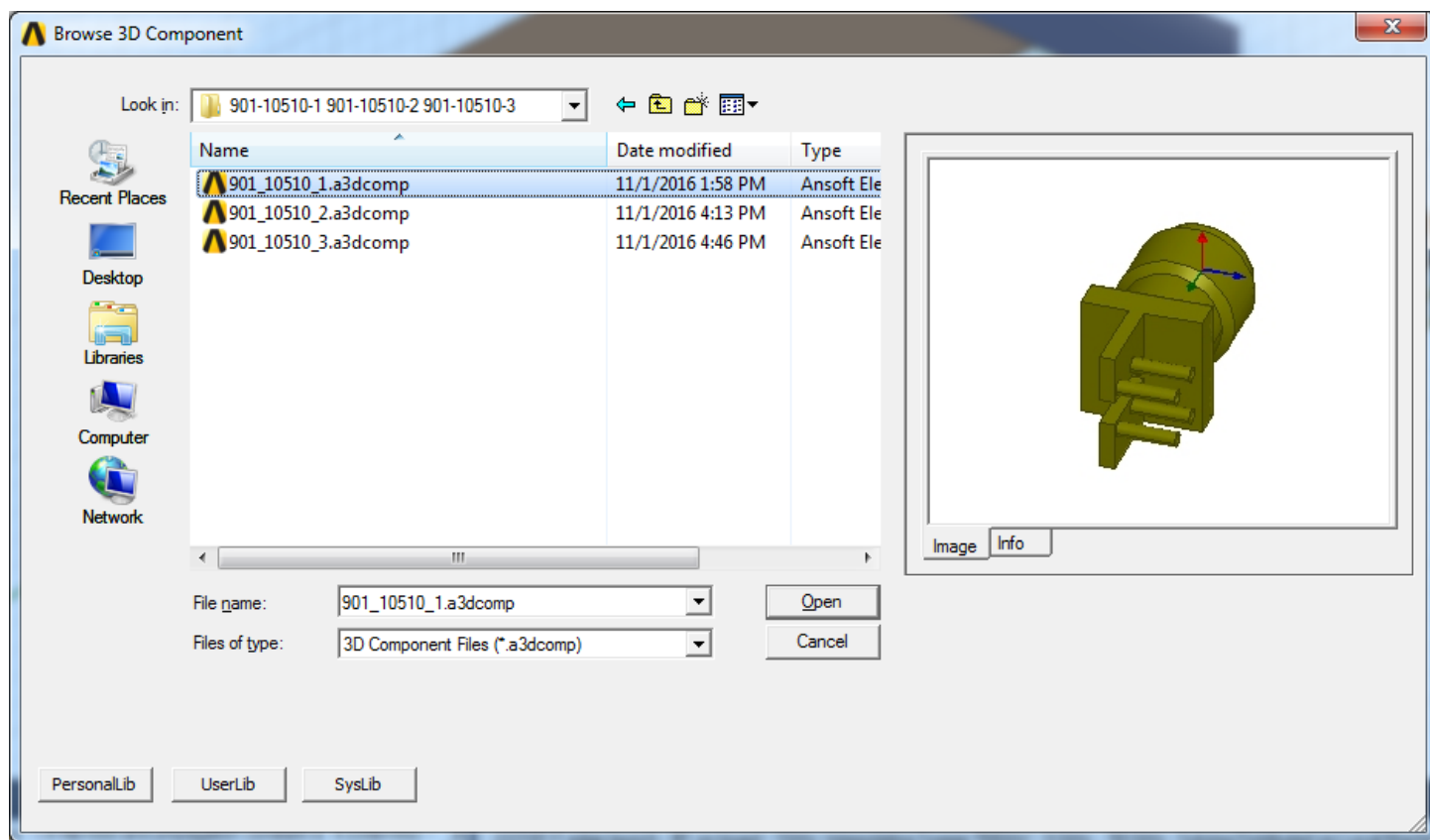
# Importing a 3D Component onto a PCB Launch Model

6/24/2022

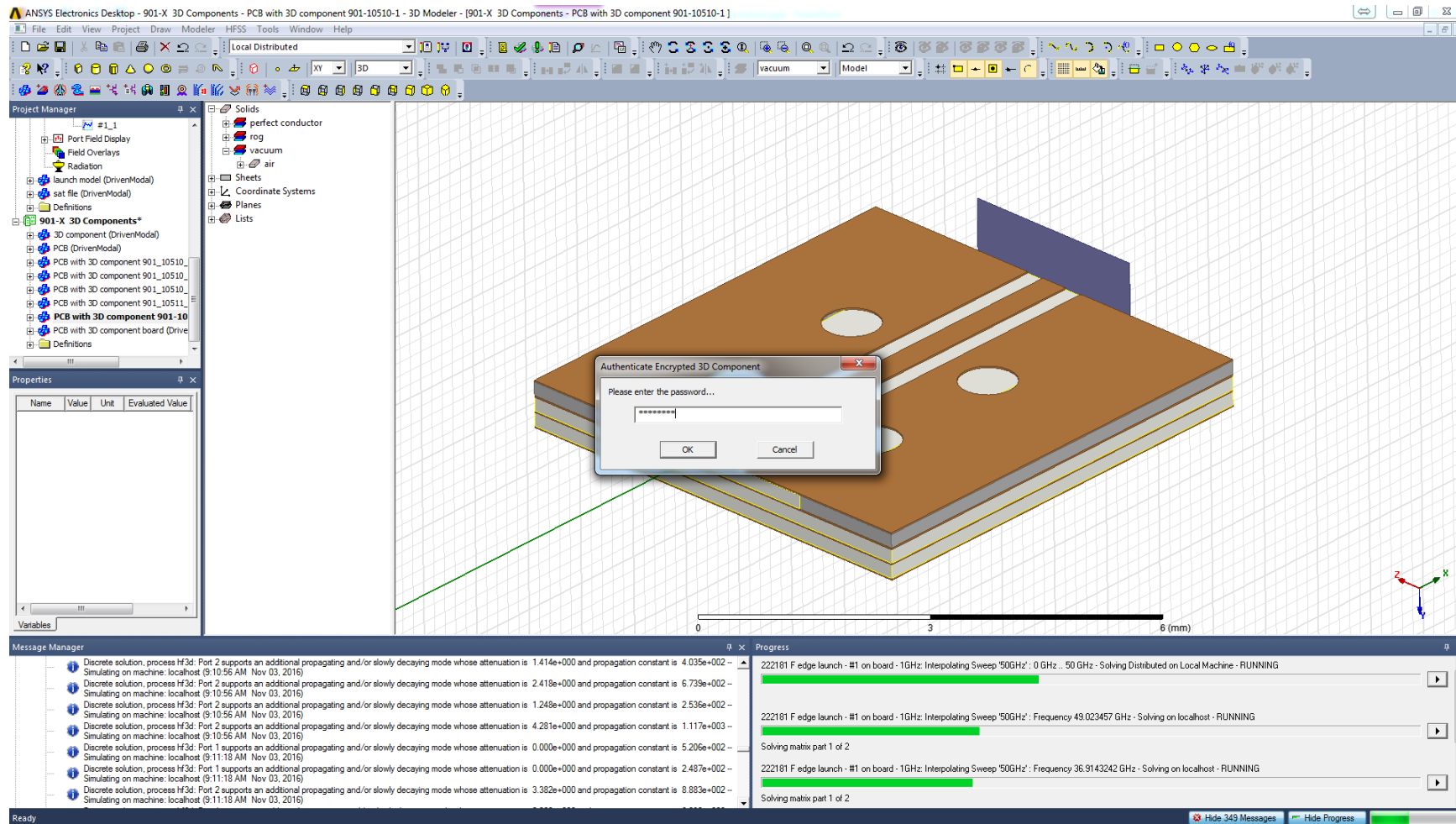
- Please note, you must be using the latest version of ANSYS HFSS software to ensure compatibility with all 3D component models.
- To avoid ACIS errors, unit of measurement should be set to mm



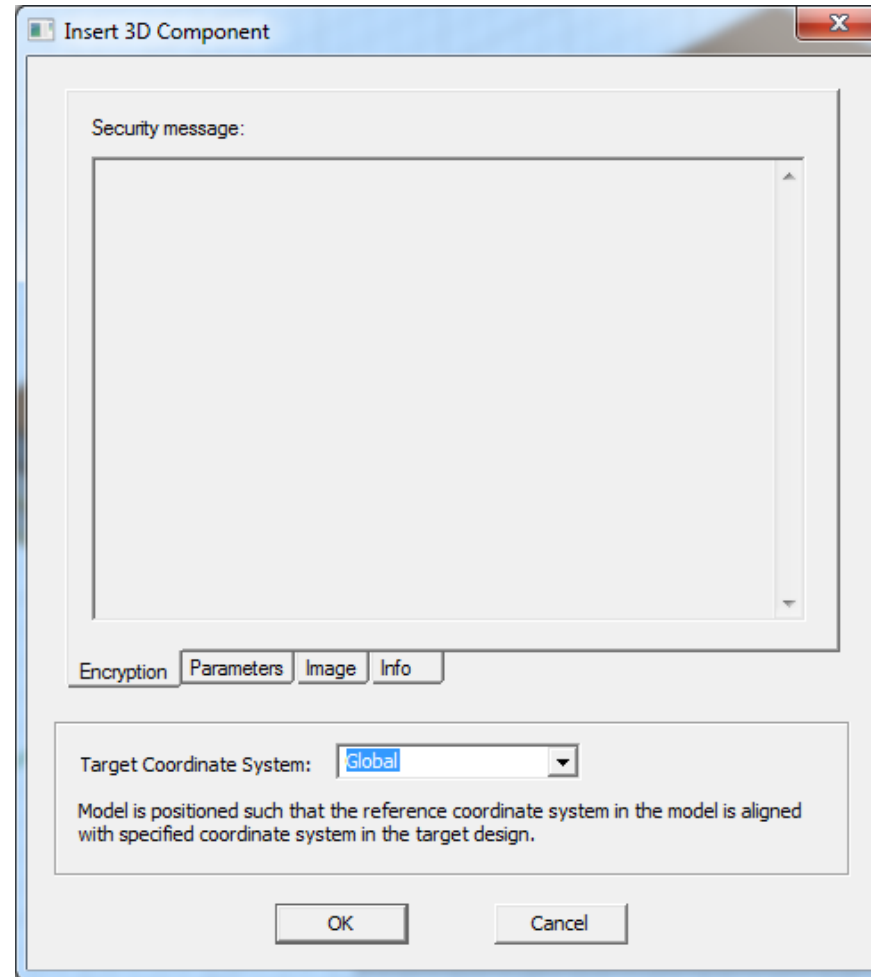
In HFSS, go to Draw>3D Component Library>Browse



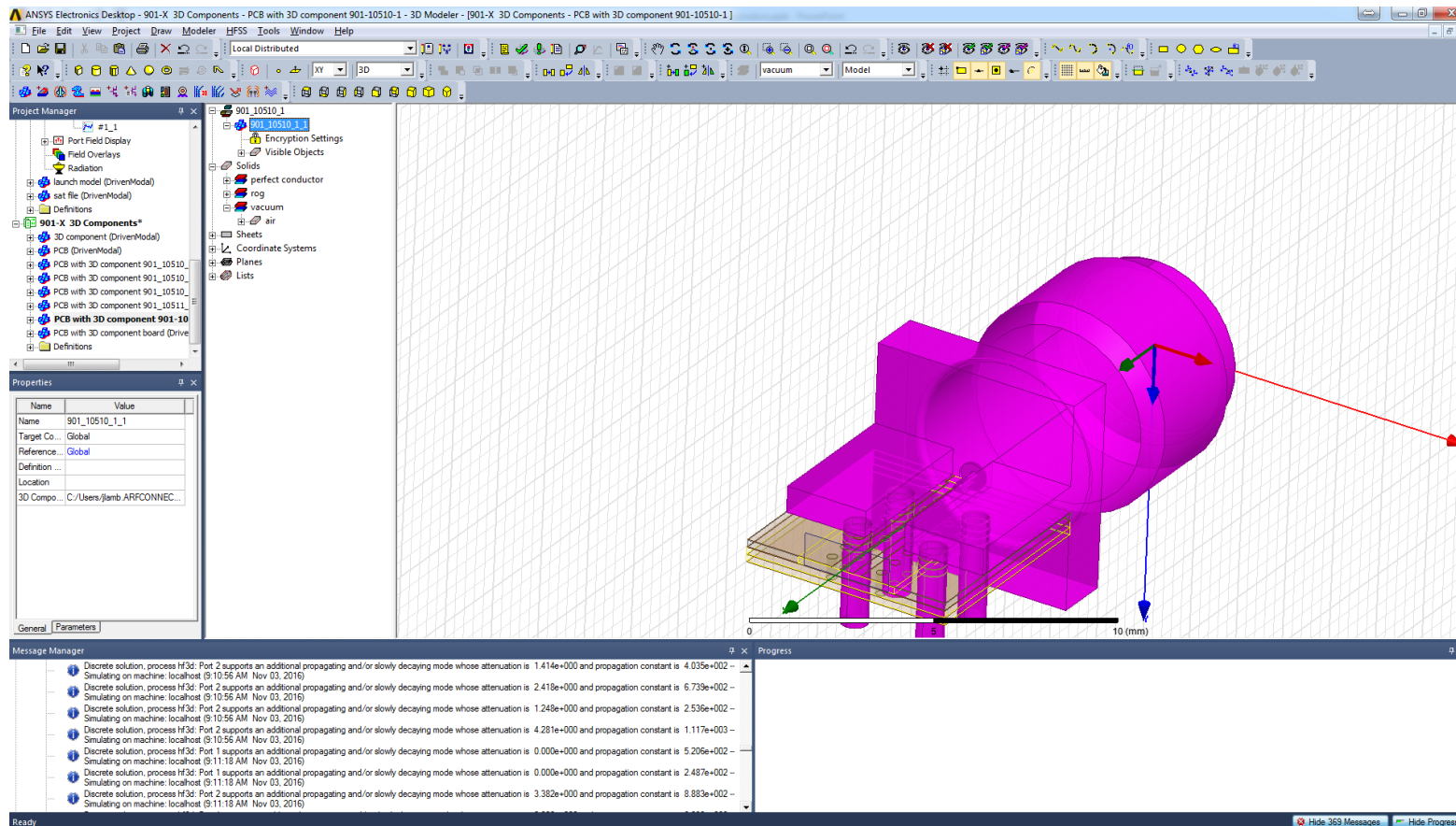
Import the 3D component for the connector



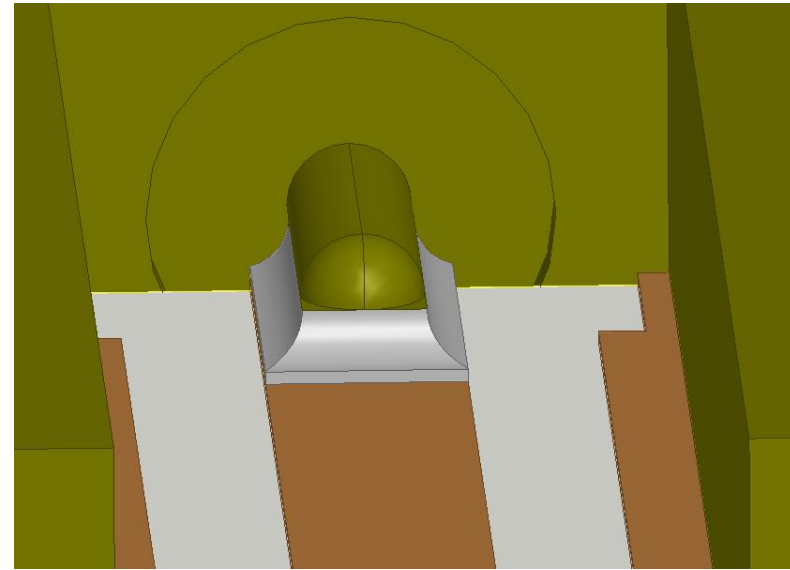
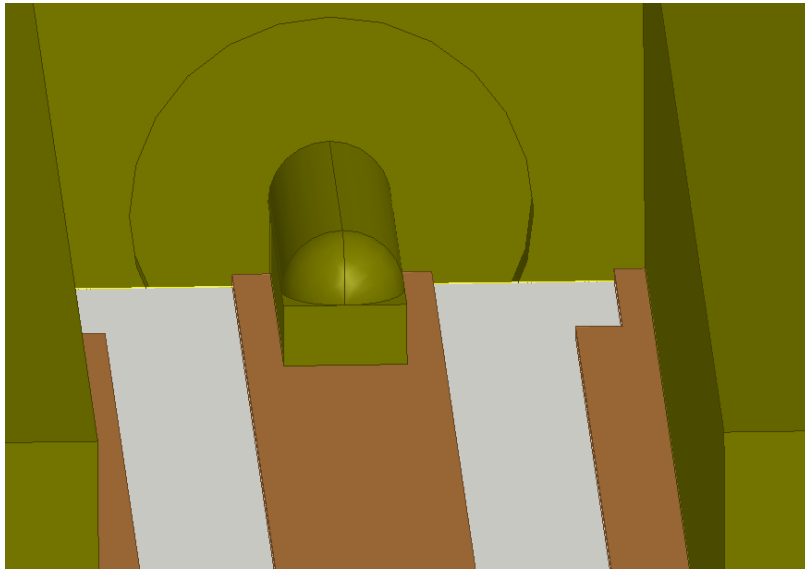
Enter the password “amphenol” and click ‘OK’



Click 'OK'

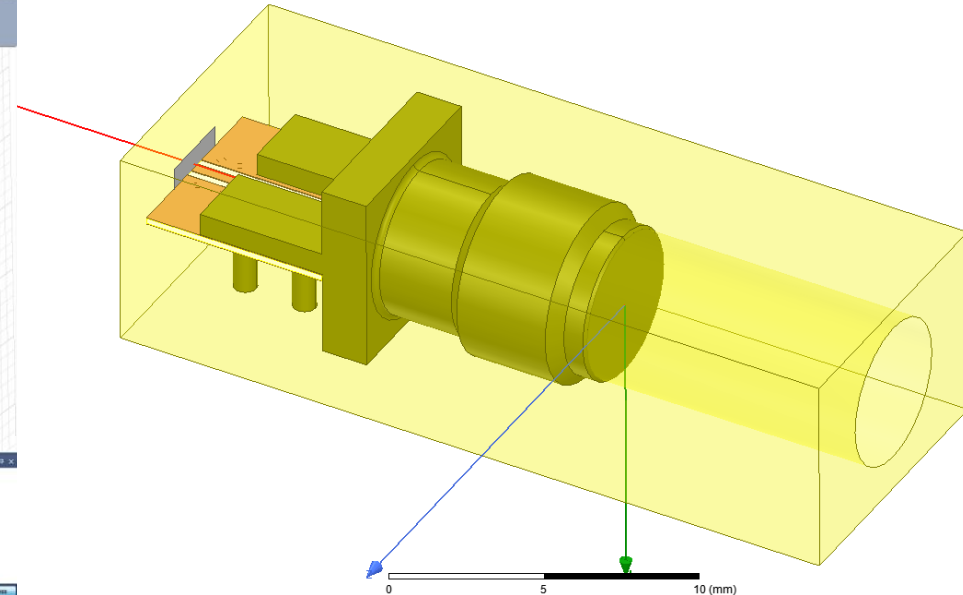
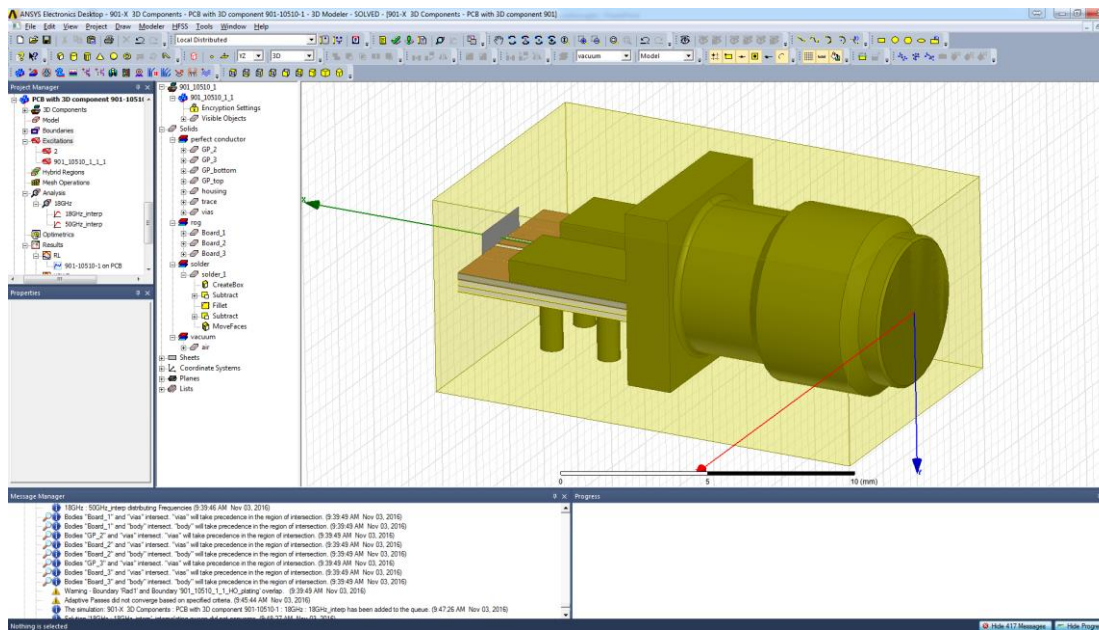


Select the entire component via the side menu and position the component on the launch model so that it is flush with the top of the board. Ensure that no objects are interfering with the component, or enable materials override in the HFSS design settings. Note that although the internal geometry is hidden, it will still simulate as normal.

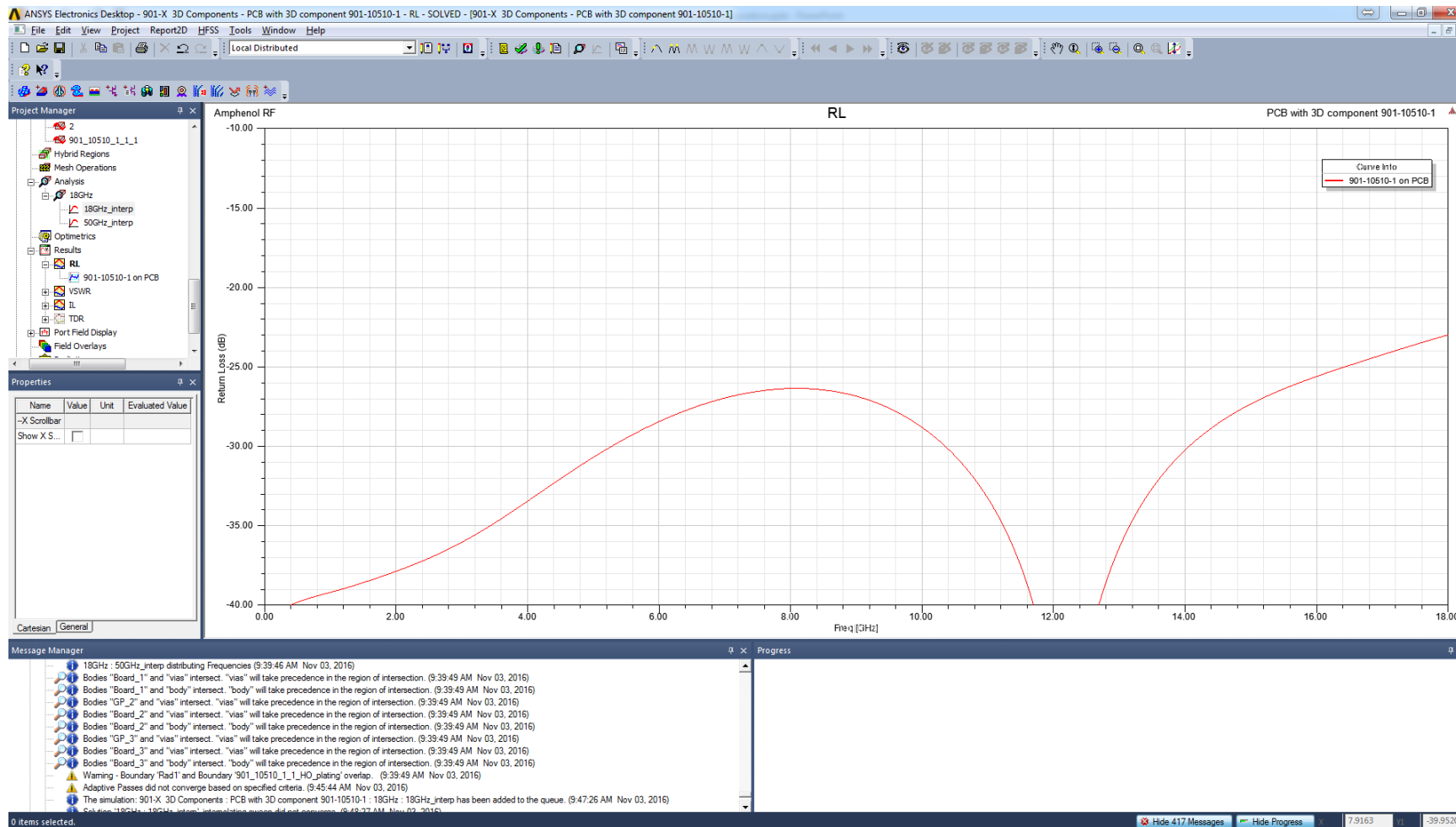


In some cases, a small amount of solder is already modeled on the center pin, but if an accurate solder model is needed, solder can be modeled on the pad around the center pin as desired. Solder will also need to be modeled around the ground pins of the connector.





The mated connector interface and input wave port are already modeled internal to the 3D component. Because of this, the front face of the connector must be against the edge of the air box or a perfect conductor. From there, model a board-side port object and analysis setup can be performed as normal.



The simulation can then be run as normal, and the PCB launch can be optimized for best performance with the connector.

For further information, please contact  
Amphenol RF:

Amphenol RF Headquarters  
4 Old Newtown Road  
Danbury, CT 06810 USA

- Toll Free: (800) 627-7100
- Direct: (203) 743-9272