

Enhanced Automotive Connector System

AUTOMATE® MINI-FAKRA TYPE A FEATURES & BENEFITS



REDUCES INSTALLATION SPACE

AUTOMATE connectors feature a multi-port design that reduces installation space requirements by up to 80% compared with traditional FAKRA

ENABLES 20 GBPS DATA RATES

AUTOMATE Type A PCB connectors support frequencies up to 9 GHz. Cable connectors support 15 GHz ensuring plenty of bandwidth for next generation applications.



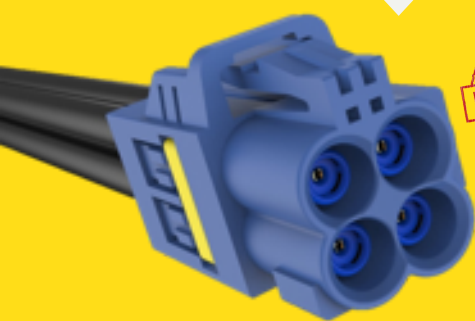
KEY CODE CHART							
Keying							
Code	A	B	C	D	E	F	Z
Color	Jet Black	Cream	Signal Blue	Claret Violet	Leaf Green	Nut Brown	Water Blue

MECHANICALLY & VISUALLY KEYED

Mechanically keyed and color-coded housings helps to eliminate installation errors and prevent mis-mating. Seven key codes are available. The Z key code is universal and will mate with all other key codes.

MODULAR MULTI-PORT DESIGN

Connectors can be produced in a variety of configurations including quad, dual and single port PCB and cable mount options.

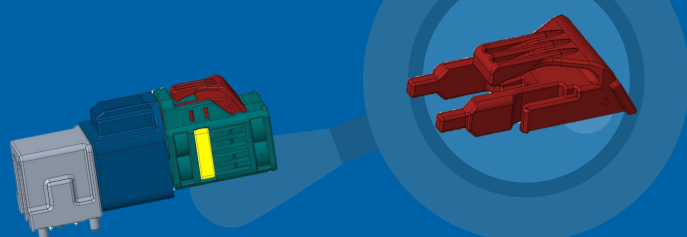


CLOSED ENTRY CABLE INTERFACE

A closed entry cable interface limits the size of mating parts to prevent contact damage when mating.

CONNECTOR POSITION ASSURANCE (CPA)

The CPA function is an optional feature designed to prevent accidental disengagement with the mating connector by preventing the latch from being actuated.



TERMINAL POSITION ASSURANCE (TPA)

The secondary locking feature utilizes a clip that slides into the side of the housing to ensure the body sub-assembly and contact are retained and fully seated within the housing.



LOW ENGAGEMENT FORCES

AUTOMATE has low engagement and disengagement forces ensuring easy installation and secure mating.

≤ 50N ENGAGEMENT
≥ 5N DISENGAGEMENT

COST CONSCIOUS DESIGN

AUTOMATE was designed with high volume production in mind. PCB connectors are pre-assembled and utilize tape and reel packaging for convenient pick and place automated assembly onto the PCB.

SUPPORTS POPULAR COAXIAL CABLES

AUTOMATE Type A cable mount connectors are designed to accommodate industry standard cables including TFC-302LL and equivalent, along with RG-174 and RG-316 cables.



Visit www.amphenolrf.com/automate for more information and resources.