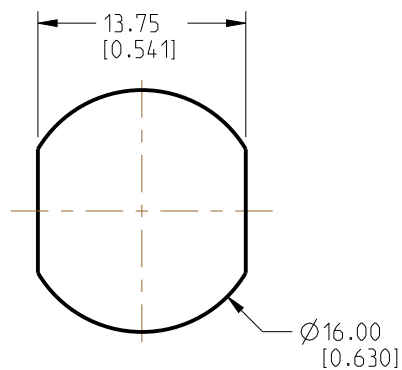


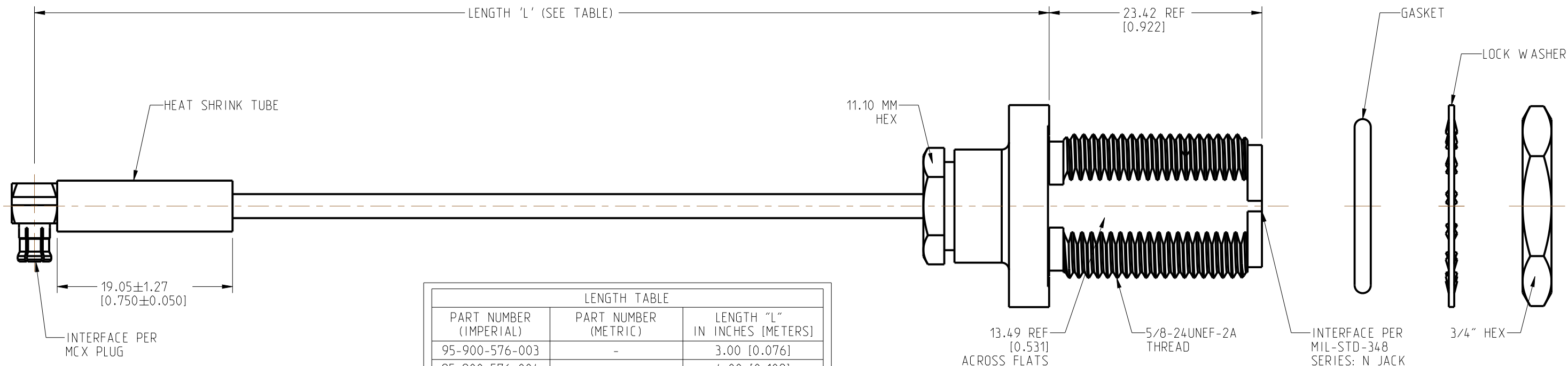
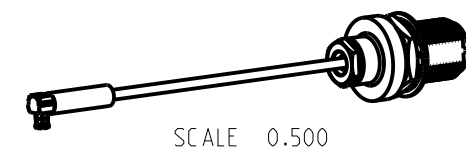
NOTES:

1. MATERIALS AND FINISHES:
 MCX RA PLUG - BeCu, GOLD PLATING
 N STR BHD JACK IP 67 - BRASS, NICKEL PLATING
 CABLE - RG 316
2. ELECTRICAL:
 A. IMPEDANCE: 50 OHM
3. PACKAGING:
 A. QUANTITY: SINGLE PACK
 B. MARKING: BAG TO BE MARKED
 "AMPHENOL RF, 95-900-596-XXX AND DATE CODE"



RECOMMENDED MOUNTING HOLE DIMENSIONS

REVISIONS				
REV	DESCRIPTION	DATE	ECN	BY
A	RELEASE TO MFG.	12-DEC-25	17683	AMP
B	CABLE RG 316 WAS RG 174 IN TITLE BLOCK AND NOTES	20-MAY-26	17904	AMP



LENGTH TABLE		
PART NUMBER (IMPERIAL)	PART NUMBER (METRIC)	LENGTH "L" IN INCHES [METERS]
95-900-576-003	-	3.00 [0.076]
95-900-576-004	-	4.00 [0.102]
95-900-576-005	-	5.00 [0.127]
95-900-576-006	-	6.00 [0.152]
95-900-576-007	-	7.00 [0.178]
95-900-576-008	-	8.00 [0.203]
95-900-576-009	-	9.00 [0.229]
95-900-576-010	-	10.00 [0.254]
95-900-576-011	-	11.00 [0.279]
95-900-576-012	-	12.00 [0.305]
95-900-576-018	-	18.00 [0.457]
95-900-576-024	-	24.00 [0.610]
95-900-576-036	-	36.00 [0.914]
-	95-900-576M100	39.37 [1.000]
95-900-576-048	-	48.00 [1.219]

TOLERANCE TABLE	
LENGTH IN INCHES/FT [METERS]	TOLERANCE
0" - 23.99" [0 - 0.609]	±0.25" [0.006]
24.00" - 59.99" [0.610 - 1.523]	±0.50" [0.013]
5.0' - 24.99' [1.524 - 7.617]	±2.5%
25.0' & UP [7.620 & UP]	±5.0%

DESIGN REQUIREMENTS:

- | | |
|---|--|
| <input checked="" type="checkbox"/> FREQUENCY: DC - 6 GHz | <input checked="" type="checkbox"/> CONTINUITY |
| <input type="checkbox"/> VSWR: _____ 1 MAX. | <input checked="" type="checkbox"/> HI-POT: 700 VRMS |
| <input type="checkbox"/> INS. LOSS: _____ dB MAX. | <input type="checkbox"/> OTHER |

CUSTOMER OUTLINE DRAWING
 ALL OTHER SHEETS ARE FOR INTERNAL USE ONLY

NOTICE: These drawings, specifications, or other data (1) are, and remain the property of Amphenol corp. (2) must be returned upon request; and (3) are confidential and not to be disclosed to any person other than those to whom they are given by Amphenol Corp. The furnishing of these drawings, specifications, or other data by Amphenol Corp., or to any other person to anyone for any purpose is not to be regarded by implication or otherwise in any manner licensing, granting rights to permitting such holder or any other person to manufacture, use or sell any product, process or design, patented or otherwise, that may in any way be related to or disclosed by said drawings, specifications, or other data.		UNLESS OTHERWISE SPECIFIED DIMENSIONS ARE METRIC [INCHES] AND TOLERANCES ARE: <0.5mm = ±0.05mm [$<0.020 = \pm 0.002$] 0.5 - 6mm = ±0.1mm [$>0.020 - 0.236 = \pm 0.004$] >6.00 - 30mm = ±0.2mm [$>0.236 - 1.181 = \pm 0.008$] >30.00 - 120mm = ±0.3mm [$>1.181 - 4.725 = \pm 0.012$]		MATERIAL SEE NOTES		TITLE MCX RA PLUG TO N STR BHD JACK IP 67 USING RG 316 CABLE		Amphenol RF	
THIRD ANGLE PROJ.	REFERENCE	EAR# 13262	ENGR.1 PONNARASAN		ENGR.2	DATE 06-OCT-25	SHEET NO. 2 OF 2	SCALE: 2.3:1.0	SIZE B
							DRAWING NO. 95-900-596-XXX	REV B	
							ITEM NO. 95-900-596-XXX		
							PART NO. 95-900-596-XXX		