

NOTES:

1. MATERIALS AND FINISHES:

BODY, REAR BODY, SLEEVE, INNER FERRULE,
 HEX NUT & LOCK WASHER - BRASS, NICKEL PLATING
 CONTACT - BeCu, GOLD PLATING
 INSULATOR - PTFE, NATURAL
 INSULATOR DISC - ULTEM, NATURAL

2. ELECTRICAL:

A. IMPEDANCE: 50 OHM
 B. FREQUENCY RANGE: DC - 6 GHz
 C. VSWR : 1.30 MAX. @ DC - 3 GHz
 1.40 MAX. @ 3 - 6 GHz
 D. DIELECTRIC WITHSTANDING VOLTAGE: 500 VRMS. MIN.

3. MECHANICAL:

A. DURABILITY: 500 CYCLES MIN.
 B. TEMPERATURE RANGE: -40°C TO +90°C

4. PACKAGING:

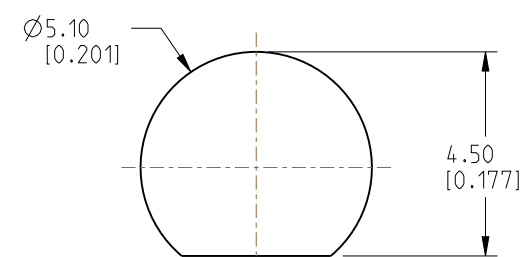
A. QUANTITY: SINGLE PACK
 B. MARKING: PACKAGING TO BE MARKED
 "AMPHENOL RF, 908-50130 & DATE CODE"
 C. HEX NUT, LOCK WASHER, CONTACT, INSULATOR DISC, SLEEVE AND INNER FERRULE
 ARE PACKAGED LOOSE.

5. CABLE ASSEMBLY INSTRUCTIONS:

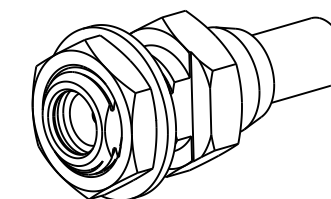
A. TRIM CABLE AS SHOWN (TWO STAGE TRIM).
 B. INSERT CABLE THROUGH INNER FERRULE AND PEEL BRAID BACK,
 OVER INNER FERRULE.
 C. INSTALL SLEEVE AND INSULATOR DISC OVER CABLE,
 BOTTOMING ON INNER FERRULE.
 D. SOLDER CONTACT TO CABLE CENTER CONDUCTOR,
 BOTTOMING ON INSULATOR DISC.
 E. INSERT CABLE INTO CONNECTOR UNTIL IT BOTTOMS.
 F. CRIMP BODY OVER INNER FERRULE USING .105" HEX.

6. SHOWS CABLE ENTRY DIMENSIONS.

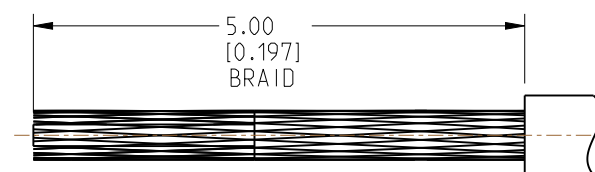
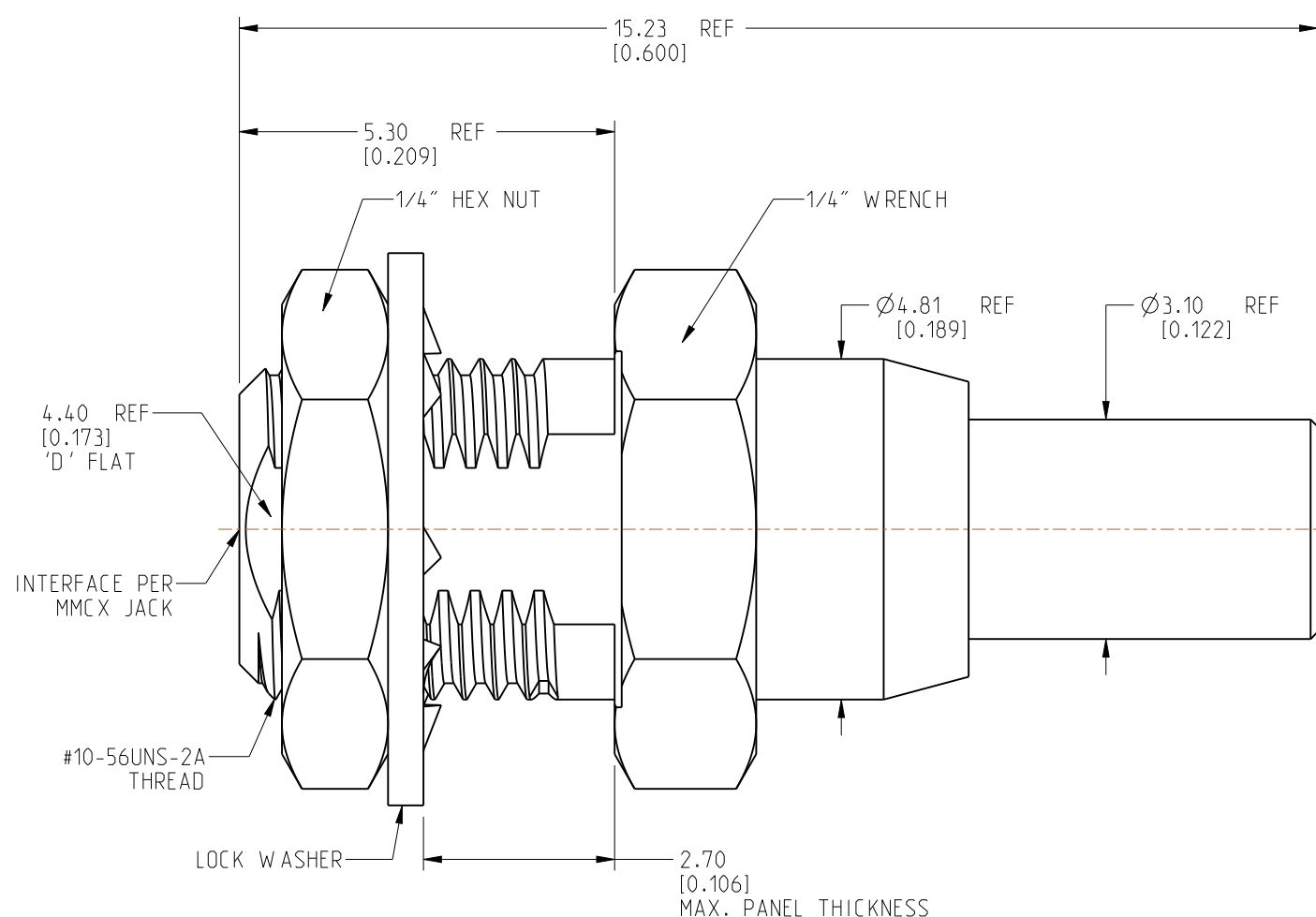
REVISIONS				
REV	DESCRIPTION	DATE	ECN	BY
A	RELEASE TO MFG.	22-DEC-25	17696	LEO



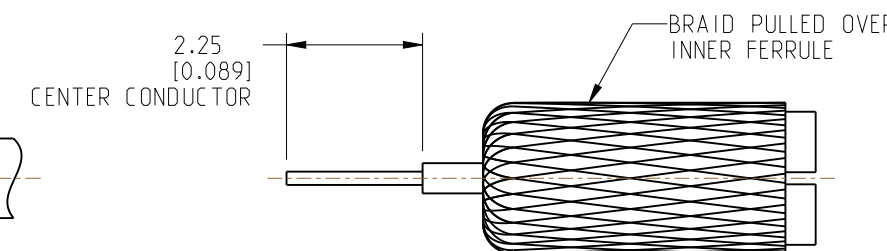
RECOMMENDED MOUNTING HOLE DIMENSIONS



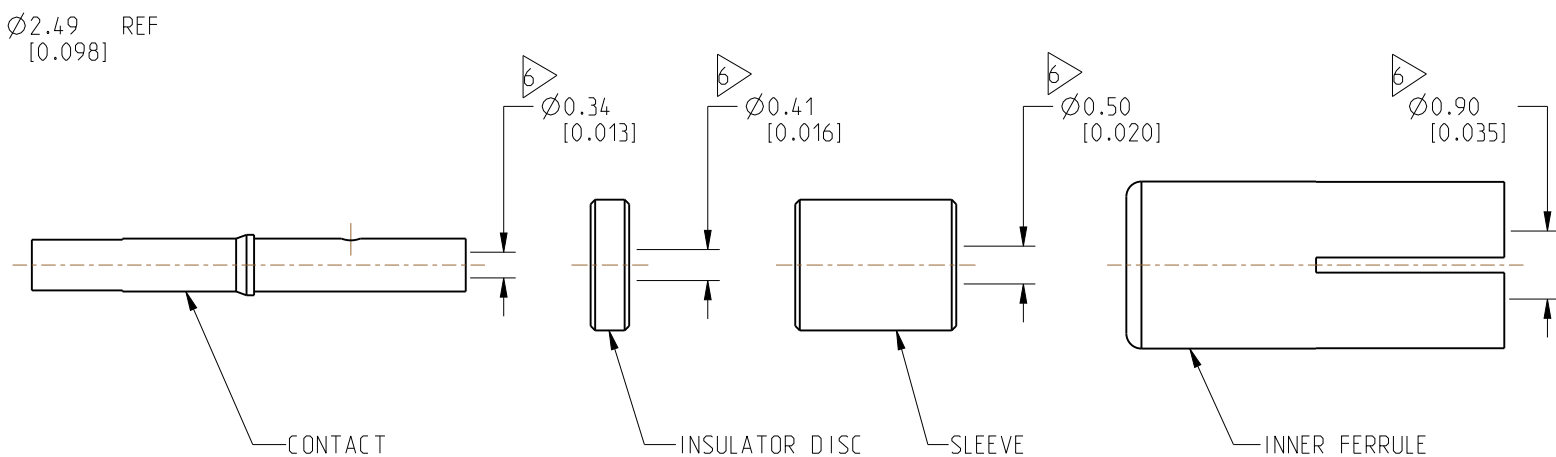
SCALE 3.000



RECOMMENDED CABLE STRIPPING DIMENSIONS (TRIM 1)



RECOMMENDED CABLE STRIPPING DIMENSIONS (TRIM 2)



CUSTOMER OUTLINE DRAWING
 ALL OTHER SHEETS ARE FOR INTERNAL USE ONLY

NOTICE: These drawings, specifications, or other data (1) are, and remain the property of Amphenol corp. (2) must be returned upon request; and (3) are confidential and not to be disclosed to any person other than those to whom they are given by Amphenol Corp. The furnishing of these drawings, specifications, or other data by Amphenol Corp., or to any other person to anyone for any purpose is not to be regarded by implication or otherwise in any manner licensing, granting rights to permitting such holder or any other person to manufacture, use or sell any product, process or design, patented or otherwise, that may in any way be related to or disclosed by said drawings, specifications, or other data.

UNLESS OTHERWISE SPECIFIED DIMENSIONS ARE METRIC (INCHES) AND TOLERANCES ARE:
 <0.5mm = ±0.05mm [$<0.020 = \pm 0.002$]
 0.5 - 6mm = ±0.1mm [$>0.020 - 0.236 = \pm 0.004$]
 >6.00 - 30mm = ±0.2mm [$>0.236 - 1.181 = \pm 0.008$]
 >30.00 - 120mm = ±0.3mm [$>1.181 - 4.725 = \pm 0.012$]

MATERIAL: SEE NOTES
 ENGR.1: SURESH
 ENGR.2: JACK LIANG
 DATE: 04-JUL-25

TITLE: MMCX STR BHD JACK FOR 0.81 MM CABLE
 SHEET NO. 2 OF 2
 SCALE: 10.0:1.0

Amphenol RF
 DRAWING NO. 908-50130
 ITEM NO. 908-50130
 PART NO. 908-50130
 REV: A

THIRD ANGLE PROJ.

REFERENCE: EAR# 10278

ANGLES = ±1°

ENGR.1: SURESH
 ENGR.2: JACK LIANG
 DATE: 04-JUL-25

SHEET NO. 2 OF 2
 SCALE: 10.0:1.0

REV: A