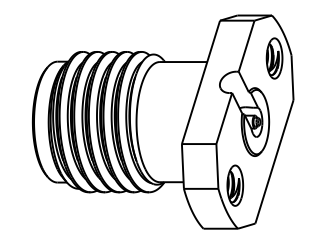
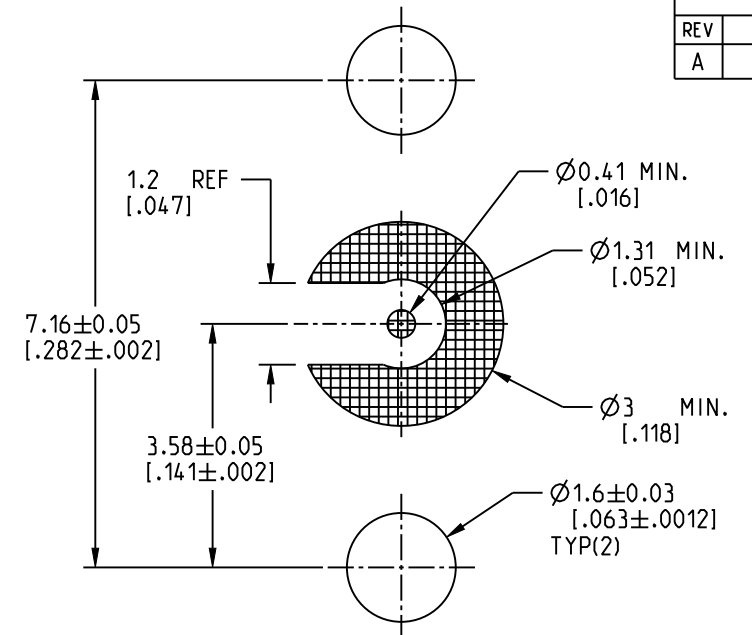


NOTES:

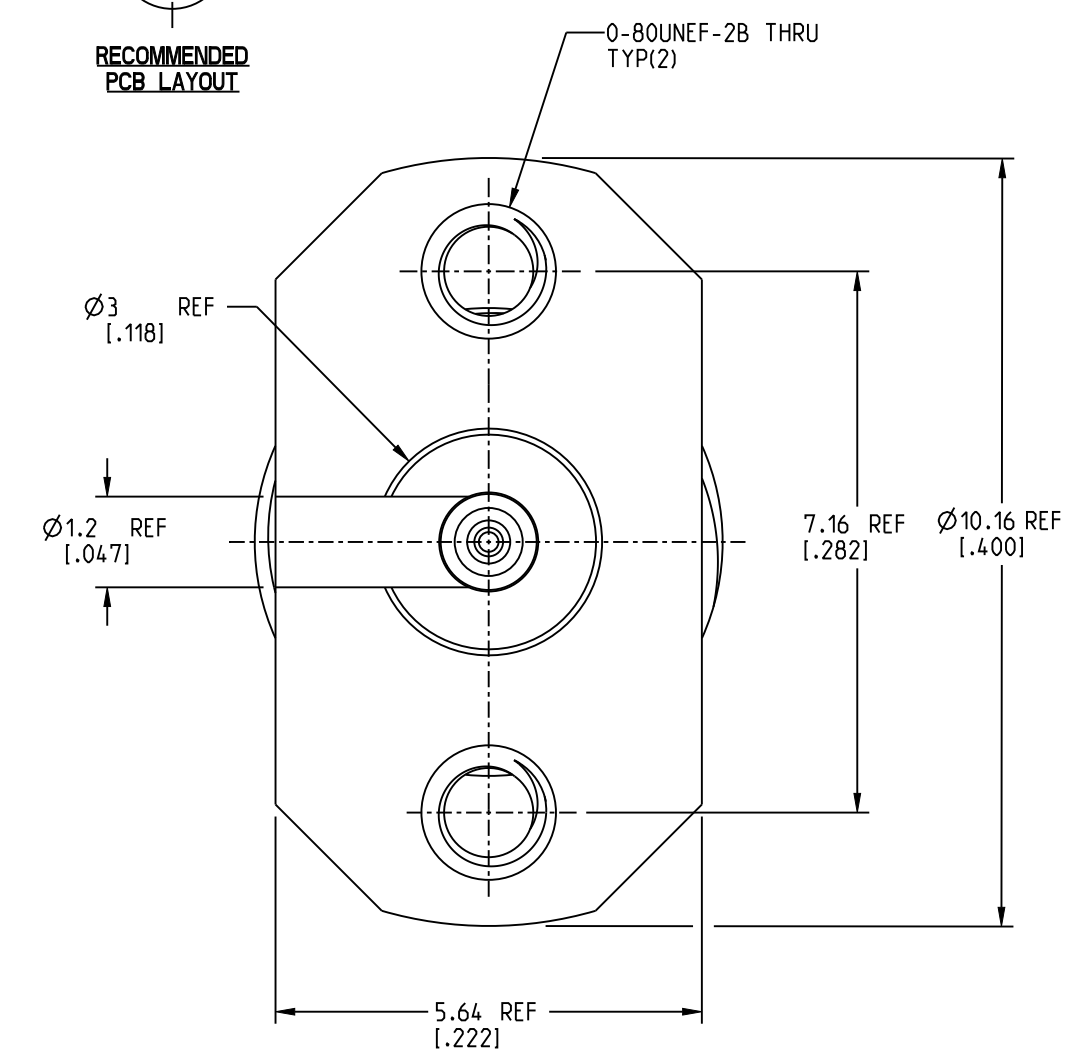
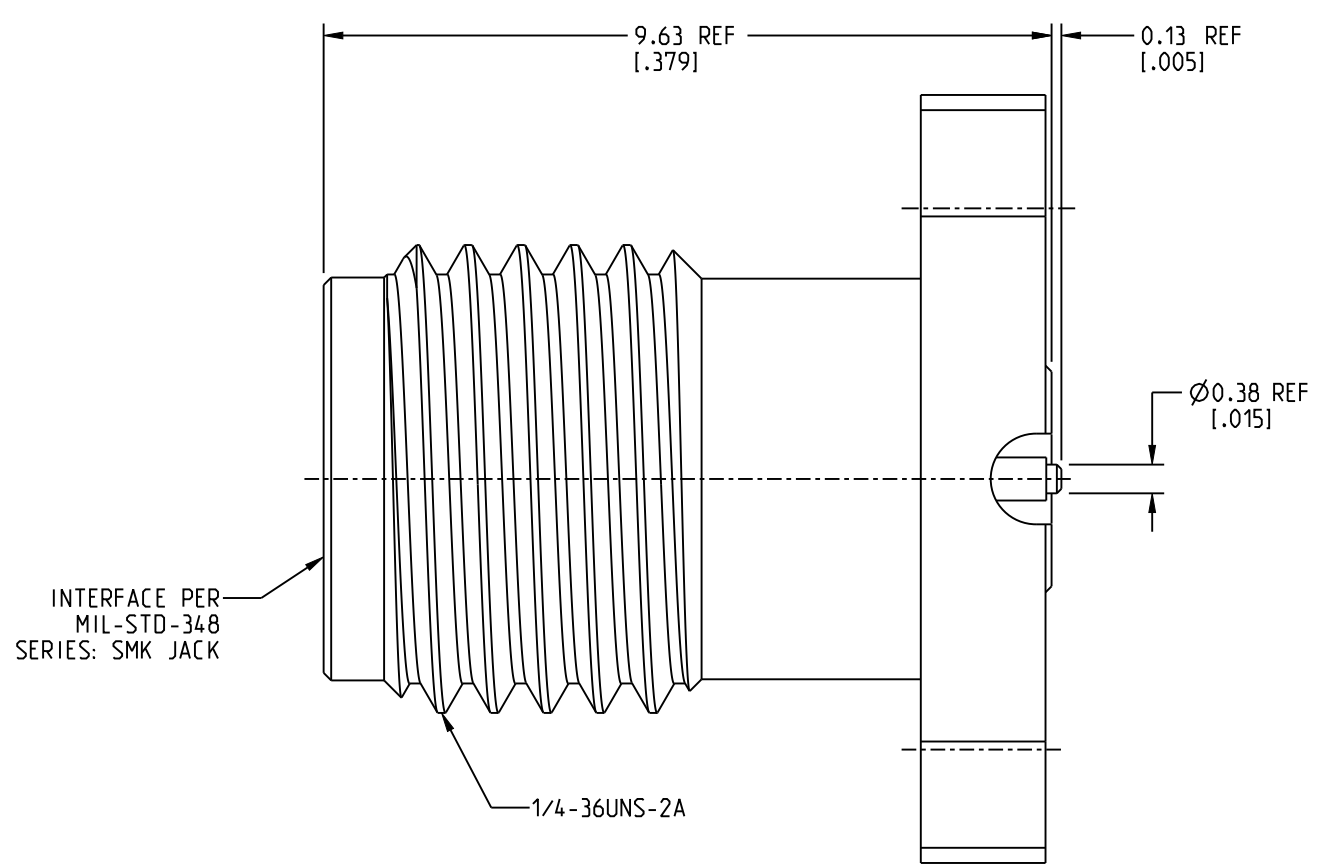
- 1. MATERIALS AND FINISHES:
 BODY & REAR BODY - STAINLESS STEEL, PASSIVATED
 CONTACT - BeCu, GOLD PLATING
 INSULATOR - ULTEM-1000, NATURAL
 CONNECTOR IS PFAS FREE
- 2. ELECTRICAL:
 A. IMPEDANCE: 50 OHM
 B. FREQUENCY RANGE: DC-40 GHz
 C. VSWR (RETURN LOSS): 1.20 : 1 @ DC - 26.5 GHz MAX.
 1.45 : 1 @ 26.5 - 40 GHz MAX.
 D. DIELECTRIC WITHSTANDING VOLTAGE: 600 VRMS, MIN.
 E. ELECTRICAL SPECS STATED ARE INDEPENDANT OF PCB DESIGN.
- 3. MECHANICAL:
 A. DURABILITY: 500 CYCLES MIN.
 B. TEMPERATURE RANGE: -65°C TO +85°C
- 4. PACKAGING:
 A. QUANTITY: SINGLE PACK
 B. MARKING: PACKAGING TO BE MARKED
 "AMPHENOL RF, 292-108J-52S, AND DATE CODE"

| REVISIONS | | | | |
|-----------|-----------------|-----------|-------|-----|
| REV | DESCRIPTION | DATE | ECN | BY |
| A | RELEASE TO MFG. | 09-MAR-26 | 17851 | LEO |



SCALE 3.000

RECOMMENDED PCB LAYOUT



CUSTOMER OUTLINE DRAWING

ALL OTHER SHEETS ARE FOR INTERNAL USE ONLY

NOTICE: These drawings, specifications, or other data (1) are, and remain the property of Amphenol corp. (2) must be returned upon request; and (3) are confidential and not to be disclosed to any person other than those to whom they are given by Amphenol Corp. The furnishing of these drawings, specifications, or other data by Amphenol Corp., or to any other person to anyone for any purpose is not to be regarded by implication or otherwise in any manner licensing, granting rights to permitting such holder or any other person to manufacture, use or sell any product, process or design, patented or otherwise, that may in any way be related to or disclosed by said drawings, specifications, or other data.

UNLESS OTHERWISE SPECIFIED DIMENSIONS ARE METRIC (INCHES) AND TOLERANCES ARE:
 <0.5mm = ±0.05mm [-0.020 = ±0.002]
 0.5 - 6mm = ±0.1mm [-0.020 - 0.236 = ±0.004]
 >6.00 - 30mm = ±0.2mm [-0.236 - 1.181 = ±0.008]
 >30.00 - 120mm = ±0.3mm [-1.181 - 4.725 = ±0.012]

ANGLES = ±1°

MATERIAL: SEE NOTES

TITLE: 2.92 STR JACK TO PCB SOLDERLESS MICROSTRIP 0-80 THREAD

ENGR.1: L. PARENTE ENGR.2: JACK LIANG DATE: 24-FEB-25

SHEET NO. 2 OF 2 SCALE: 10.0:1.0

| | | |
|---------|--------------------------|--------|
| SIZE: B | DRAWING NO. 292-108J-52S | REV: A |
| | ITEM NO. 292-108J-52S | |
| | PART NO. 292-108J-52S | |



THIRD ANGLE PROJ.

REFERENCE: SMA6551P1-008-SXPT30G-50

EAR#: 12747