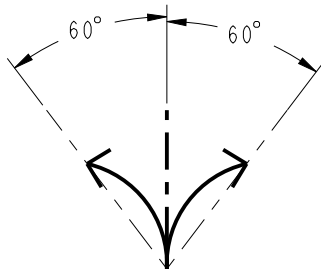
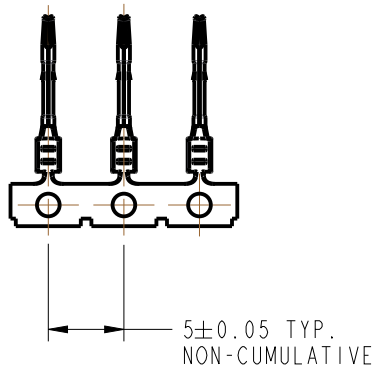
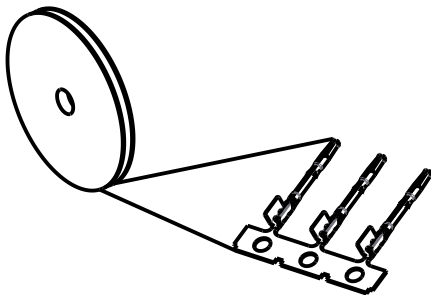


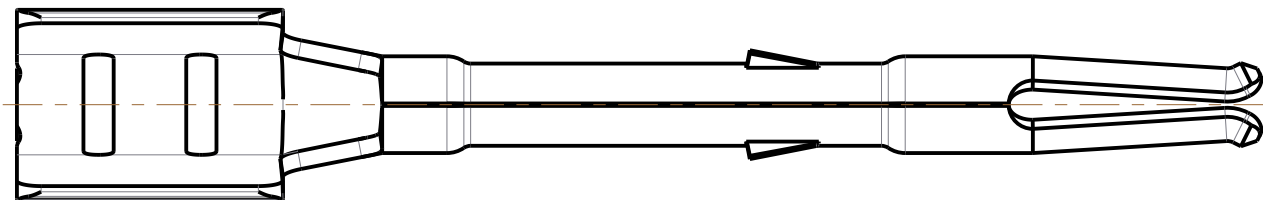
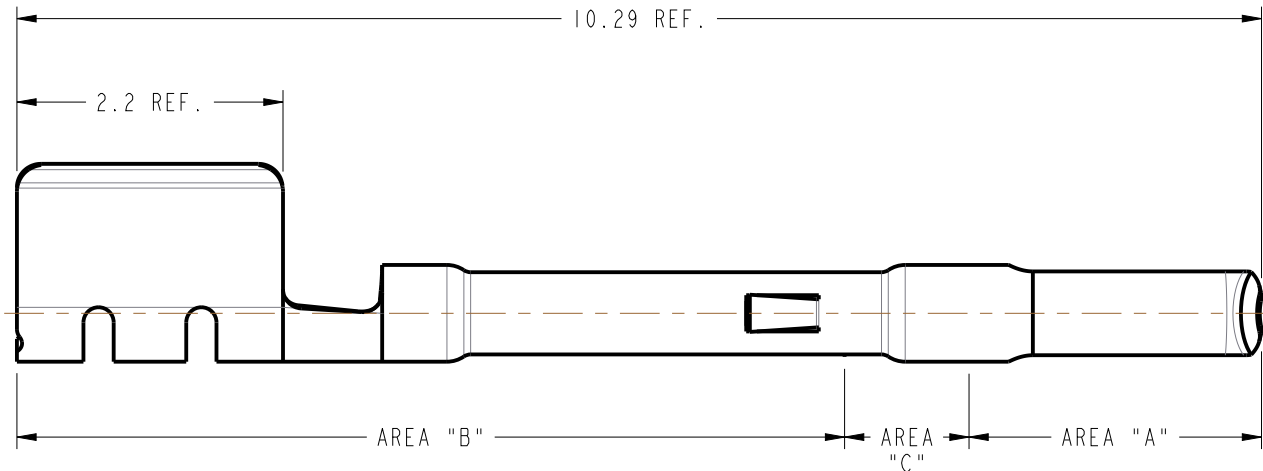
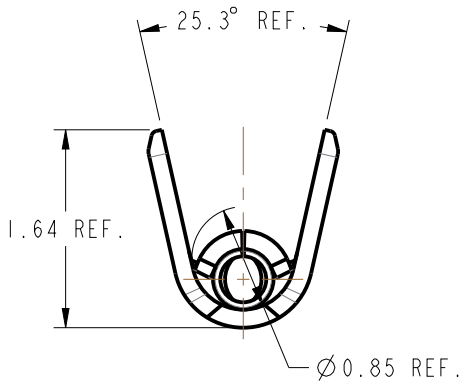
NOTES:

1. FINISHES:  
(PLATING THICKNESS IN MICRO-INCHES)  
AREA "A":  
GOLD PL. 30 MIN. THICK OVER NICKEL PL. 100 MIN. THICK  
AREA "B":  
MATTE TIN PL. 100 MIN. THICK OVER NICKEL PL. 100 MIN. THICK  
AREA "C":  
NICKEL PL. 100 MIN. THICK
2. CONTACT CAN BE BROKEN OFF FROM CARRIER BY 1 CYCLE OF 60° UPWARD BENDING AND 60° DOWNWARD BENDING IN THE DIRECTION OF INSTRUCTION.
3. CONTACTS TO BE SUPPLIED ON REELS (5,000 PCS./ REEL)
4. CONTACTS TO WOUND ON REEL IN DIRECTION AND POSITION SHOWN.

REVISIONS				
REV	DESCRIPTION	DATE	ECN	APPR
A	RELEASE TO MFG.	23-NOV-20	15436	SH
B	SYNC WITH NA	09-DEC-20	15447	KCE



BREAK OFF  
DIRECTION  
SEE NOTE 2



**CONFIGURATION CONTROL:**  
NO CHANGES PERMITTED TO DRAWING WITHOUT  
PPAP QUALIFIED CUSTOMER APPROVAL

**CUSTOMER OUTLINE DRAWING**  
ALL OTHER SHEETS ARE FOR INTERNAL USE ONLY

NOTICE: These drawings, specifications, or other data (1) are, and remain the property of Amphenol corp. (2) must be returned upon request; and (3) are confidential and not to be disclosed to any person other than those to whom they are given by Amphenol Corp. The furnishing of these drawings, specifications, or other data by Amphenol Corp., or to any other person to anyone for any purpose is not to be regarded by implication or otherwise in any manner licensing, granting rights to permitting such holder or any other person to manufacture, use or sell any product, process or design, patented or otherwise, that may in any way be related to or disclosed by said drawings, specifications, or other data.			UNLESS OTHERWISE SPECIFIED DIMENSIONS ARE METRIC [INCHES] AND TOLERANCES ARE: <0.5mm = ±0.05mm      [ <0.020 = ±0.002] >0.5 - 6mm = ±0.1mm    [ >0.020 - 0.236 = ±0.004] >6.00 - 30mm = ±0.2mm   [ >0.236 - 1.181 = ±0.008] >30.00 - 120mm = ±0.3mm [ >1.181 - 4.725 = ±0.012] ----- ANGLES = ±1°			MATERIAL COPPER NICKEL ALLOY	TITLE CONTACT PIN		Amphenol RF		
			SIZE B	DRAWING NO. CP99APD01		REV B					
			ITEM NO. CP99APD01A								
			PART NO. 923-10852								
THIRD ANGLE PROJ.			REFERENCE	EAR# 7949	ENGINEER TANGOR.DENG	DATE 20-Nov-20	SHEET NO. 3 OF 3	SCALE: 5.0:1.0			