

NOTES:

REFERENCE STANDARD IEC60169-4

I. ELECTRIC PERFORMANCE

IMPEDANCE (Ω) : 50
FREQUENCY RANGE : DC - 3GHz
VSWR : \leq 1.10
PIM(dBc) : <-160
INSERTION LOSS(dB) : < 0.05
INSULATION RESISTANCE ($M\Omega$) : >10000
PROOF VOLTAGE (V) : 3000
CONDUCTOR RESISTANCE ($m\Omega$) : OUTER CONDUCTOR <0.2
INNER CONDUCTOR <0.8

II. MECHANICAL PERFORMANCE

NUT TORQUE : 25N.m
(NUT) WHORL PULL : 1000N
TENSILE FORCE (CABLE-CONNECTOR) : 500N
TORSION (CABLE-CONNECTOR) : 5N.m

III. ENVIRONMENT

TEMP RANGE : -55 °C ~+155 °C
WEATHER STANDARD : IEC 60068 55 / 155 / 56
THERMAL SHOCK : US MIL-STD 202,Meth.107,Cond.B
VIBRATION : US MIL-STD 202,Meth.204,Cond.B
SHOCK : US MIL-STD 202,Meth.213,Cond.I
WEATHER PROOFING STANDARD :IP68

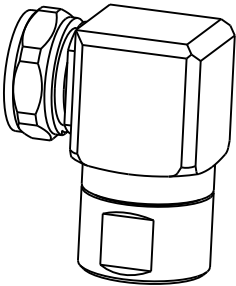
IV. ASSEMBLY: INNER AND OUTER CONDUCTOR INSTALLED

V. ROHS COMPLIANT.

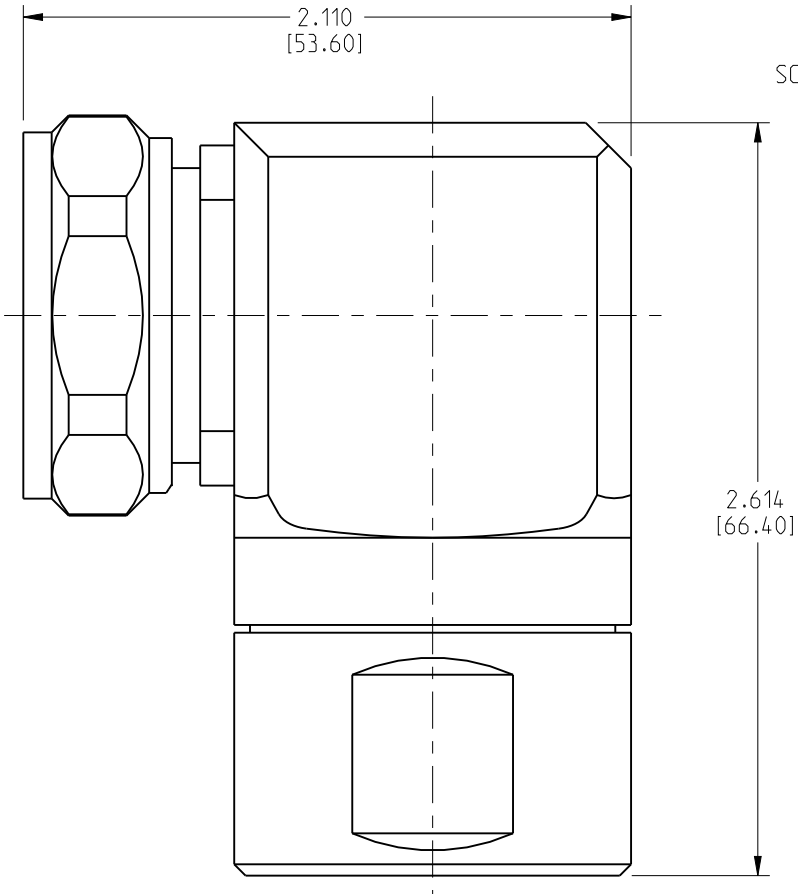
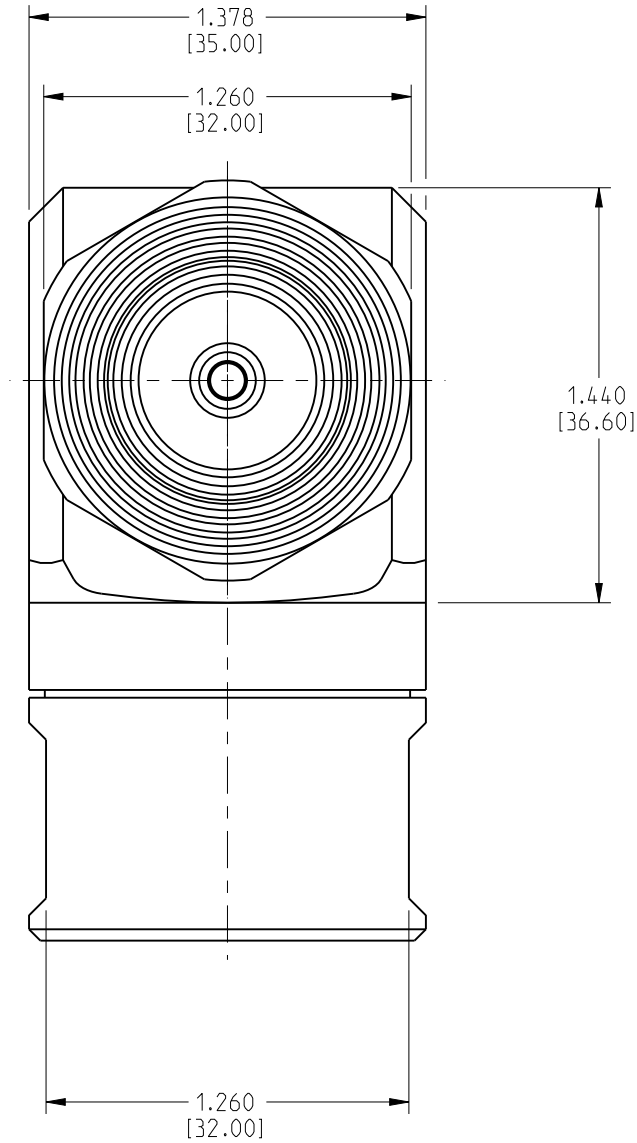
272FPRH5

REVISIONS

DRAWING NO.	REV	DESCRIPTION	DATE	ECO	APPR
THIRD ANGLE PROJ. 	A	RELEASE TO MFG.	20-Aug-12	--	MG



SCALE 0.500



5	NUT	BRASS	NICKEL
4	INSULATOR	PTFE	NATURAL
3	O-RING	SILICONE RUBBER	
2	OUTER CONDUCTOR	BRASS	WHITE BRONZE
1	INNER CONDUCTOR	SPRING COPPER	SILVER
S.NO	DESCRIPTION	MATERIAL	FINISH

UNLESS OTHERWISE SPECIFIED, DIMENSIONS ARE IN INCHES AND TOLERANCES ARE: 2 PLACE DECIMAL 3 PLACE DECIMAL ANGLES ±.015 (0,381 mm) ±.005 (0,127 mm) ± 1°	MATERIAL	DRAWN	DATE	TITLE 7/16 RIGHT ANGLE PLUG FOR 7/8" CABLE		Amphenol Connex	
	SEE TABLE	GOPI M	20-Aug-12				
		ENGINEER	DATE				
	REFERENCE	GOPI M	20-Aug-12				
		APPROVED	DATE				
NOTICE - These drawings, specifications, or other data (1) are, and remain the property of Amphenol Corp. (2) must be returned upon request; and (3) are confidential and not to be disclosed to any person other than those to whom they are given by Amphenol Corp. The furnishing of these drawings, specifications, or other data by Amphenol Corp., or to any other person to anyone for any purpose is not to be regarded by implication or otherwise in any manner licensing, granting rights or permitting such holder or any other person to manufacture, use or sell any product, process or design, patented or otherwise, that may in any way be related to or disclosed by said drawings, specifications, or other data.	CAD FILE	DWG SIZE		DRAWING NO.		REV	
		B	272FPRH5		A		
		SCALE: 1.5:1		SHEET		1 OF 1	

NOTICE - These drawings, specifications, or other data (1) are, and remain the property of Amphenol Corp. (2) must be returned upon request; and (3) are confidential and not to be disclosed to any person other than those to whom they are given by Amphenol Corp. The furnishing of these drawings, specifications, or other data by Amphenol Corp., or to any other person to anyone for any purpose is not to be regarded by implication or otherwise in any manner licensing, granting rights or permitting such holder or any other person to manufacture, use or sell any product, process or design, patented or otherwise, that may in any way be related to or disclosed by said drawings, specifications, or other data.