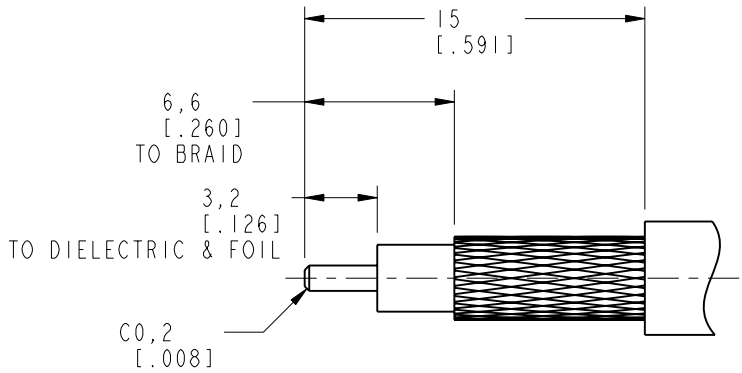


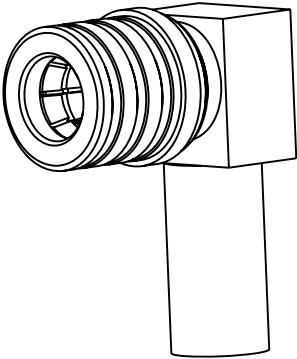
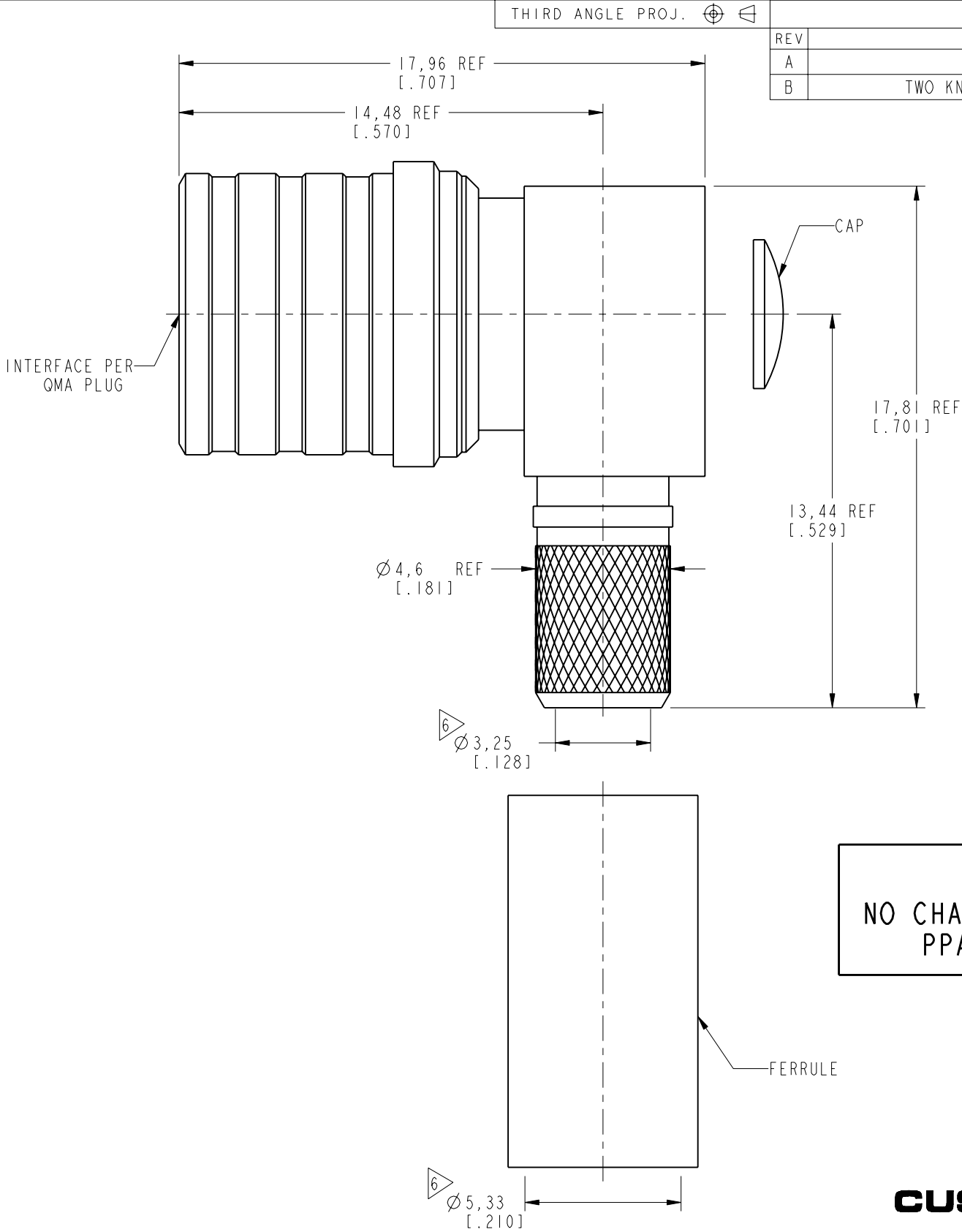
NOTES:

1. MATERIALS AND FINISHES:
BODY, CAP & SLEEVE - BRASS, WHITE BRONZE PLATING
OUTER CONTACT - PHOSPHOR BRONZE, WHITE BRONZE PLATING
CONTACT - BRASS, GOLD PLATING
INSULATOR - PTFE, NATURAL
FERRULE - COPPER, WHITE BRONZE PLATING
2. ELECTRICAL:
A. IMPEDANCE: 50 OHM
B. FREQUENCY RANGE: DC - 6 GHz
C. VSWR: 1.15 + 0.02F
3. MECHANICAL:
A. DURABILITY: 100 CYCLES MIN.
B. TEMPERATURE RANGE: -40°C TO +85°C
C. CONTACT RETENTION: 6 LBS, AXIAL
4. PACKAGING:
A. QUANTITY: SINGLE PACK
B. MARKING: BAG TO BE MARKED
"AMPHENOL RF, 930-251P-51A, DATE CODE"
5. CABLE ASSEMBLY INSTRUCTIONS:
A. TRIM CABLE AS SHOWN.
B. SLIDE FERRULE ONTO CABLE.
C. INSERT CABLE, UNTIL IT BOTTOMS, WITH FOIL ENTERING CONNECTOR AND BRAID OVER KNURL.
D. SOLDER CABLE CENTER CONDUCTOR TO CONTACT.
E. CRIMP FERRULE OVER BRAID WITH .216" HEX DIE.
F. DEPRESS EXPANSION CAP IN ACCESS HOLE.

6 SHOWS CABLE ENTRY DIMENSIONS.



RECOMMENDED CABLE STRIPPING DIMENSIONS



SCALE 2.000

CONFIGURATION CONTROL:
NO CHANGES PERMITTED TO DRAWING WITHOUT
PPAP QUALIFIED CUSTOMER APPROVAL

CUSTOMER OUTLINE DRAWING

ALL OTHER SHEETS ARE FOR INTERNAL USE ONLY

UNLESS OTHERWISE SPECIFIED, DIMENSIONS ARE IN METRIC AND TOLERANCES ARE: <0.5mm 0.5 - 6mm 6 - 30mm 30 - 120mm ANGLES ± 0.05mm ±0.1mm ±0.2mm ± 0.3mm ±1° NOTICE - These drawings, specifications, or other data (1) are, and remain the property of Amphenol corp. (2) must be returned upon request; and (3) are confidential and not to be disclosed to any person other than those to whom they are given by Amphenol Corp. the furnishing of these drawings, specifications, or other data by Amphenol Corp., or to any other person to anyone for any purpose is not to be regarded by implication or otherwise in any manner licensing, granting rights to permitting such holder or any other person to manufacture, use or sell any product, process or design, patented or otherwise, that may in any way be related to or disclosed by said drawings, specifications, or other data.	MATERIAL	DRAWN	DATE	TITLE		Amphenol RF www.amphenolrf.com	
	SEE NOTES	W.ZENG	1-Aug-19				
	REFERENCE	ENGINEER	DATE	50 OHM QMA RA PLUG FOR LMR 200 CABLE		DRAWING NO. 930-251P-51A	
	EAR# 6061	S.DUAN	26-Mar-19			ITEM NO. 930-251P-51A	
	REF: 930-110P-51A	APPROVED	DATE	SCALE: 5.3:1.0 SHEET 2 OF 2		PART NO. 930-251P-51A	
	CONFIGURATION LEVEL: In Work	S.HSIEH	12-Aug-19	DWG SIZE		REV	
	FINISH	CAD FILE		B		B	