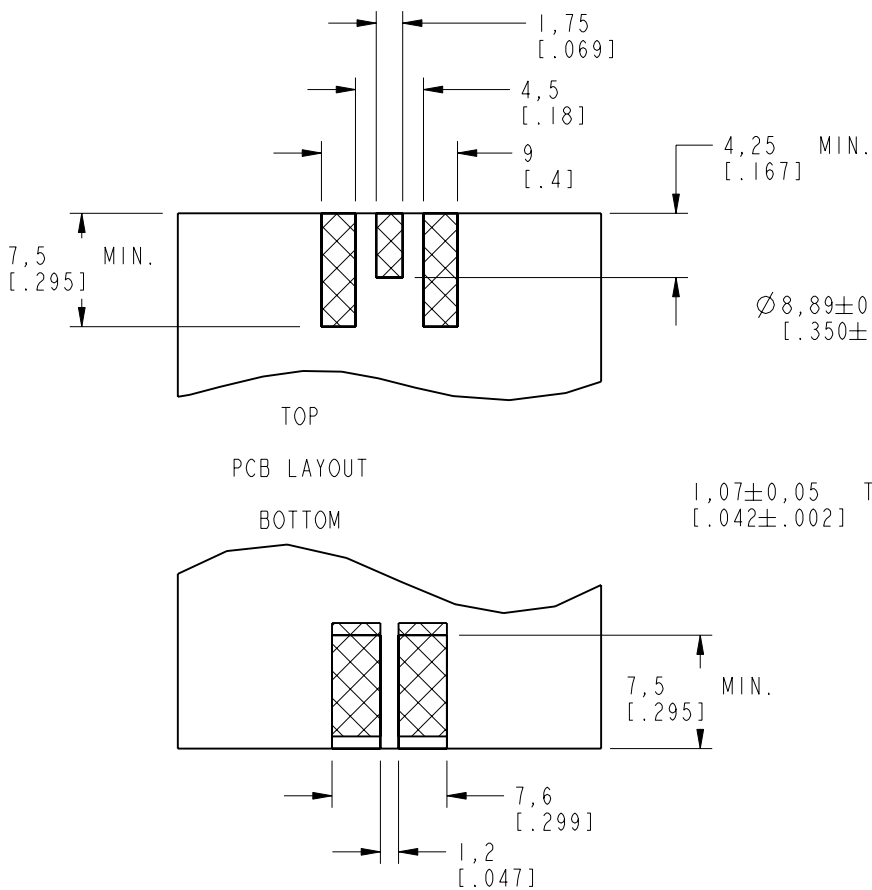


NOTES:

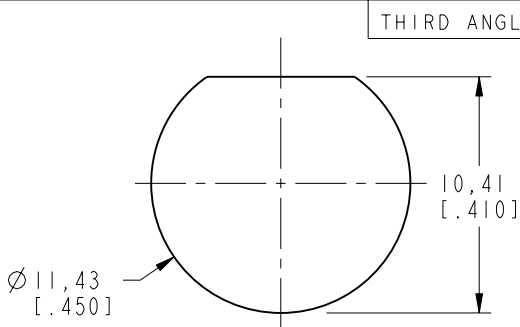
1. MATERIALS OF CONSTRUCTION:  
COUPLING NUT - BRASS, NICKEL PLATED  
BODY - BRASS, GOLD PLATED OVER HIGH PHOSPHORUS CONTENT ELECTROLESS NICKEL  
CONTACT - BRASS, GOLD PLATED OVER HIGH PHOSPHORUS CONTENT ELECTROLESS NICKEL  
INSULATOR - PTFE, NATURAL  
O-RINGS - SILICONE RUBBER, RED
2. ELECTRICAL:  
A. IMPEDANCE: 50 OHM  
B. FREQUENCY RANGE: DC TO 3GHz  
C. VSWR: 1.15 MAX TO 3.0 GHz
3. MECHANICAL:  
A. TEMPERATURE RANGE: -65° C TO +165° C  
B. SEALING REQUIREMENTS: DESIGN WHEN MOUNTED ON PANEL MUST  
WITHSTAND WATER PRESSURE AT DEPTH OF 1 METER FOR 30 MIN.  
WITHOUT ANY SIGN OF LEAKAGE IN MATED AND UNMATED CONDITIONS
4. PACKAGING:  
A. QUANTITY: SINGLE PACK  
B. MARKING: BAG TO BE MARKED  
"AMPHENOL, 31-6805, AND DATE CODE"



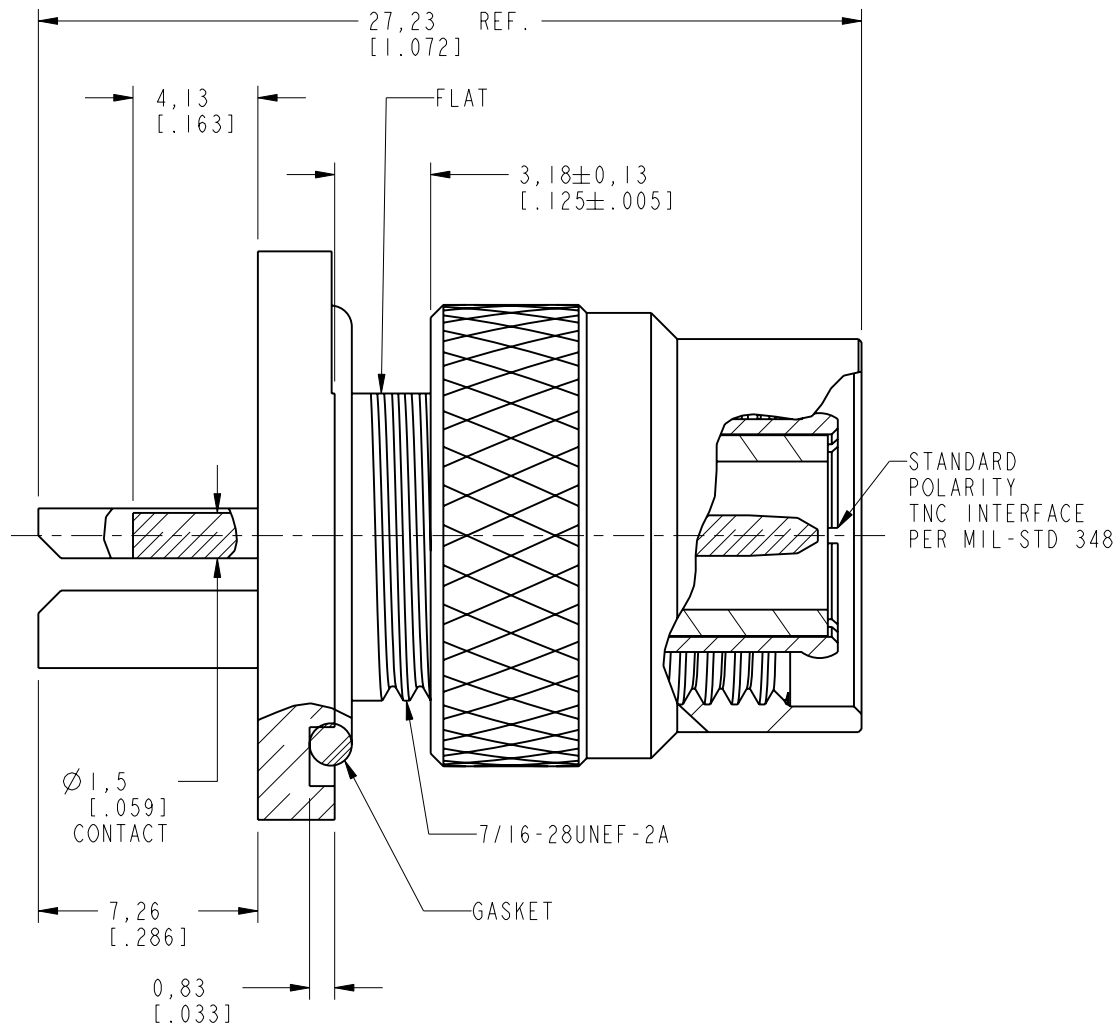
$\varnothing 8,89 \pm 0,05$   
[.350  $\pm$  .002]

1,07  $\pm$  0,05  
[.042  $\pm$  .002] TYP.

SURFACES COPLANER  
WITHIN 0.13 [0.051]



RECOMMENDED  
MOUNTING PANEL DIMENSIONS



CUSTOMER OUTLINE DRAWING

ALL OTHER SHEETS ARE FOR INTERNAL USE ONLY

UNLESS OTHERWISE SPECIFIED, DIMENSIONS ARE IN METRIC AND TOLERANCES ARE:  
<0.5mm 0.5 - 6mm 6 - 30mm 30 - 120mm ANGLES  
 $\pm$  0.05mm  $\pm$  0.1mm  $\pm$  0.2mm  $\pm$  0.3mm  $\pm$  1°

NOTICE - These drawings, specifications, or other data (1) are, and remain the property of Amphenol Corp. (2) must be returned upon request; and (3) are confidential and not to be disclosed to any person other than those to whom they are given by Amphenol Corp. the furnishing of these drawings, specifications, or other data by Amphenol Corp., or to any other person to anyone for any purpose is not to be regarded by implication or otherwise in any manner licensing, granting rights to permitting such holder or any other person to manufacture, use or sell any product, process or design, patented or otherwise, that may in any way be related to or disclosed by said drawings, specifications, or other data.

MATERIAL

-

REFERENCE

EAR# 7879

REF: --

CONFIGURATION LEVEL: In Work

FINISH

DRAWN

K. ELMES

ENGINEER

K. ELMES

APPROVED

S.HSIEH

CAD FILE

DATE

21-Jul-17

DATE

21-Jul-17

DATE

07-Feb-18

TITLE

TNC BHD PLUG IP-67  
(UNMATED) EDGE MOUNT  
FOR .032" BOARD

SCALE: 4.0:1.0 SHEET 2 OF 2

DWG SIZE

B

REV

A

REVISIONS

REV	DESCRIPTION	DATE	ECN	APPR
A	RELEASE TO MFG.	07-Feb-18	06703	RM

