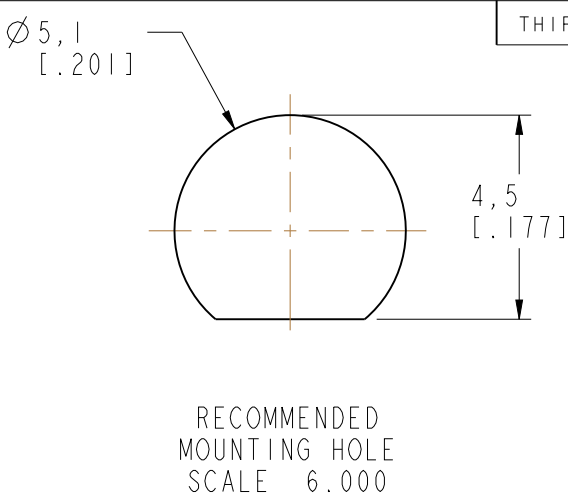
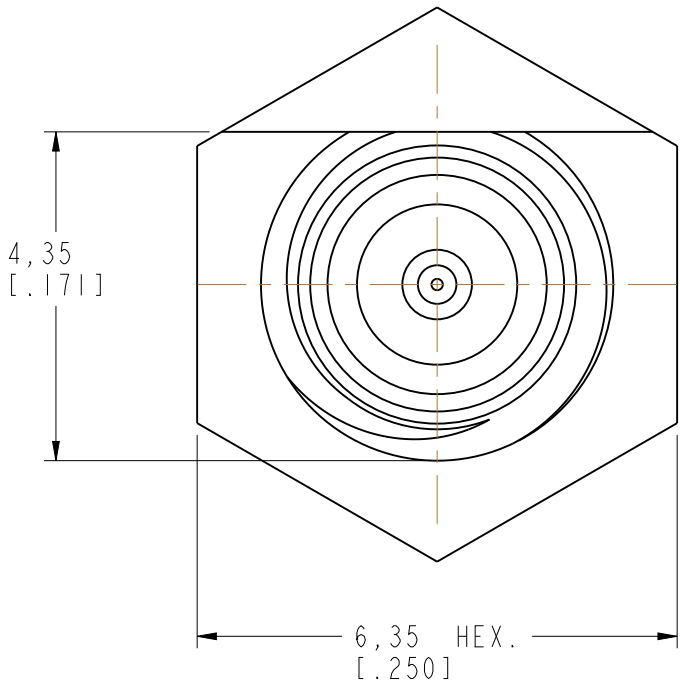
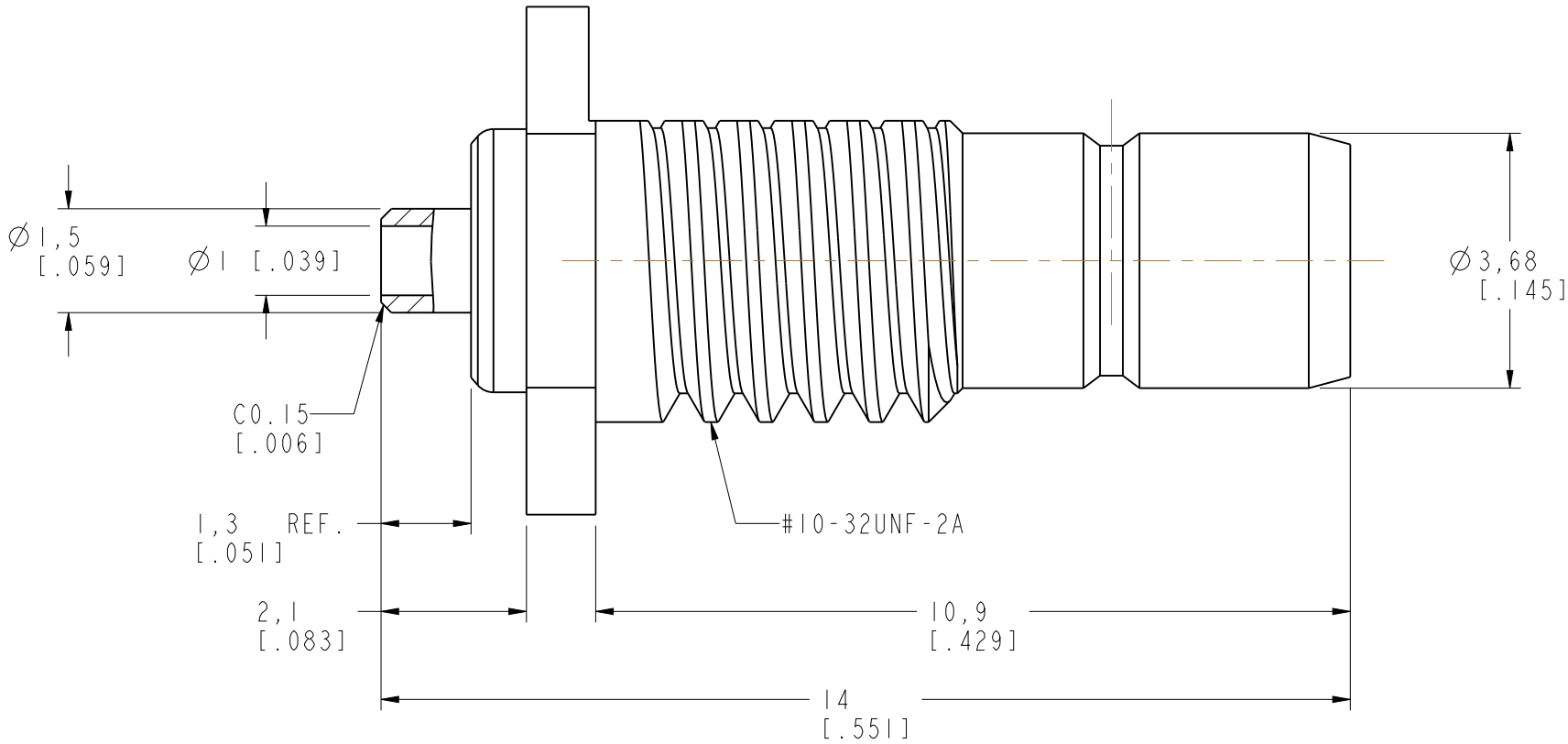
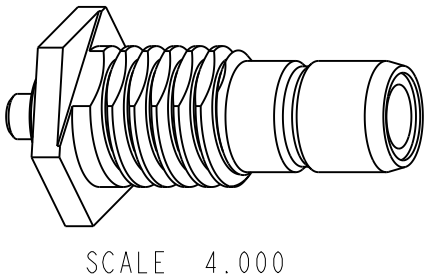


NOTES:

1. MATERIALS AND FINISHES:
BODY - BRASS, GOLD PLATING
CONTACT PIN - BRASS, GOLD PLATING
INSULATOR - PTFE, NATURAL
2. ELECTRICAL:
A. IMPEDANCE: 50 OHM
B. FREQUENCY RANGE: DC - 4 GHz
C. VSWR : 1.3 MAX.
D. D.W.V.: 1000 VRMS, MIN.
3. MECHANICAL:
A. DURABILITY: 500 CYCLES MIN.
B. TEMPERATURE RANGE: -65°C TO +165°C



REVISIONS				
REV	DESCRIPTION	DATE	ECO	APPR
A	RELEASE TO MFG	29-Aug-14	-----	RM
B	UPDATED NOTES AND FORMAT	25-Mar-15	2824	BCG



CUSTOMER OUTLINE DRAWING
ALL OTHER SHEETS ARE FOR INTERNAL USE ONLY

UNLESS OTHERWISE SPECIFIED, DIMENSIONS ARE IN METRIC AND TOLERANCES ARE: <0.5mm ± 0.05mm 0.5 - 6mm ± 0.1mm 6 - 30mm ± 0.2mm 30 - 120mm ± 0.3mm ANGLES ± 1°	MATERIAL -	DRAWN M.ZHANG	DATE 16-May-14	TITLE SMB JACK, BULKHEAD RECEPTACLE		Amphenol Connex	
		ENGINEER S.DUAN	DATE 16-May-14				
		REFERENCE EAR# 6246 SMB1451B1-012-3GT5GP-50	APPROVED S.HSIEH	DATE 16-May-14	SCALE: 10.0:1.0	SHEET 3 OF 3	DRAWING NO.
		FINISH	CAD FILE		DWG SIZE B	REV B	ITEM NO. PART NO. 142154-2