

Installation instructions of 4.3/10 screw type male connector for 1/2" superflexible cable

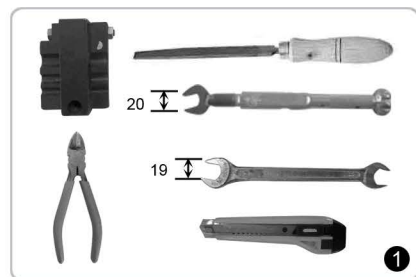
AFDF59-2

ITEM: 2161020.1

Please read the instruction carefully before assembly.

Tools and Material:

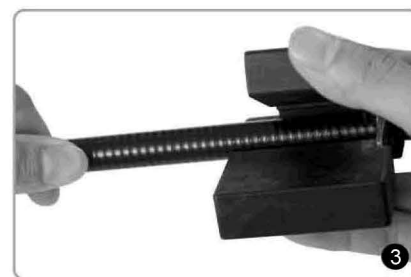
Scale (with mm graduations), trimming tool, cable knife, plier, spanner, torque spanner, flat file, and other special tools.



Assembly tools (required).



Connector components.



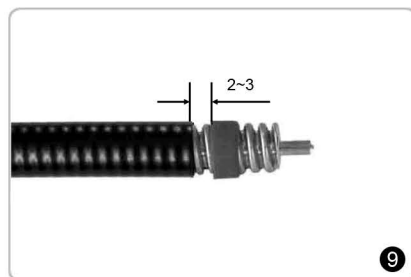
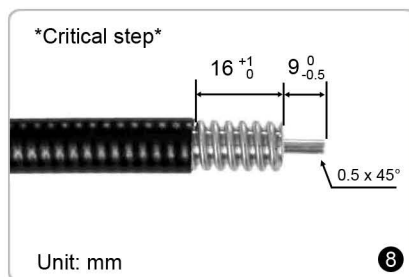
Trim the cable.



Cut the cable jacket.



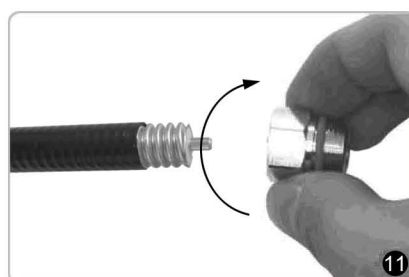
Chamfer inner conductor with flat file.



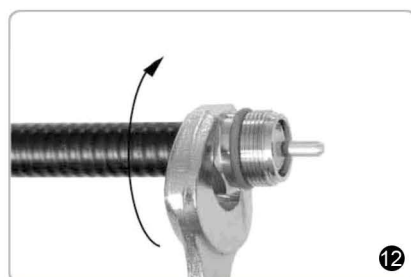
Put the screw gasket onto the cable.
The angle direction towards the front.



Wipe the gasket with grease.



Put on the cable clamp.



Amphenol

Installation instructions of 4.3/10 screw type male connector for 1/2" superflexible cable

AFDF59-2

ITEM: 2161020.1



The front interface of clamp and outer conductor should be flat.



Wipe the O-ring with grease.



Screw the connector head onto the cable clamp.



Keep the clamp steady, screw the connector head onto the cable clamp tightly. Recommended torque is 25 N.m.



Finished.