

NOTES:

1. MATERIALS AND FINISHES:

- FERRULE
- BRASS, GOLD PLATING
- BODY
- BeCu, GOLD PLATING
- HOUSING
- BRASS, GOLD PLATING
- CONTACT
- BRASS, GOLD PLATING
- INSULATOR
- PTFE, NATURAL

2. ELECTRICAL:

- A. IMPEDANCE:
- 75 OHM, NOMINAL
- B. FREQUENCY RANGE:
- 0-3 GHz
- C. D.W.V:
- 500 VRMS, MIN.

3. MECHANICAL:

- A. DURABILITY:
- 500 CYCLES MIN.
- B. TEMPERATURE RANGE:
- 55°C TO +155°C

4. CRIMPED FERRULE HEX CRIMP SIZE .255"

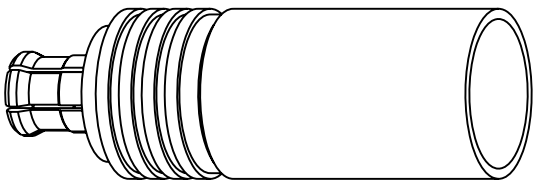
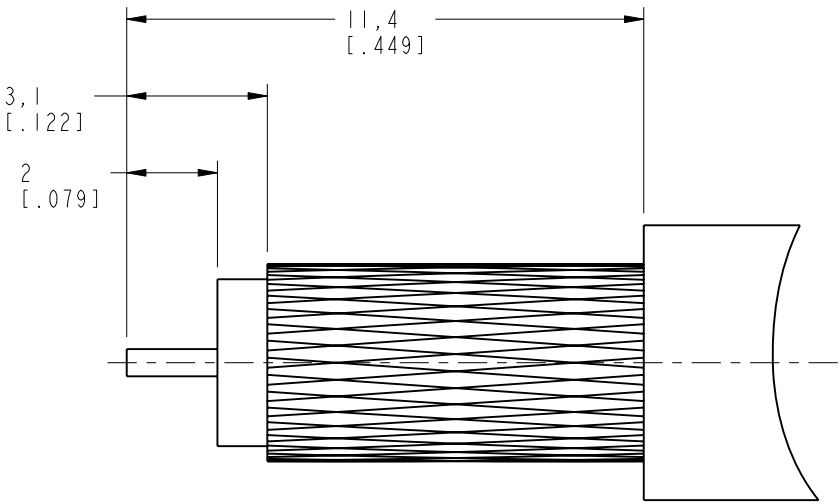
5. CONTACT PIN TO SOLDER

6 SHOWS CABLE ENTRY DIMENSIONS.

THIRD ANGLE PROJ.

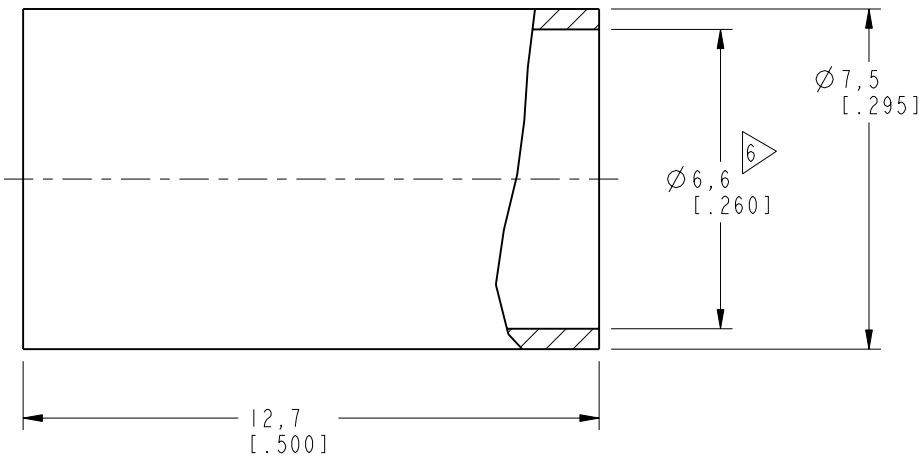
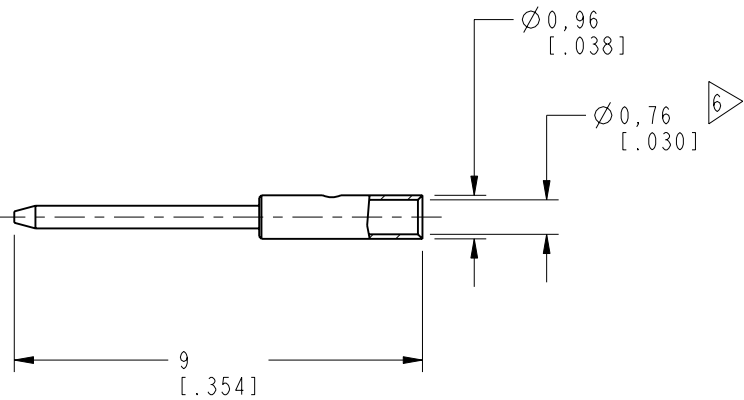
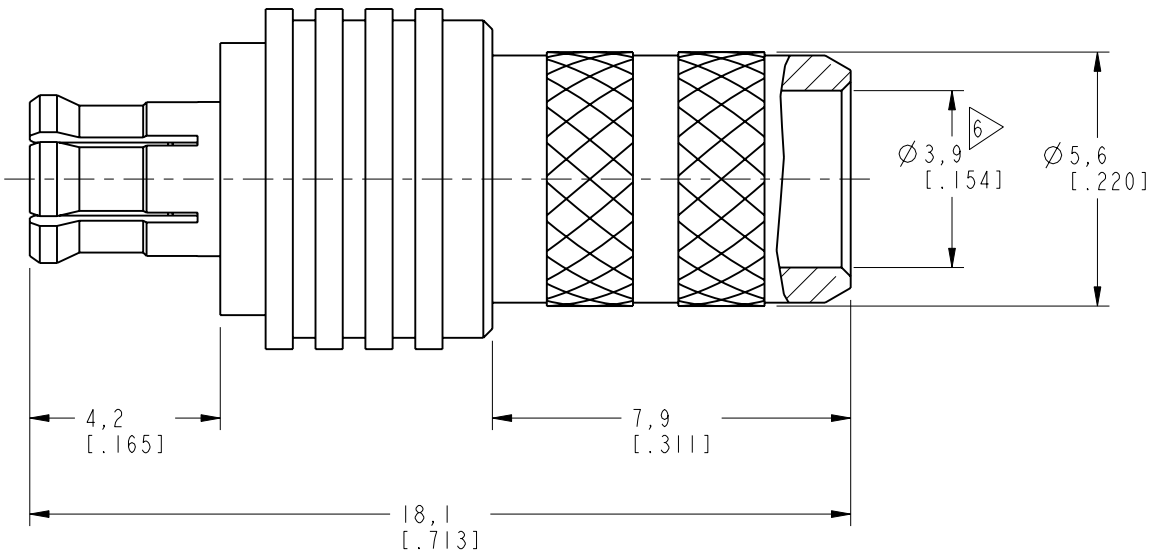
REVISIONS

REV	DESCRIPTION	DATE	ECO	APPR
NC	INITIAL RELEASE	23-Aug-07	-----	GRS
A	UPDATE DRAWING FORMAT	25-Feb-14	-----	MZ
B	SYNC, REDRAWN IN THE PRO/E\N/A	16-Aug-17	04723	MZ



SCALE 3.000

RECOMMENDED
CABLE STRIPPING DIM'S



CUSTOMER OUTLINE DRAWING
ALL OTHER SHEETS ARE FOR INTERNAL USE ONLY

UNLESS OTHERWISE SPECIFIED, DIMENSIONS ARE IN METRIC AND TOLERANCES ARE: <0.5mm 0.5 - 6mm 6 - 30mm 30 - 120mm ANGLES ± 0.05mm ±0.1mm ±0.2mm ± 0.3mm ±1° NOTICE - These drawings, specifications, or other data (1) are, and remain the property of Amphenol corp. (2) must be returned upon request; and (3) are confidential and not to be disclosed to any person other than those to whom they are given by Amphenol Corp. the furnishing of these drawings, specifications, or other data by Amphenol Corp., or to any other person to anyone for any purpose is not to be regarded by implication or otherwise in any manner licensing, granting rights to permitting such holder or any other person to manufacture, use or sell any product, process or design, patented or otherwise, that may in any way be related to or disclosed by said drawings, specifications, or other data.	MATERIAL	DRAWN	DATE	TITLE		Amphenol RF	
	-	M.ZHANG	16-Aug-17				
	-	ENGINEER	DATE	(MCX CRIMP PLUG (FOR RG-59/U CABLE))		www.amphenolrf.com	
		S.XIE	11-Oct-07				
	REFERENCE	APPROVED	DATE	SCALE: 6.0:1.0		SHEET 2 OF 2	
	AND	H.HE	16-Aug-17				
CONFIGURATION LEVEL:	CAD FILE		DWG SIZE		REV		
FINISH							B
					PART NO. 252194-75		