

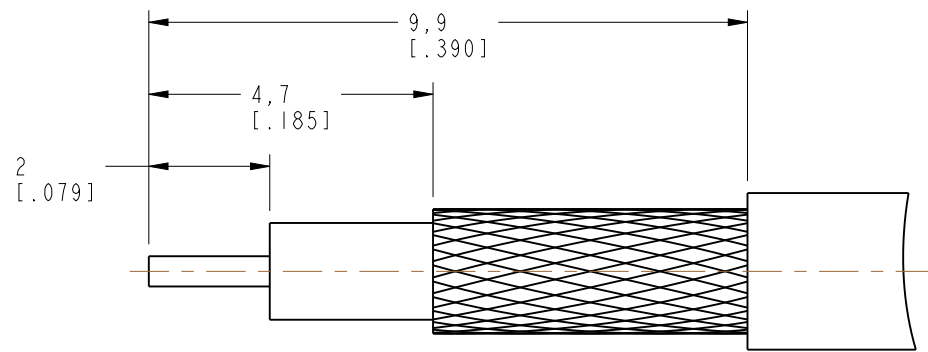
NOTES:

1. MATERIALS AND FINISHES:  
FERRULE - COPPER, GOLD PLATING  
BODY - BRASS, GOLD PLATING  
CONTACT - BERYLLIUM COPPER, GOLD PLATING  
INSULATOR - PTFE, NATURAL
2. ELECTRICAL:  
A. IMPEDANCE: 50 OHM, NOMINAL  
B. FREQUENCY RANGE: 0-6 GHz  
C. VSWR (RETURN LOSS): 1.30 MAX. @ 0-36HZ  
D. D.W.V: 500 VRMS, MIN.
3. MECHANICAL:  
A. DURABILITY: 500 CYCLES MIN.  
B. TEMPERATURE RANGE: -55°C TO +155°C
4. CRIMPED FERRULE HEX CRIMP SIZE .151"
5. CONTACT PIN TO SOLDER
6. SHOWS CABLE ENTRY DIMENSIONS.

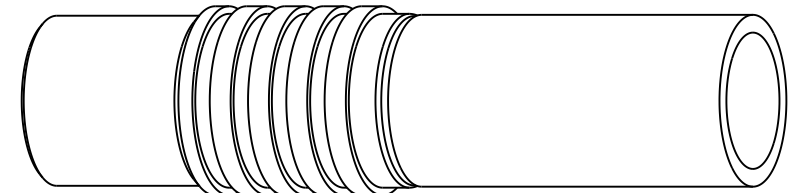
THIRD ANGLE PROJ. 

REVISIONS

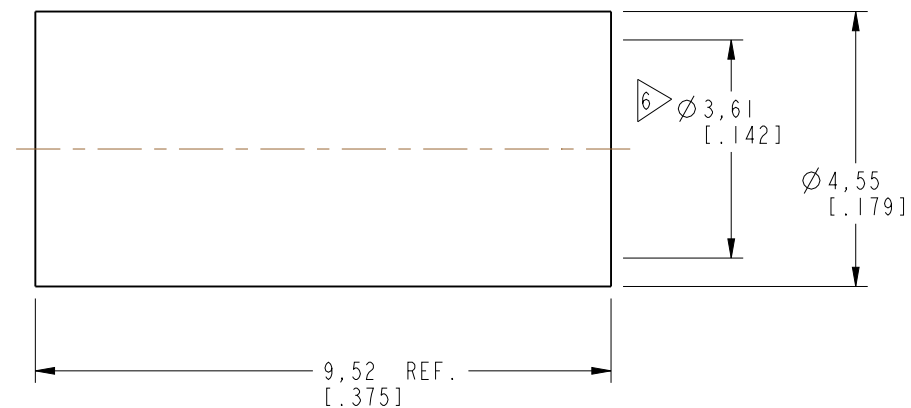
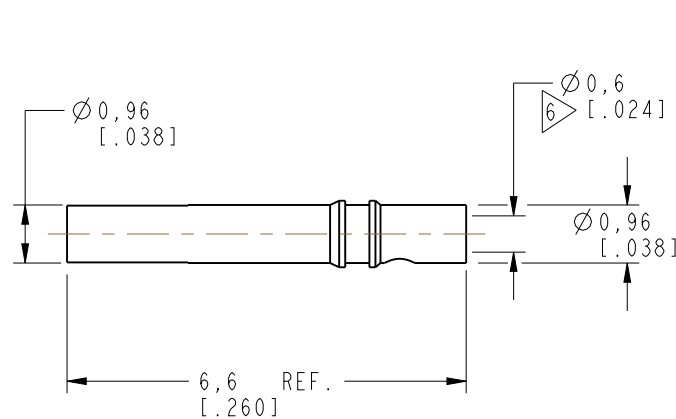
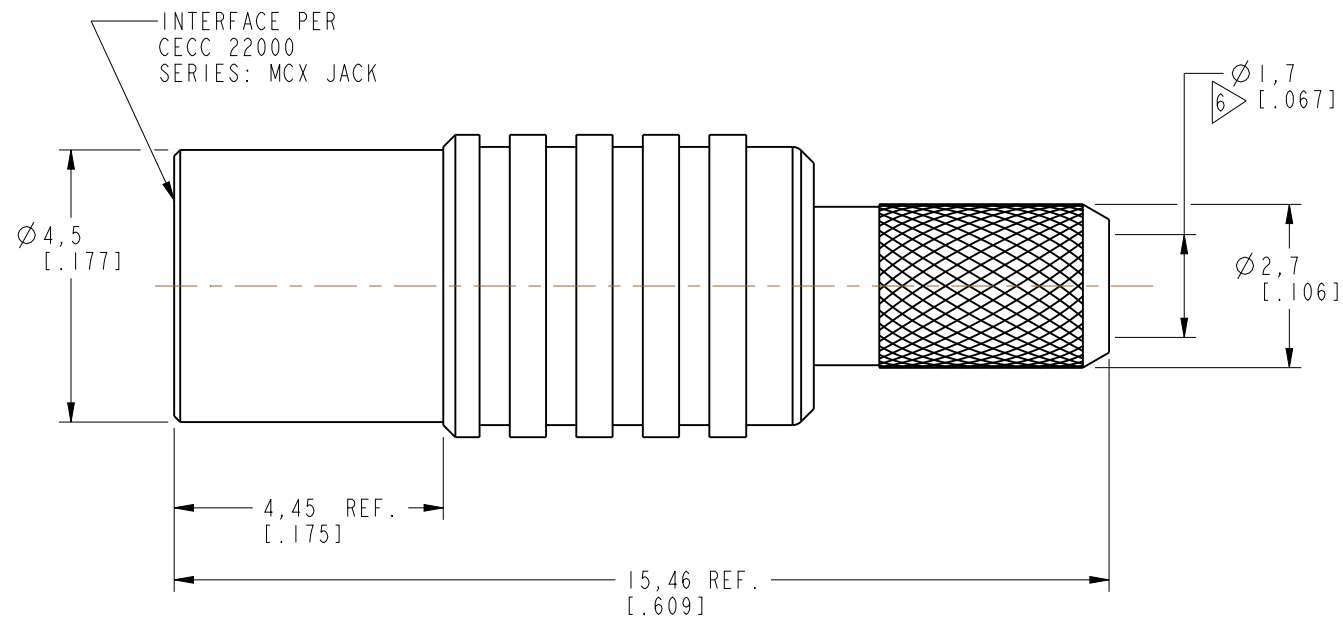
REV	DESCRIPTION	DATE	ECN	APPR
NC	INITIAL RELEASE	14-May-06	-----	GRS
A	SYNC, REDRAWN IN PRO/E	25-Apr-19	11309	MZ



**RECOMMENDED  
CABLE STRIPPING DIM'S**



SCALE 5.000



**CUSTOMER OUTLINE DRAWING**

ALL OTHER SHEETS ARE FOR INTERNAL USE ONLY

UNLESS OTHERWISE SPECIFIED, DIMENSIONS ARE IN METRIC AND TOLERANCES ARE: <0.5mm      0.5 - 6mm      6 - 30mm      30 - 120mm      ANGLES ± 0.05mm    ±0.1mm      ±0.2mm      ± 0.3mm      ±1°  NOTICE - These drawings, specifications, or other data (1) are, and remain the property of Amphenol corp. (2) must be returned upon request; and (3) are confidential and not to be disclosed to any person other than those to whom they are given by Amphenol Corp. the furnishing of these drawings, specifications, or other data by Amphenol Corp., or to any other person to anyone for any purpose is not to be regarded by implication or otherwise in any manner licensing, granting rights to permitting such holder or any other person to manufacture, use or sell any product, process or design, patented or otherwise, that may in any way be related to or disclosed by said drawings, specifications, or other data.	MATERIAL SEE NOTES	DRAWN M.ZHANG	DATE 11-Apr-19	TITLE MCX CRIMP JACK (FOR RG-316U/D CABLE)		Amphenol RF  www.amphenolrf.com		
	REFERENCE	ENGINEER S.DUAN	DATE 28-Aug-17			DRAWING NO. MCX6121A1-003-3GT30G-50		
	EAR#	APPROVED S.HSIEH	DATE 11-Apr-19	SCALE: 8.0:1.0    SHEET 2 OF 2		ITEM NO.    086121AAB35GE5F		
	REF:	CAD FILE	DWG SIZE B		REV A		PART NO.    252165	
	CONFIGURATION LEVEL: In Work	FINISH						