

NOTES:

1. MATERIALS AND FINISHES:

- FERRULE - BRASS, GOLD PLATING
COUPLING NUT - BRASS, GOLD PLATING
BODY - BRASS, GOLD PLATING
CONTACT - BeCu, GOLD PLATING
HOUSING - BRASS, GOLD PLATING
INSULATOR - PTFE NATURAL

2. ELECTRICAL:

- A. IMPEDANCE: 50 OHM, NOMINAL
B. FREQUENCY RANGE: 0-6 GHz
C. D.W.V: 750 VRMS, MIN.

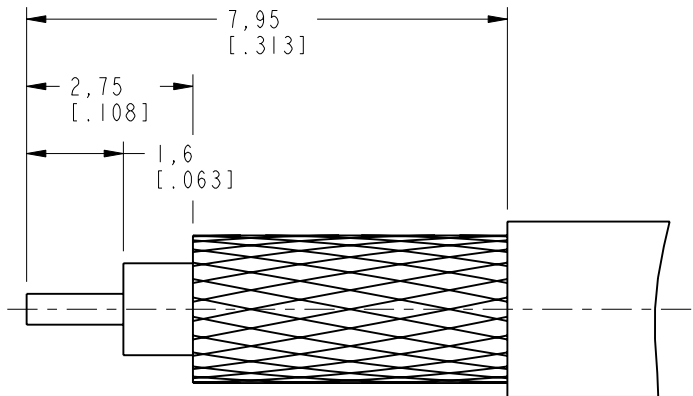
3. MECHANICAL:

- A. DURABILITY: 500 CYCLES MIN.
B. TEMPERATURE RANGE: -55°C TO +155°C

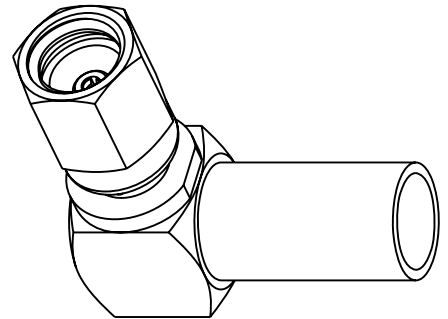
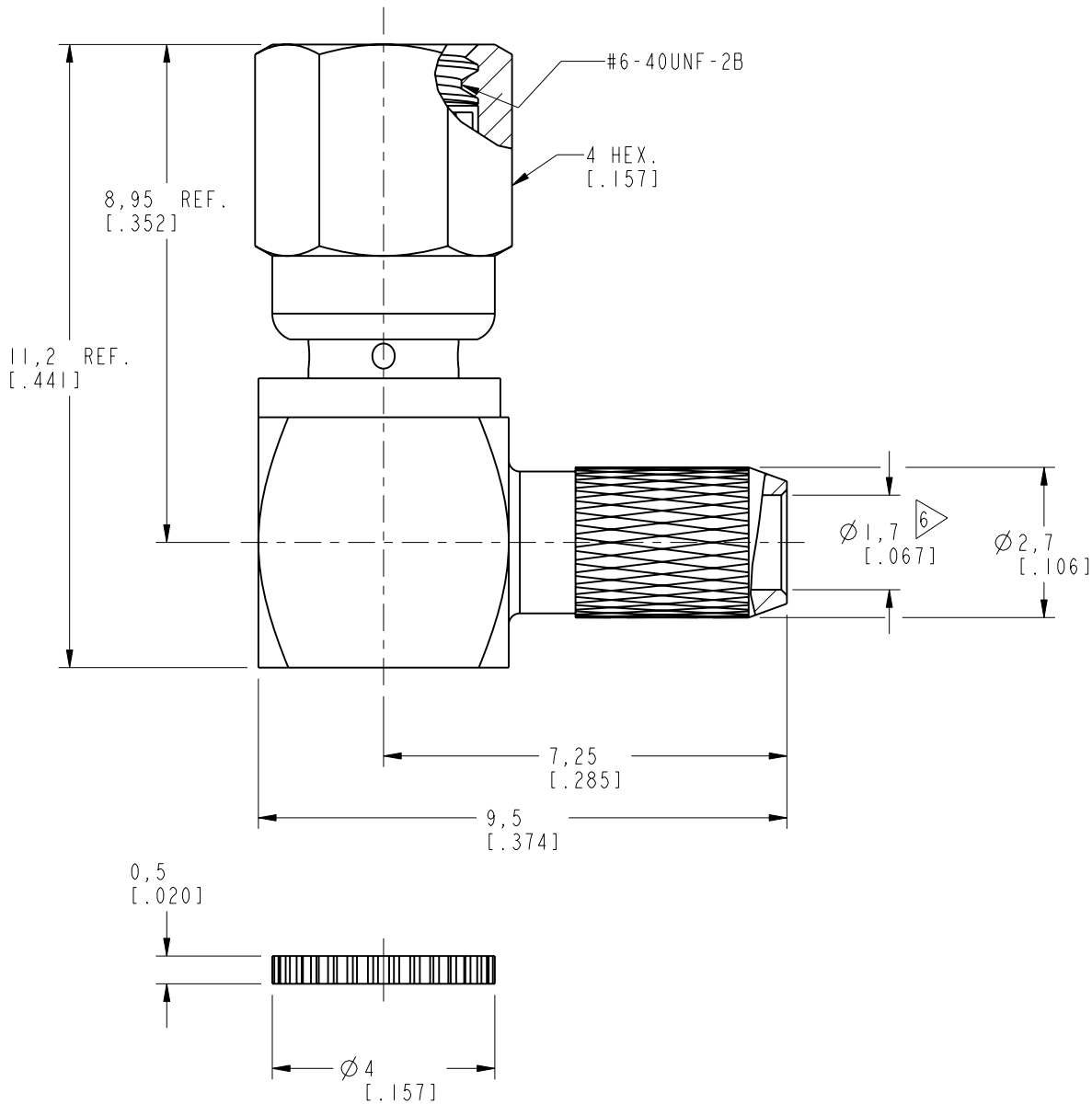
4. CRIMPED FERRULE HEX CRIMP SIZE .128"

5. CONTACT PIN TO SOLDER

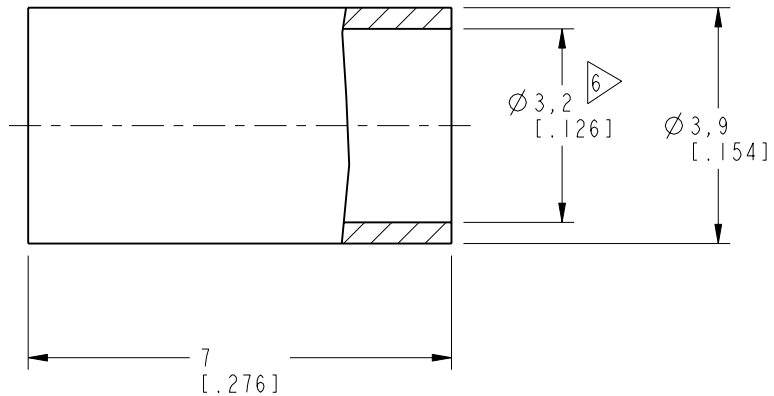
6 SHOWS CABLE ENTRY DIMENSIONS.



RECOMMENDED
CABLE STRIPPING DIM'S



SCALE 4.000



CUSTOMER OUTLINE DRAWING

ALL OTHER SHEETS ARE FOR INTERNAL USE ONLY

UNLESS OTHERWISE SPECIFIED, DIMENSIONS ARE IN METRIC AND TOLERANCES ARE:
<0.5mm ± 0.05mm 0.5 - 6mm ± 0.1mm 6 - 30mm ± 0.2mm 30 - 120mm ± 0.3mm ANGLES ± 1°

NOTICE - These drawings, specifications, or other data (1) are, and remain the property of Amphenol corp. (2) must be returned upon request; and (3) are confidential and not to be disclosed to any person other than those to whom they are given by Amphenol Corp. the furnishing of these drawings, specifications, or other data by Amphenol Corp., or to any other person to anyone for any purpose is not to be regarded by implication or otherwise in any manner licensing, granting rights to permitting such holder or any other person to manufacture, use or sell any product, process or design, patented or otherwise, that may in any way be related to or disclosed by said drawings, specifications, or other data.

MATERIAL

-

REFERENCE

AND

CONFIGURATION LEVEL: In Work

FINISH

DRAWN
M. ZHANG

DATE
14-Mar-17

ENGINEER
S. DUAN

DATE
14-Mar-17

APPROVED
S. HSIEH

DATE
15-Mar-17

CAD FILE

TITLE
SSMC R/A CRIMP PLUG
(FOR RG-174/U, 188A/U
316/U CABLE)

SCALE: 8.0:1.0 SHEET 2 OF 2

DWG SIZE
B

REV
A

Amphenol RF

www.amphenolrf.com

DRAWING NO. SSMC6112A1-3GT30G-316U-50

ITEM NO. 996112AAD36GE5F

PART NO. 153101