

NOTES:

1. MATERIALS AND FINISHES:

- CONTACT
- BRASS - WHITE BRONZE PLATED
- BODY
- BRASS - WHITE BRONZE PLATED
- SLEEVE
- BRASS - WHITE BRONZE PLATED
- FERRULE
- COPPER - WHITE BRONZE PLATED
- CAP
- BRASS - WHITE BRONZE PLATED
- OUTER CONTACT
- PHOSPHOR BRONZE - WHITE BRONZE PLATED
- MALE CONTACT
- BRASS - GOLD PLATED
- INSULATOR
- PTFE

2. PHYSICAL:

- A. OPERATING TEMPERATURE = -65°C to +165°C
- B. INTERFACE = PER 349-50692
- C. CONTACT RETENTION = 6.0 LBS. AXIAL

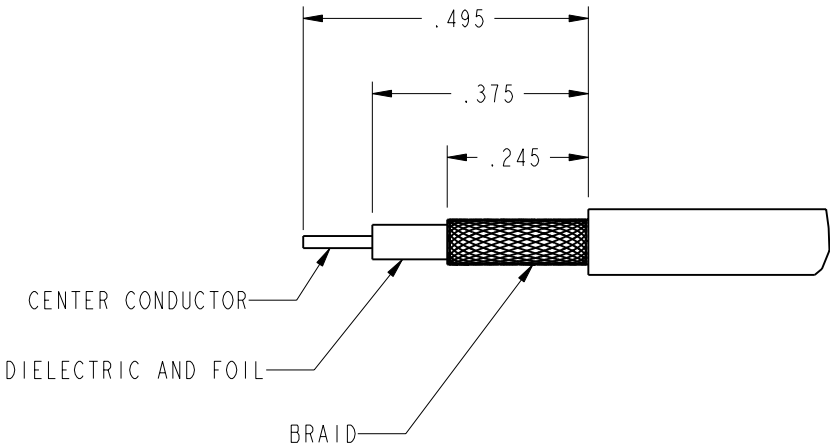
3. ELECTRICAL:

- A. FREQUENCY RANGE = DC to 6 GHz
- B. VSWR = 1.15 + .02F

4. CABLE ASSEMBLY INSTRUCTIONS PER:

- A. TRIM CABLE AS SHOWN
- B. INSERT CABLE INTO R/A ENTRY W/ BRAID OVER KNURLED AREA,FOIL UNDER
- C. CRIMP FERRULE W/ .213 HEX TOOL
- D. SOLDER CENTER CONDUCTOR TO CONTACT THROUGH ACCESS HOLE
- E. DEPRESS EXPANSION CAP IN ACCESS HOLE

RECOMMENDED CABLE STRIPPING DIMENSIONS



CUSTOMER OUTLINE DRAWING

ALL OTHER SHEETS ARE FOR INTERNAL USE ONLY

930-150P-51A

REVISIONS

DRAWING NO.

REV

DESCRIPTION

DATE

ECO

APPR

THIRD ANGLE PROJ.

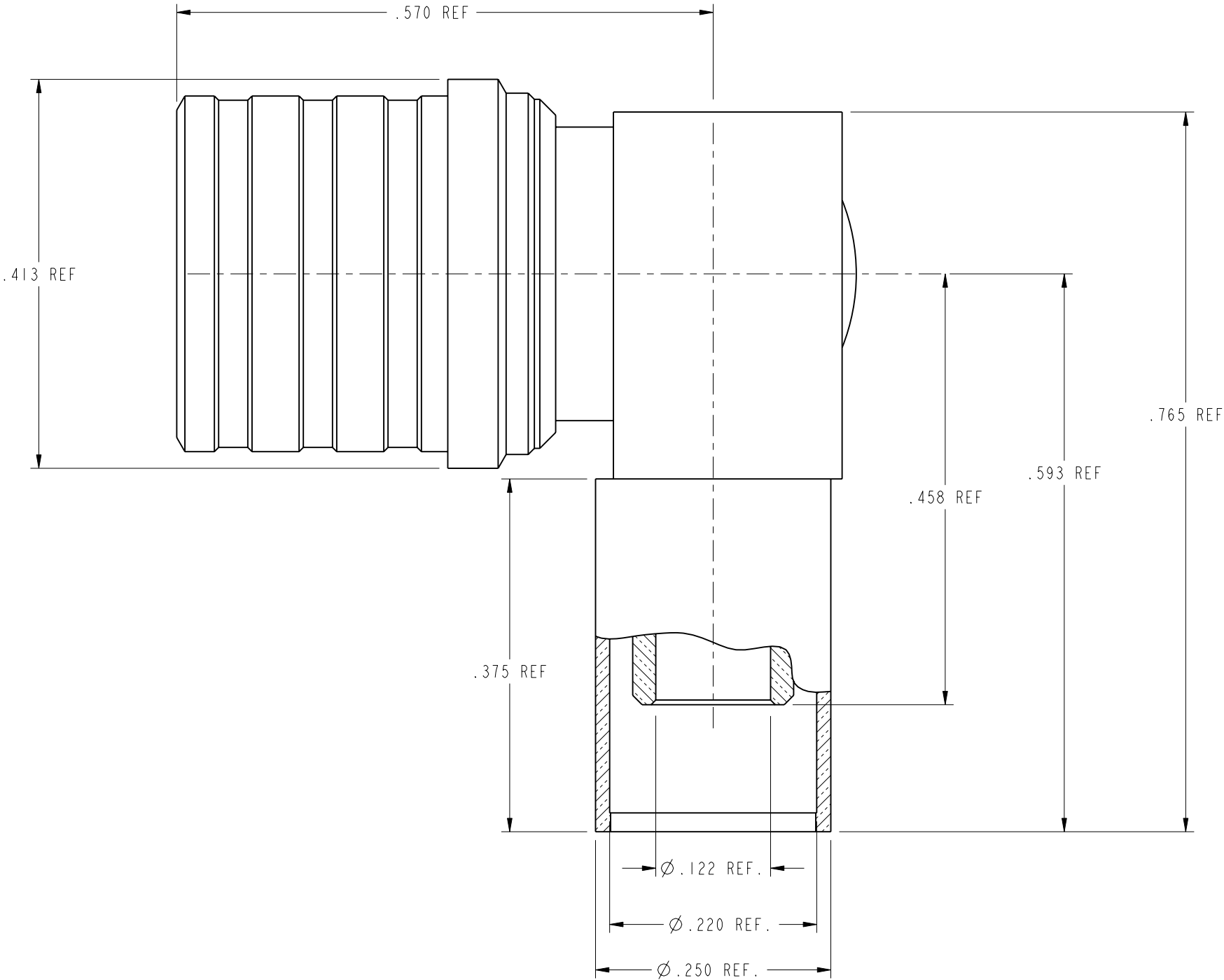
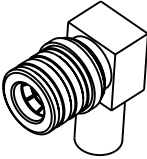
A

RELEASE TO MFG.

6/20/05

45594

SCALE 1.000



UNLESS OTHERWISE SPECIFIED, DIMENSIONS ARE IN INCHES AND TOLERANCES ARE:  
2 PLACE DECIMAL 3 PLACE DECIMAL ANGLES  
±.015 (0,381 mm) ±.005 (0,127 mm) ± 1°

NOTICE - These drawings, specifications, or other data (1) are, and remain the property of Amphenol Corp. (2) must be returned upon request; and (3) are confidential and not to be disclosed to any person other than those to whom they are given by Amphenol Corp. The furnishing of these drawings, specifications, or other data by Amphenol Corp., or to any other person to anyone for any purpose is not to be regarded by implication or otherwise in any manner licensing, granting rights or permitting such holder or any other person to manufacture, use or sell any product, process or design, patented or otherwise, that may in any way be related to or disclosed by said drawings, specifications, or other data.

MATERIAL

DRAWN

DATE

TITLE

G. ANTONINI

5/27/05

ENGINEER

DATE

G. ANTONINI

5/27/05

APPROVED

DATE

O. BARTHELMES

6/15/05

QMA 50 OHM R/A PLUG  
FOR RG-142 CABLE

Amphenol RF

Danbury, CT, USA

Tainan, Taiwan

Shenzhen, China

www.amphenolrf.com

SCALE: 7.0:1

SHEET

2 OF 2

CAD FILE

CODE ID

DWG SIZE

DRAWING NO.

REV

I:\QMA\930-150P-51A

74868

B

930-150P-51A

A