

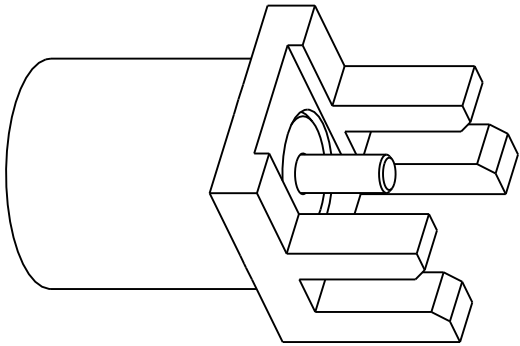
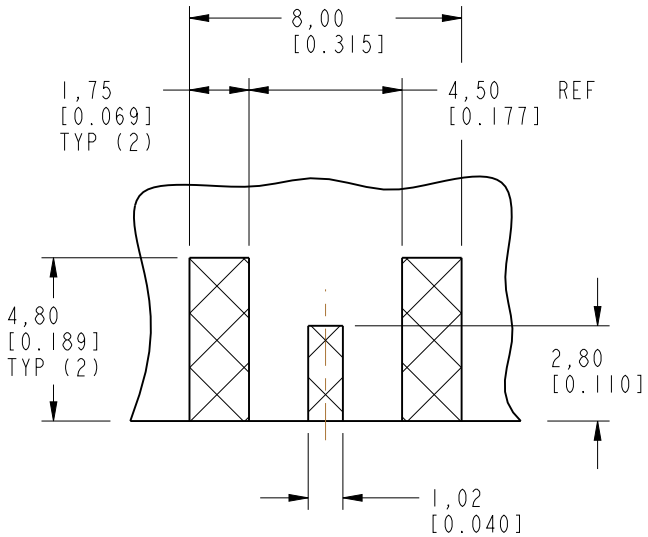
NOTES:

1. MATERIALS AND FINISHES:
BODY - BRASS, GOLD PLATING
CONTACT - BeCu, GOLD PLATING
INSULATOR - PTFE
2. ELECTRICAL:
A. IMPEDANCE: 50 OHM
B. FREQUENCY RANGE: DC - 6 GHz
3. MECHANICAL:
A. DURABILITY: 100 CYCLES MIN.
B. TEMPERATURE RANGE: -65° C TO +165° C
C. RADIAL FLOAT = ±.015
4. PACKAGING:
A. QUANTITY: SINGLE PACK
B. MARKING: BAG TO BE MARKED
"AMPHENOL RF, 920-222J-51S, AND DATE CODE"

THIRD ANGLE PROJ.

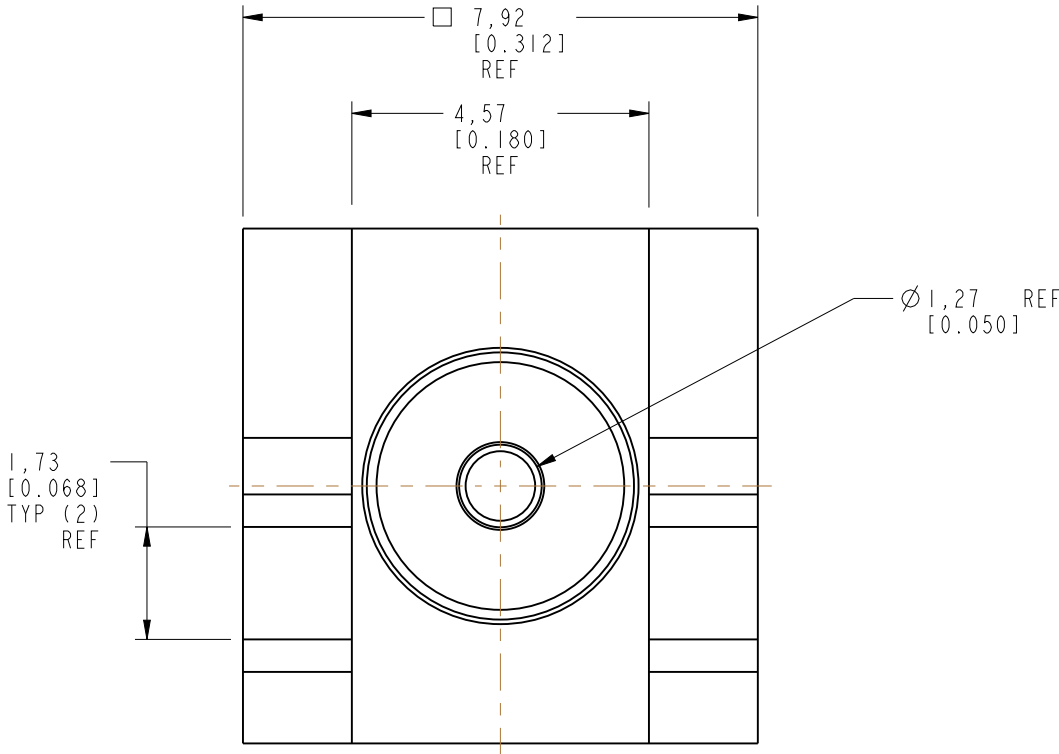
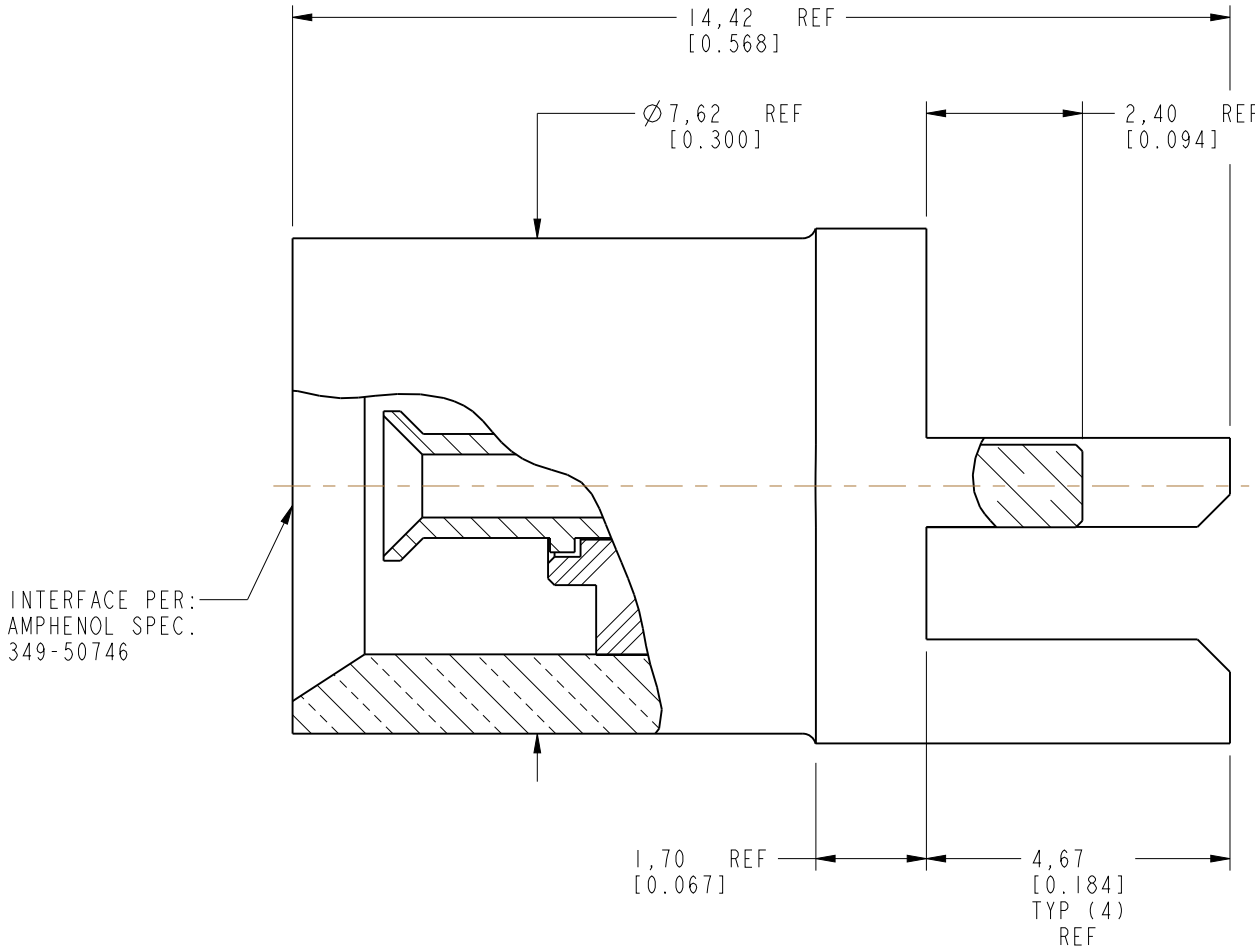
REVISIONS

REV	DESCRIPTION	DATE	ECO	APPR
A	RELEASE TO MFG.	19-Aug-13	48145	RLB



SCALE 4.000

RECOMMENDED PCB DIMENSIONS



CUSTOMER OUTLINE DRAWING
ALL OTHER SHEETS ARE FOR INTERNAL USE ONLY

<div>UNLESS OTHERWISE SPECIFIED, DIMENSIONS ARE IN METRIC AND TOLERANCES ARE: <0.5mm ± 0.05mm 0.5 - 6mm ± 0.1mm 6 - 30mm ± 0.2mm 30 - 120mm ± 0.3mm ANGLES ±1°</div> <div>NOTICE - These drawings, specifications, or other data (1) are, and remain the property of Amphenol corp. (2) must be returned upon request; and (3) are confidential and not to be disclosed to any person other than those to whom they are given by Amphenol Corp. the furnishing of these drawings, specifications, or other data by Amphenol Corp., or to any other person to anyone for any purpose is not to be regarded by implication or otherwise in any manner licensing, granting rights to permitting such holder or any other person to manufacture, use or sell any product, process or design, patented or otherwise, that may in any way be related to or disclosed by said drawings, specifications, or other data.</div>	MATERIAL	DRAWN A ARUN PRABU	DATE 19-Aug-13	TITLE ASSEMBLY AFI, JACK		Amphenol RF www.amphenolrf.com	
	-	ENGINEER A ARUN PRABU	DATE 19-Aug-13				
	REFERENCE EAR # 3758 AND	APPROVED K. CAPOZZI	DATE 14-Aug-13	SCALE: 8.6:1.0 SHEET 2 OF 2		DRAWING NO.920-222J-51S	
	CONFIGURATION LEVEL: In Work	CAD FILE		DWG SIZE B	REV A	ITEM NO.920-222J-51S	
	FINISH					PART NO.920-222J-51S	