

NOTES:

I. MATERIALS AND FINISHES:

BODY	-	BRASS	-	GOLD PLATED (.000010" MIN.)
CONTACT	-	BERYLLIUM COPPER	-	GOLD PLATED (.000030" MIN.)
INSULATOR	-	PTFE		

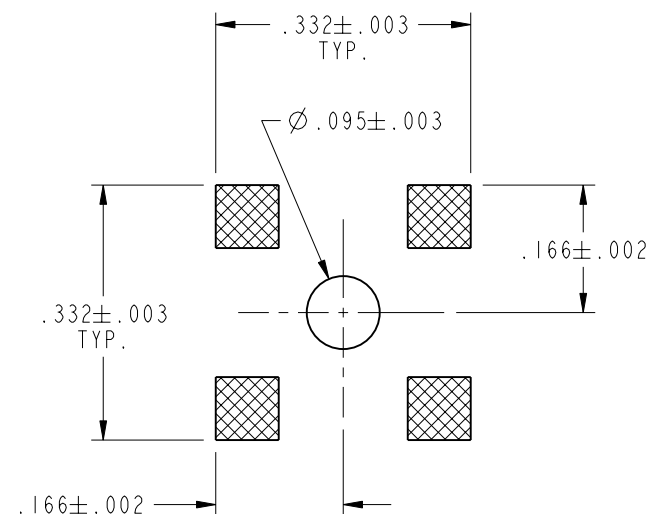
2. PHYSICAL:

A. OPERATING TEMPERATURE = -65°C to +165°C
B. DURABILITY = 100 MATING CYCLES MINIMUM
C. INTERFACE = PROPRIETARY AFI INTERFACE
D. RADIAL FLOAT = $\pm .015$

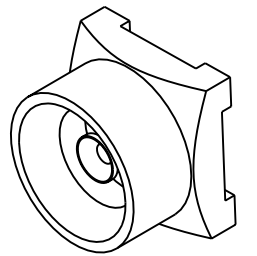
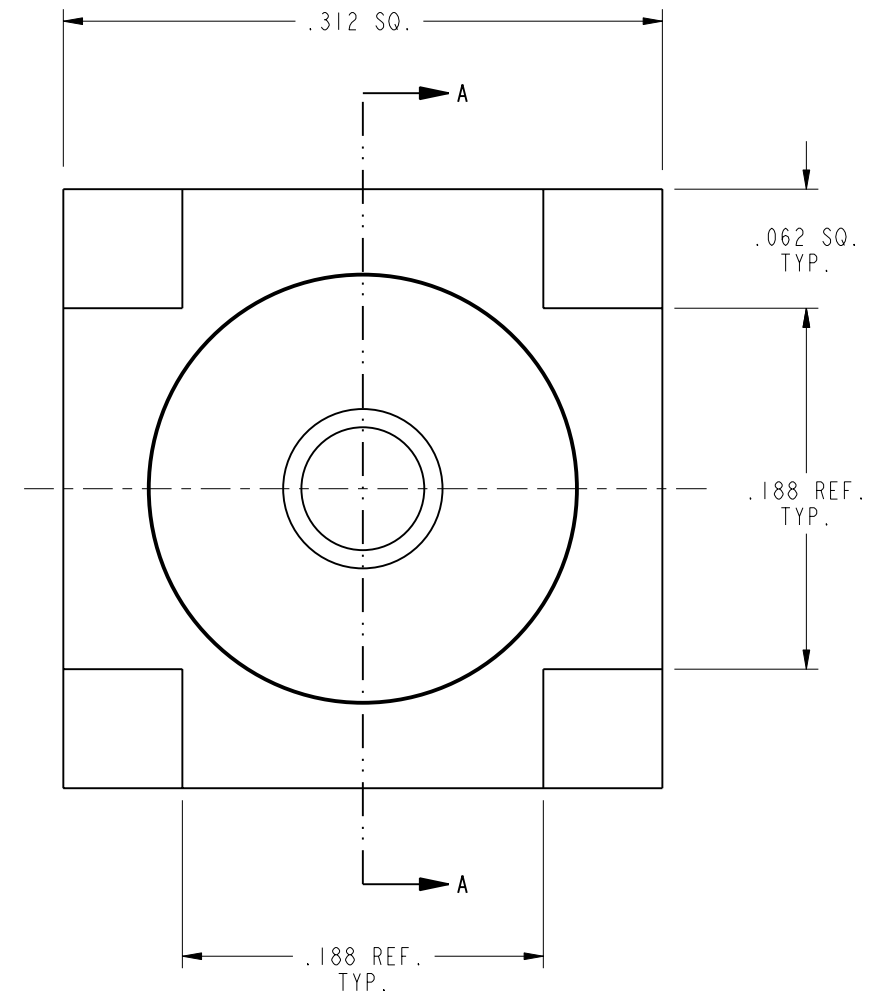
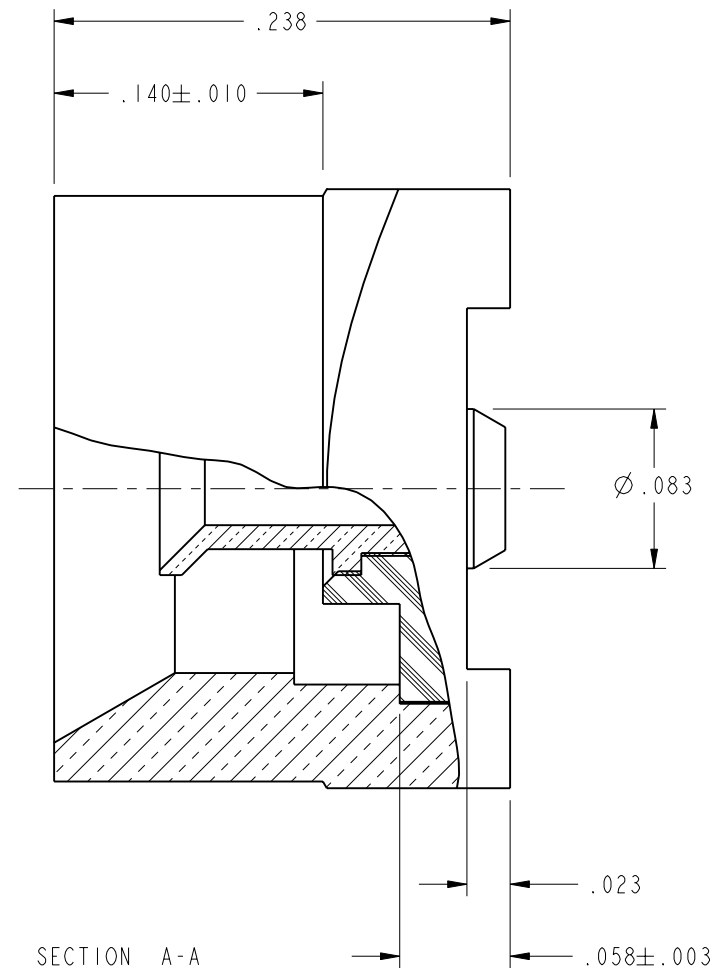
3. ELECTRICAL:

A. IMPEDANCE = 50 OHMS, NOMINAL
B. FREQUENCY RANGE = DC TO 6.0 GHz
C. RETURN LOSS = 25 dB MINIMUM

4. APPLICATION: SEE 349-50722 FOR ADDITIONAL INFORMATION REGARDING RECOMMENDED APPLICATION CONFIGURATION DETAIL.



RECOMMENDED
PCB LAYOUT
SCALE 5.000



SCALE 3.000

CUSTOMER OUTLINE DRAWING

ALL OTHER SHEETS ARE FOR INTERNAL USE ONLY

UNLESS OTHERWISE SPECIFIED, DIMENSIONS ARE IN INCHES AND TOLERANCES ARE: 2 PLACE DECIMAL 3 PLACE DECIMAL ANGLES ±.015 (0,381 mm) ±.005 (0,127 mm) ± 1°	MATERIAL B.C. GLEISSNER	DRAWN B.C. GLEISSNER	DATE 11-Aug-04	TITLE AFI-50 JACK, SURFACE MOUNT, FULL DETENT			Amphenol RF Danbury, CT, USA Tainan, Taiwan Shenzhen, China www.amphenolrf.com					
NOTICE - These drawings, specifications, or other data (1) are, and remain the property of Amphenol Corp. (2) must be returned upon request; and (3) are confidential and not to be disclosed to any person other than those to whom they are given by Amphenol Corp. The furnishing of these drawings, specifications, or other data by Amphenol Corp., or to any other person to anyone for any purpose is not to be regarded by implication or otherwise in any manner licensing, granting rights or permitting such holder or any other person to manufacture, use or sell any product, process or design, patented or otherwise, that may in any way be related to or disclosed by said drawings, specifications, or other data.	REFERENCE 615X-1876-200	ENGINEER B.C. GLEISSNER	DATE 17-Jan-03							SCALE: 10.0:1	SHEET	2 OF 2
	EAR# 837 GEN# ASSYFI7-AFI	APPROVED O. BARTHELMES	DATE 8/26/04							CAD FILE I:\AFI\920-161J-51P	CODE ID 74868	DWG SIZE B