

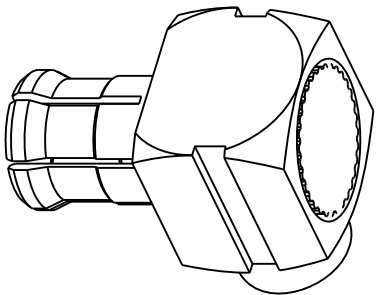
NOTES:

1. MATERIALS OF CONSTRUCTION:
HOUSING = BRASS, GOLD PLATED (.000003 MIN THICK)
BODY = BERYLLIUM COPPER, GOLD PLATED (.000003 MIN THICK)
CONTACT PIN = BRASS, GOLD PLATED (.000030 MIN THICK)
COVER = BRASS, GOLD PLATED (.000003 MIN THICK)
INSULATOR = TEFLON PER MIL-P-19468
INSULATOR = DELRIN, COLOR NATURAL
2. ELECTRICAL DATA:
VSWR = 1.05 MAX TO 1 GHz
1.30 MAX TO 6 GHz
INSERTION LOSS = .05 dB MAX TO 1 GHz
(MATED PAIR) = .15 dB MAX TO 6 GHz
3. CONTACT AND FRONT INSULATOR WITHSTANDS 2.3 LBS AXIAL FORCE
IN BOTH DIRECTIONS BEFORE ASSEMBLING REAR INSULATOR AND CAP.
4. CABLE ASSEMBLY INSTRUCTIONS:
A. TRIM CABLE AS SHOWN
B. INSERT CABLE INTO BODY UNTIL IT BOTTOMS
C. SOLDER CABLE OUTER CONDUCTOR TO BODY
D. SOLDER CABLE CENTER CONDUCTOR TO CONTACT, THE SOLDER
MUST NOT PROTRUDE ABOVE THE CENTER CONTACT END SURFACE
E. ORIENT REAR INSULATOR SLOT WITH CABLE DIELECTRIC AND INSERT TO DIMENSION SHOWN
F. INSERT CAP UNTIL FLUSH WITH SURFACE OF BODY, INSERTION TOOLING
MUST ENSURE THAT CAP SURFACE IS PARALLEL TO BODY SURFACE
5. PACKAGING:
A. BULK PACK AS FOLLLOWS:
100 PCS (CONNECTORS) PER BAG,
100 PCS (REAR INSUTLATOR) PER BAG
100 PCS (CAP) PER BAG
ALL 3 BAGS INTO 1 BAG
B. MARK BAG OR TAG "919-177P-71AX YYWW"

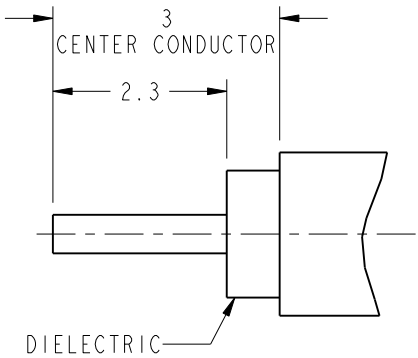
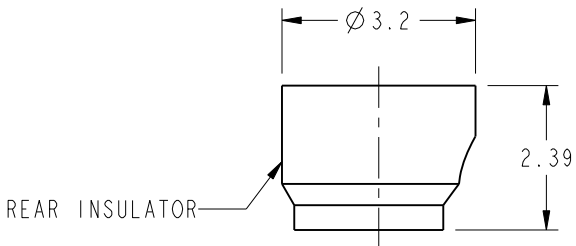
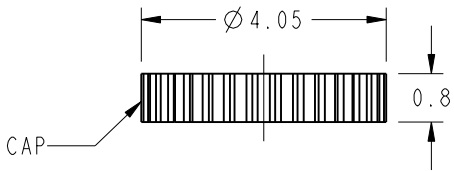
THIRD ANGLE PROJ.

REVISIONS

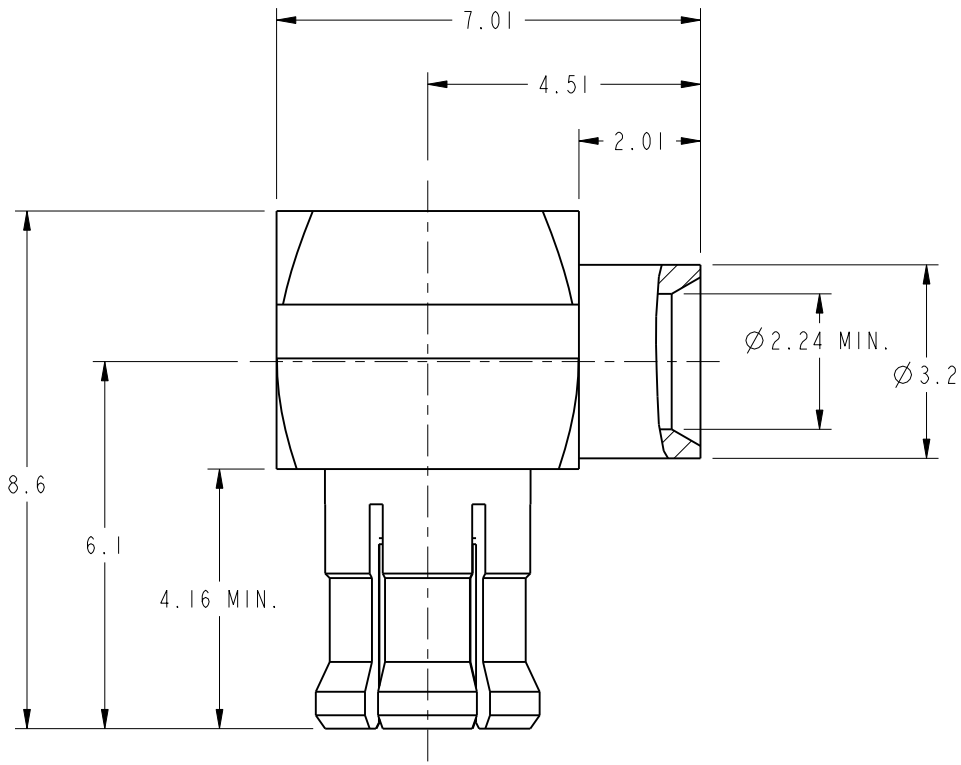
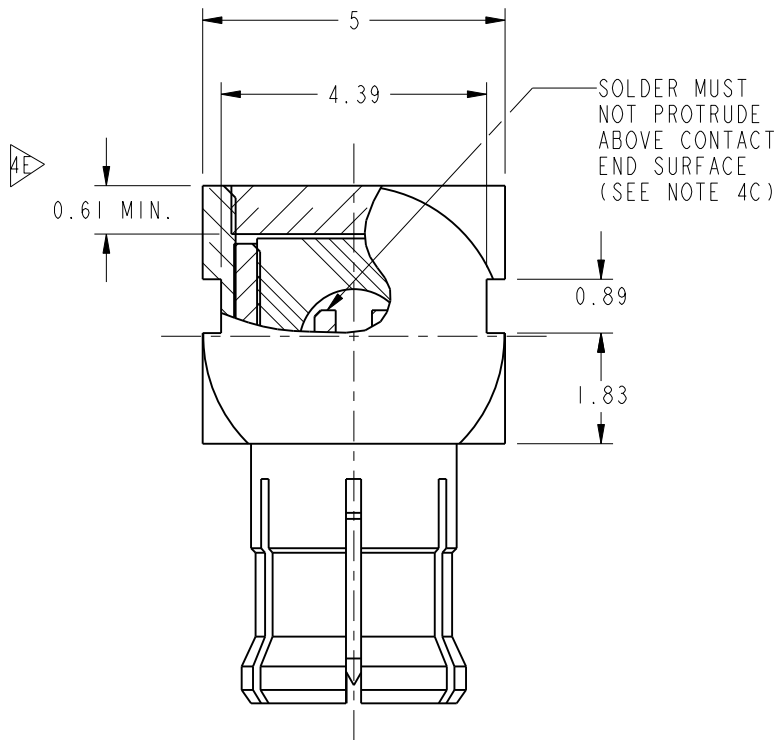
REV	DESCRIPTION	DATE	ECO	APPR
A	HOUSING WAS CHANGED	22-Sep-03	--	SHALY
B	BODY AND INSULATOR WERE CHANGED	04-Jan-06	--	SH
C	INSULATOR WAS CHANGED	11-Jan-08	--	AW
D	BODY WAS CHANGED	7/15/09	--	SH
E	UPDATED DRAWING TO SYNC	13-Dec-10	48371	CPM
F	0.89 WAS 0.9, 1.83 WAS 2	21-Jun-12	49130	SH



SCALE 5.000



RECOMMENDED
CABLE STRIPPING DIM'S
SCALE 10.000



CUSTOMER OUTLINE DRAWING

ALL OTHER SHEETS ARE FOR INTERNAL USE ONLY

UNLESS OTHERWISE SPECIFIED, DIMENSIONS ARE IN METRIC AND TOLERANCES ARE: <0.5mm ± 0.05mm 0.5 - 6mm ±0.1mm 6 - 30mm ±0.2mm 30 - 120mm ± 0.3mm ANGLES ±1°	MATERIAL -	DRAWN T.DENG	DATE 21-Jun-12	TITLE MCX R/A DIRECT SOLDER PLUG 75 OHM (FOR .085", .086") SCALE: 8.0:1.0 SHEET 2 OF 2	Amphenol RF www.amphenolrf.com
		ENGINEER S.LI	DATE 21-Jun-12		
		APPROVED S.HSIEH	DATE 21-Jun-12		
		CAD FILE			
		FINISH			
NOTICE - These drawings, specifications, or other data (1) are, and remain the property of Amphenol corp. (2) must be returned upon request; and (3) are confidential and not to be disclosed to any person other than those to whom they are given by Amphenol Corp. the furnishing of these drawings, specifications, or other data by Amphenol Corp., or to any other person to anyone for any purpose is not to be regarded by implication or otherwise in any manner licensing, granting rights to permitting such holder or any other person to manufacture, use or sell any product, process or design, patented or otherwise, that may in any way be related to or disclosed by said drawings, specifications, or other data.	REFERENCE EAR# 927 GEN# ASSYM18_MCX 615X-1914-100			DRAWING NO.919-177P-71AX	ITEM NO. 919-177P-71AX