

NOTES:

1. MATERIALS & FINISHES:

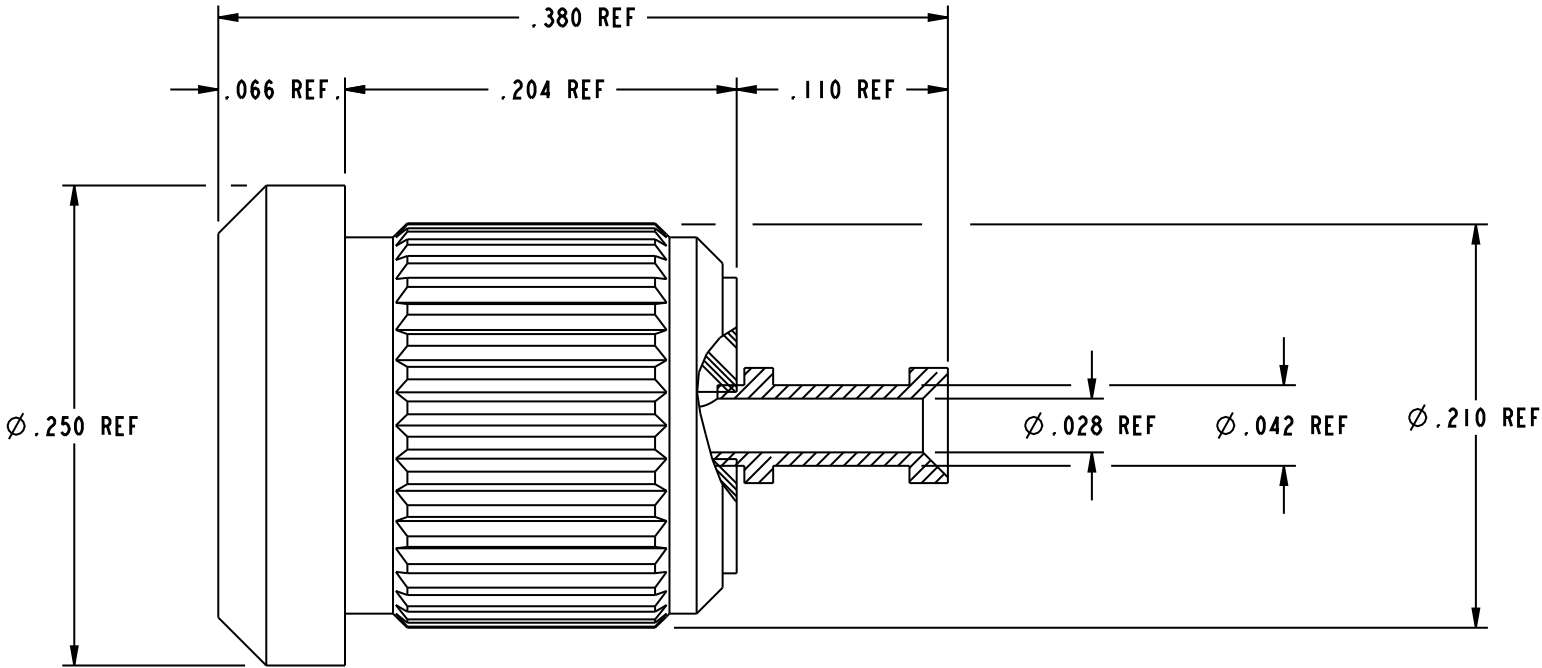
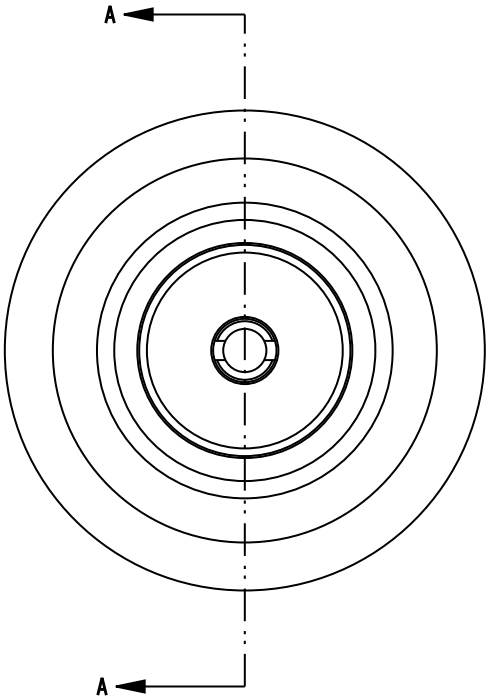
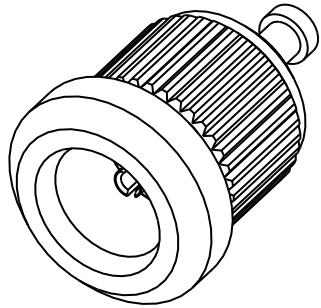
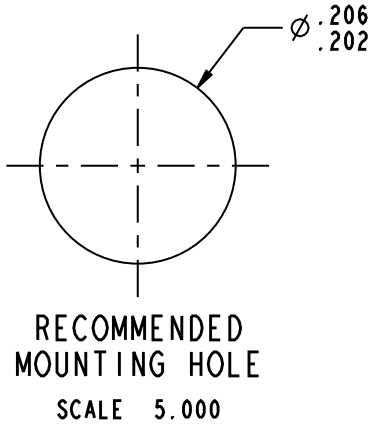
BODY - BRASS, GOLD PLATED
CONTACT - BERYLLIUM COPPER, GOLD PLATED
INSULATOR - PTFE

2. ELECTRICAL:

A. FREQUENCY RANGE = DC TO 6.0 GHz
B. V.S.W.R. = 1.100 @ 2.5 GHz
C. D.W.V. = 1,000 VRMS MIN.
D. INSULATION RESISTANCE = 5,000 MEGOHMS MIN.

3. PHYSICAL:

A. TEMPERATURE RANGE = -65°C TO +165°C
B. DURABILITY = 500 MATING CYCLES MIN.



SECTION A-A

CUSTOMER OUTLINE DRAWING

ALL OTHER SHEETS ARE FOR INTERNAL USE ONLY

UNLESS OTHERWISE SPECIFIED, DIMENSIONS ARE IN INCHES AND TOLERANCES ARE: 2 PLACE DECIMAL 3 PLACE DECIMAL ANGLES ±.015 (0,381 mm) ±.005 (0,127 mm) ± 1°	MATERIAL	DRAWN B.C. GLEISSNER	DATE 06-Dec-01	TITLE 75 OHM MCX PRESS FIT BULKHEAD RECEPTACLE		Amphenol RF Danbury, CT, USA Tainan, Taiwan Shenzhen, China www.amphenolrf.com	
		ENGINEER G. ANTONINI	DATE 12-Feb-01				
NOTICE - These drawings, specifications, or other data (1) are, and remain the property of Amphenol Corp. (2) must be returned upon request; and (3) are confidential and not to be disclosed to any person other than those to whom they are given by Amphenol Corp. The furnishing of these drawings, specifications, or other data by Amphenol Corp., or to any other person to anyone for any purpose is not to be regarded by implication or otherwise in any manner licensing, granting rights or permitting such holder or any other person to manufacture, use or sell any product, process or design, patented or otherwise, that may in any way be related to or disclosed by said drawings, specifications, or other data.	REFERENCE REPLACES 919-156A-71S GEN# ASSYF16-MCX 615X-1667 EAR# 401	APPROVED O. BARTHELMES	DATE 7/18/02	SCALE: 10.0:1 SHEET 2 OF 2			
		CAD FILE Root Folder/MCX/919-164A-71S					