

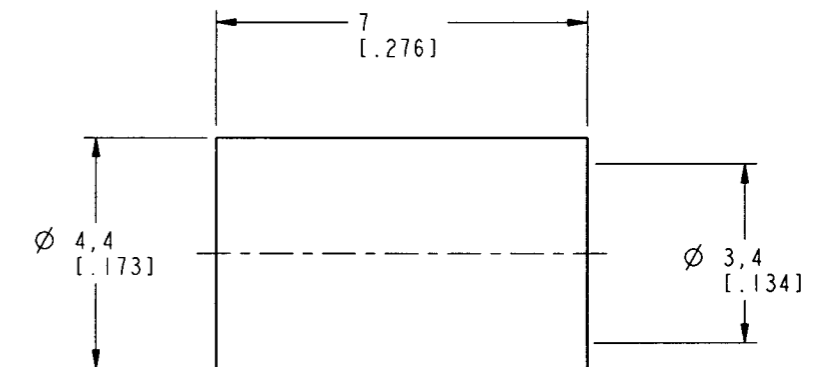
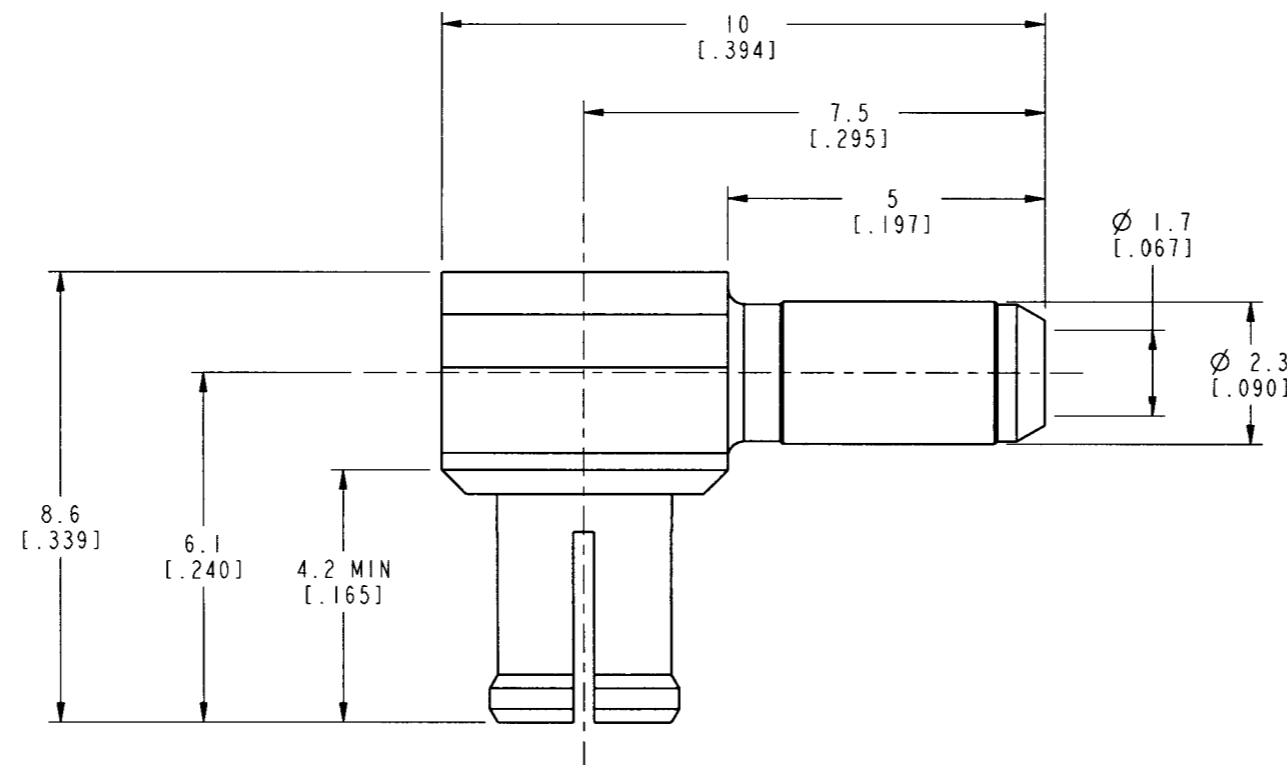
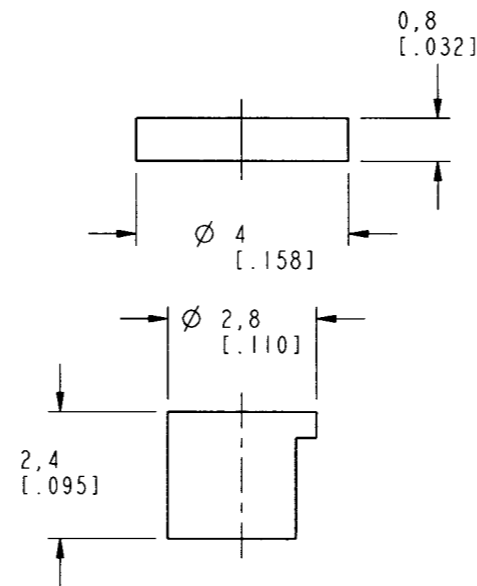
NOTES:

- MATERIALS OF CONSTRUCTION:
HOUSING AND CONTACT PIN = BRASS (QQ-B-626), GOLD PLATED
OUTER CONTACT = BERYLLIUM COPPER, GOLD PLATED
FERRULE = COPPER, GOLD PLATED
COVER = BRASS (QQ-B-613), GOLD PLATED
INSULATOR = TEFLON PER MIL-P-19468
INSULATOR = DELRIN, COLOR NATURAL
- CRIMPED FERRULE = HEX CRIMP SIZE .151
- ELECTRICAL DATA:
VSWR = 1.05 MAX TO 1 GHz
1.30 MAX TO 6 GHz
INSERTION LOSS = .05 dB MAX TO 1 GHz
(MATED PAIR) = .15 dB MAX TO 6 GHz

919-136P-71A2X

REVISIONS

DRAWING NO.	REV	DESCRIPTION	DATE	ECO	APPR
THIRD ANGLE PROJ.	A	RELEASE TO MFG.	6/6/00	43389	CPM



CUSTOMER OUTLINE DRAWING
FOR REFERENCE ONLY

RECOMMENDED CABLE
STRIPPING DIMENSIONS
SCALE 2.000

UNLESS OTHERWISE SPECIFIED, DIMENSIONS ARE IN INCHES AND TOLERANCES ARE:
0.5 - 6mm ±0.2mm
6 - 30mm ±0.4mm
30 - 120mm ±0.6mm

NOTICE - These drawings, specifications, or other data (1) are, and remain the property of Amphenol Corp. (2) must be returned upon request; and (3) are confidential and not to be disclosed to any person other than those to whom they are given by Amphenol Corp. The furnishing of these drawings, specifications, or other data by Amphenol Corp., or to any other person to anyone for any purpose is not to be regarded by implication or otherwise in any manner licensing, granting rights or permitting such holder or any other person to manufacture, use or sell any product, process or design, patented or otherwise, that may in any way be related to or disclosed by said drawings, specifications, or other data.

MATERIAL

REFERENCE
GEN# 919-136P-71AX

DRAWN

C. McGRATH

DATE

22-May-00

ENGINEER

T. AUBIN

DATE

22-May-00

APPROVED

DATE

5/31/00

CAD FILE

I:\MCX\919-136P-71A2X

TITLE

MCX R/A
CRIMP PLUG
FOR RD-179/U

Amphenol

Amphenol Corporation
Communication and Network
Products Division
Danbury, CT U.S.A. 06810

SCALE: 7.0:1 SHEET 2 OF 2

CODE ID

74868

DWG SIZE

B

DRAWING NO.

919-136P-71A2X

REV

A