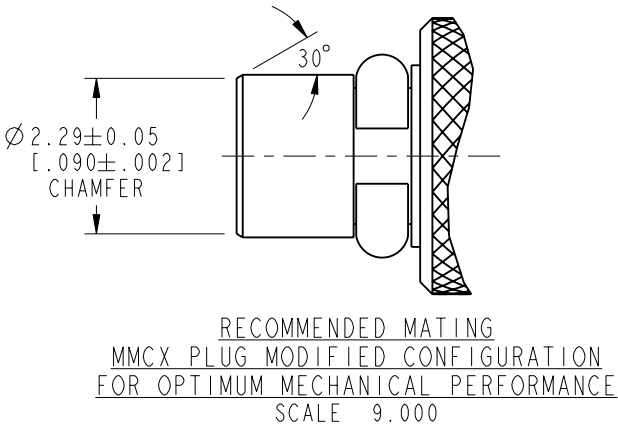
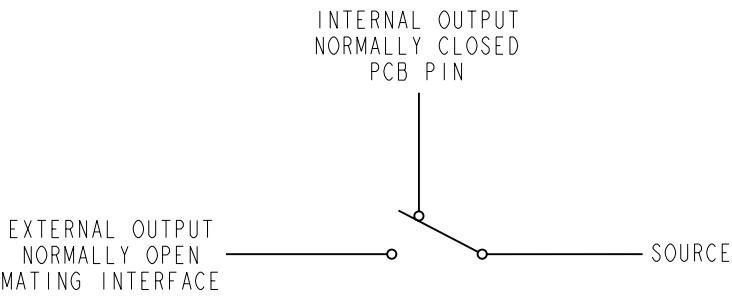
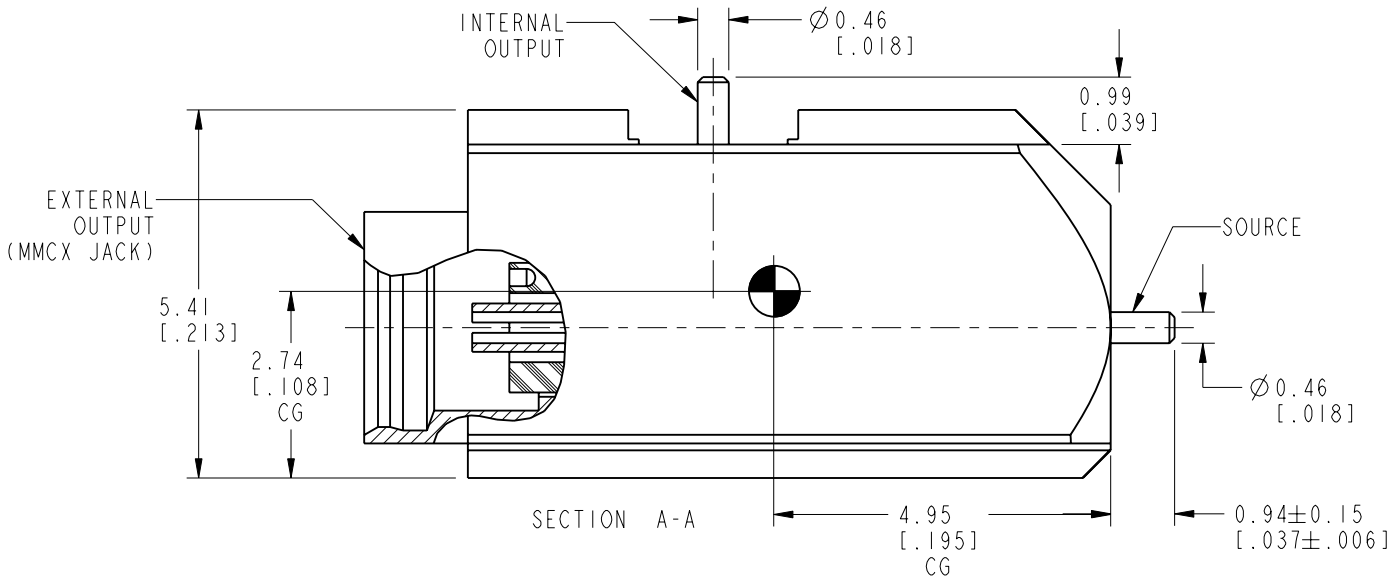
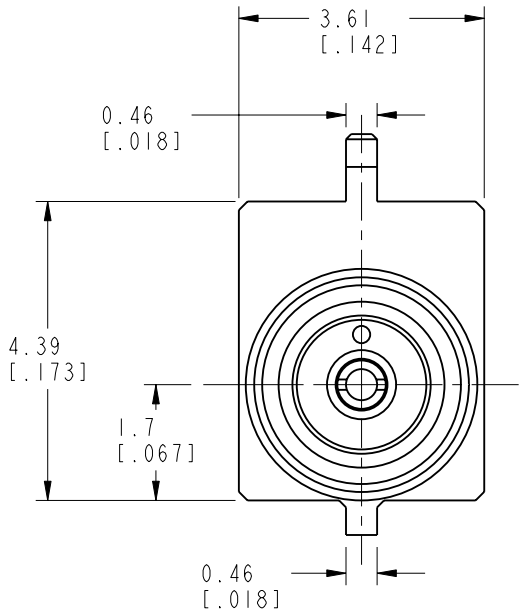
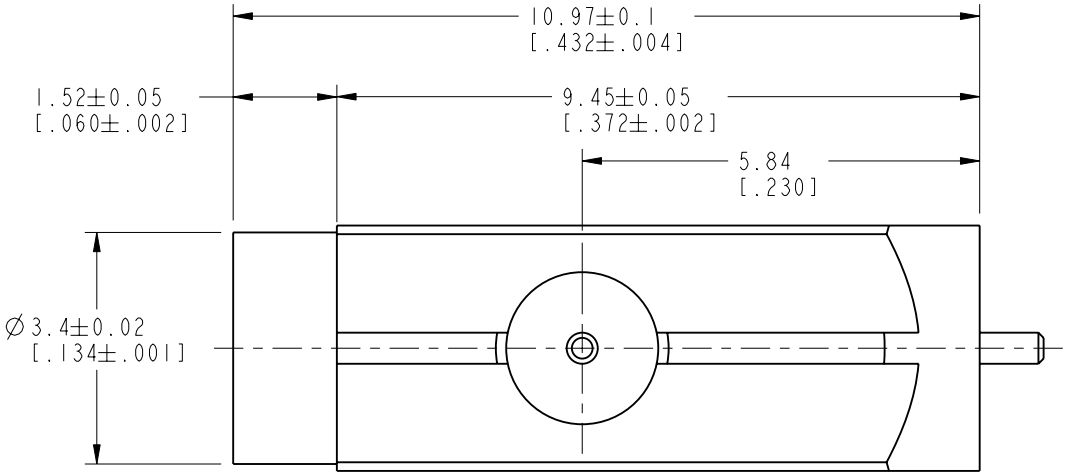
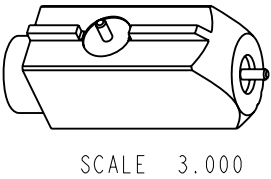


- NOTES:
1. MATERIALS AND FINISHES:  
BODY - BRASS, GOLD PLATING (.000010 MIN THICK)  
FEMALE CONTACT - BERYLLIUM COPPER, GOLD PLATING (.000030 MIN THICK)  
PIN CONTACT - PHOSPHOR BRONZE, GOLD PLATING (.000030 MIN THICK)  
OUTER CONTACT -BERYLLIUM COPPER, NICKEL PLATING (.000100 MIN THICK)  
INSULATORS - PTFE AND PEEK
2. ELECTRICAL:  
A. IMPEDANCE: 50 OHM  
B. FREQUENCY RANGE: DC - 3 GHz  
C. VSWR(RETURN LOSS): 1.4 (15.56 dB), MAX.  
D. DIELECTRIC WITHSTANDING VOLTAGE: 250 VRMS, MIN.
3. MECHANICAL:  
A. DURABILITY OF SWITCHING MECHANISM: 1500 CYCLES MIN.  
B. TEMPERATURE RANGE: -40° C TO 110° C  
C. INSERTION AND WITHDRAWEL FORCES:  
INSERTION FORCE: LESS THAN OR EQUAL TO 3.4 LBS  
WITHDRAWEL FORCE: 1.8 LBS MIN AT FIRST CYCLE  
.8 LBS AVERAGE AFTER 1500 CYCLES
4. PACKAGING:  
A. TAPE AND REEL (SEE SHEET 3 FOR DIMENSIONED DRAWING)  
B. Ø330 MM REEL OR ENGINEERING APPROVED EQUIVALENT  
C. QUANTITY: 1200 PCS PER REEL  
D. MARKING: REEL TO BE MARKED  
"AMPHENOL, 908-22111-L, AND DATE CODE"
5. CONNECTOR SUITABLE FOR LEAD-FREE SOLDER  
REFLOW PER 349-50712
6. THE MMCX INTERFACE MUST NOT BE MATED  
BEFORE SOLDERING TO BOARD
7. SEE SHEET 3 FOR PCB LAYOUT AND  
POCKET TAPE DIMENSIONS



THIRD ANGLE PROJ.		REVISIONS			
REV	DESCRIPTION	DATE	ECO	APPR	
A	RELEASE TO MFG.	12/13/04	45315	MAH	
B	1200 PCS PER REEL WAS 500	3/21/05	45380	MAH	
C	SYNCH DRAWING WITH RF	30-Oct-13	49667	TC	



SINGLE POLE DOUBLE THROW SWITCH

**CUSTOMER OUTLINE DRAWING**  
ALL OTHER SHEETS ARE FOR INTERNAL USE ONLY

<p>UNLESS OTHERWISE SPECIFIED, DIMENSIONS ARE IN METRIC AND TOLERANCES ARE: &lt;0.5mm ± 0.05mm    0.5 - 6mm ±0.1mm    6 - 30mm ±0.2mm    30 - 120mm ± 0.3mm    ANGLES ±1°</p> <p>NOTICE - These drawings, specifications, or other data (1) are, and remain the property of Amphenol corp. (2) must be returned upon request; and (3) are confidential and not to be disclosed to any person other than those to whom they are given by Amphenol Corp. the furnishing of these drawings, specifications, or other data by Amphenol Corp., or to any other person to anyone for any purpose is not to be regarded by implicatioin or otherwise in any manner licensing, granting rights to permitting such holder or any other sperson to manufacture, use or sell any product, process or design, patented or otherwsie, that may in any way be related to or disclosed by said drawings, specifications, or other data.</p>	MATERIAL -		DRAWN J. CHEN	DATE 30-Oct-13	TITLE MMCX JACK PCB AWICH LEFT HAND PCB CONFIG		Amphenol RF Danbury CT USA, Tainan, Taiwan, Shenzhen, China www.amphenolrf.com	
	REFERENCE EAR #1536    AND    615x-2105-100		ENGINEER M. HOYACK	DATE 22-Sep-04			DRAWING NO.908-22111-L	
	CONFIGURATION LEVEL:		APPROVED S. HSIEH	DATE 04-Nov-13	SCALE: 9.0:1.0	SHEET 2 OF 3	ITEM NO. 908-22111-L	
	FINISH		CAD FILE		DWG SIZE B	REV C	PART NO.908-22111-L	

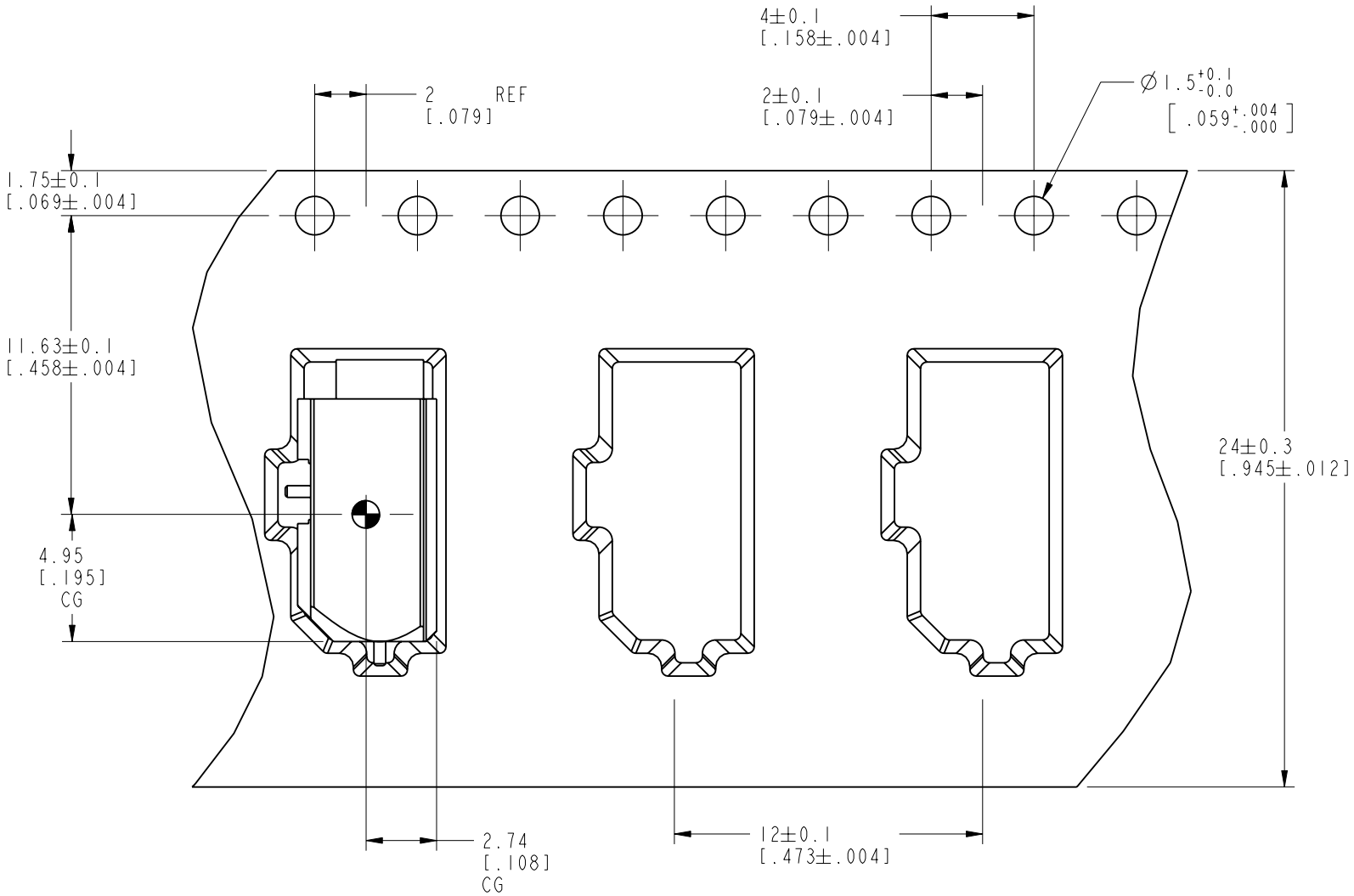
- NOTES:
- 1. SEE SHEET 2 FOR SWITCH INFO AND DRAWING
  - 2. PACKAGING:
    - A. TAPE AND REEL
    - B. Ø330 MM REEL OR ENGINEERING APPROVED EQUIVALENT
    - C. QUANTITY: 1200 PCS PER REEL
    - D. MARKING: REEL TO BE MARKED "AMPHENOL, 908-22111-L, AND DATE CODE"
  - 3. CONNECTOR SUITABLE FOR LEAD-FREE SOLDER REFLOW PER 349-50712
  - 4. THE MMCX INTERFACE MUST NOT BE MATED BEFORE SOLDERING TO BOARD

THIRD ANGLE PROJ.

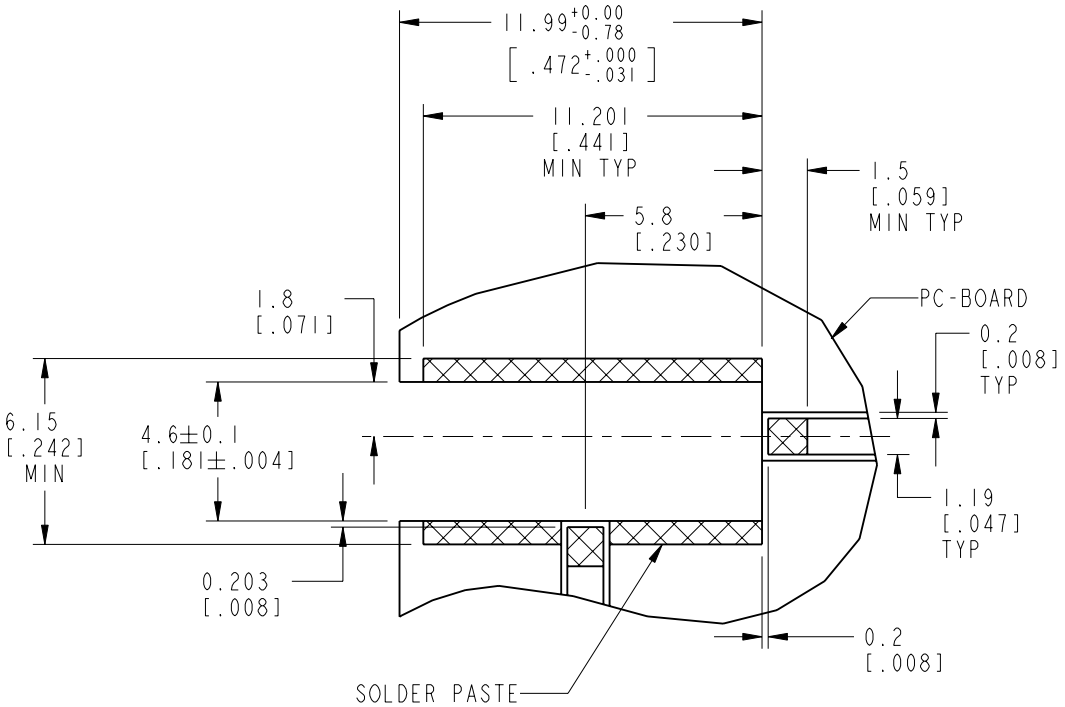
REVISIONS

REV	DESCRIPTION	DATE	ECO	APPR
A	RELEASE TO MFG.	12/13/04	45315	MAH
B	1200 PCS PER REEL WAS 500	3/21/05	45380	MAH
C	SYNCH DRAWING WITH RF	30-Oct-13	49667	TC

USER DIRECTION OF FEED



POCKET TAPE  
(LEFT HAND CONGIFURATION)



RECOMMENDED PCB LAYOUT  
LEFT HAND CONFIGURATION  
(COPLANAR WAVEGUIDE)  
SCALE 4.000

CUSTOMER OUTLINE DRAWING  
ALL OTHER SHEETS ARE FOR INTERNAL USE ONLY

UNLESS OTHERWISE SPECIFIED, DIMENSIONS ARE IN METRIC AND TOLERANCES ARE:  
<0.5mm 0.5 - 6mm 6 - 30mm 30 - 120mm ANGLES  
± 0.05mm ±0.1mm ±0.2mm ± 0.3mm ±1°

NOTICE - These drawings, specifications, or other data (1) are, and remain the property of Amphenol corp. (2) must be returned upon request; and (3) are confidential and not to be disclosed to any person other than those to whom they are given by Amphenol Corp. the furnishing of these drawings, specifications, or other data by Amphenol Corp., or to any other person to anyone for any purpose is not to be regarded by implicatioin or otherwise in any manner licensing, granting rights to permitting such holder or any other sperson to manufacture, use or sell any product, process or design, patented or otherwsie, that may in any way be related to or disclosed by said drawings, specifications, or other data.

MATERIAL	-
REFERENCE	EAR #1536 AND 615x-2105-100
CONFIGURATION LEVEL:	
FINISH	

DRAWN	J.CHEN	DATE	30-Oct-13
ENGINEER	M. HOYACK	DATE	22-Sep-04
APPROVED	S.HSIEH	DATE	04-Nov-13
CAD FILE			

TITLE	MMCX JACK PCB AWICH LEFT HAND PCB CONFIG
SCALE: 3.0:1.0	SHEET 3 OF 3
DWG SIZE	B
REV	C

Amphenol RF
Danbury CT USA, Tainan, Taiwan, Shenzhen, China www.amphenolrf.com
DRAWING NO.908-22111-L
ITEM NO.908-22111-L
PART NO.908-22111-L