

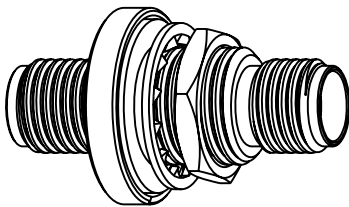
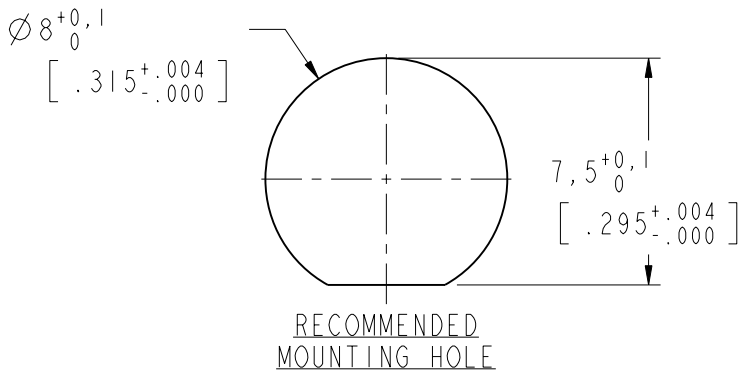
NOTES:

1. MATERIALS AND FINISHES:
HEX NUT -BRASS, GOLD PLATING
LOCK WASHER -BRASS, GOLD PLATING
BODY -BRASS, GOLD PLATING
CONTACT -BERYLLIUM COPPER, GOLD PLATING
GASKET -SILICONE RUBBER, GREY
O- RING -SILICONE RUBBER, RED
INSULATOR -PTFE, NATURAL
2. ELECTRICAL:
A. IMPEDANCE: 50 OHM
3. MECHANICAL:
A. DURABILITY: 500 CYCLES MIN.
B. TEMPERATURE RANGE: -65°C TO +165°C
C. SEALING REQUIREMENT: IP-68 MUST WITHSTAND 3' DEPTH OF WATER FOR ONE HOUR WITHOUT ANY SIGNS OF LEAKAGE
4. MAX. PANEL THICKNESS=4.3mm
5. GASKET NFORMATION:
A. MANUFACTURER: WUJIANG FLYUP RUBBER HITECH CO, LTD.
B. MATERIAL: SILICON, COMPOUND NO. 3FL25A01P
C. RATED TO UL 157

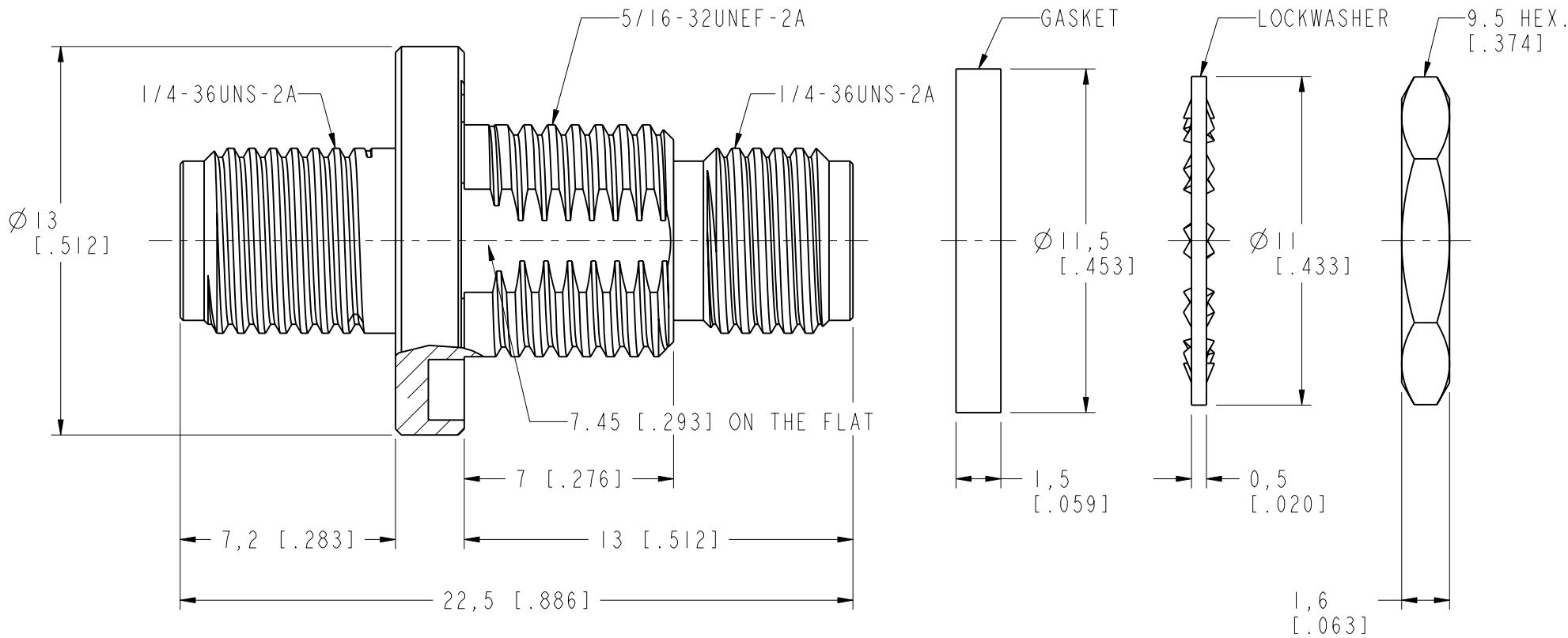
THIRD ANGLE PROJ.

REVISIONS

REV	DESCRIPTION	DATE	ECO	APPR
A	RELEASE TO MFG.	16-May-17	03782	SS



SCALE 2.000



AMPHENOL RF BOM

NS11AFV01	1	INSULTAOR
LW-11182X05	1	LOCKWASHER
HN95-5/16-32X16	1	HEX NUT
CP11AQN01	1	CONTACT PIN
BD11AYU01	1	BODY
930-10149	1	O-RING
901-8221	1	GASKET
PART NUMBER	QTY.	DESCRIPTION

CUSTOMER OUTLINE DRAWING
ALL OTHER SHEETS ARE FOR INTERNAL USE ONLY

UNLESS OTHERWISE SPECIFIED, DIMENSIONS ARE IN METRIC AND TOLERANCES ARE: <0.5mm ± 0.05mm 0.5 - 6mm ± 0.1mm 6 - 30mm ± 0.2mm 30 - 120mm ± 0.3mm ANGLES ± 1° NOTICE - These drawings, specifications, or other data (1) are, and remain the property of Amphenol corp. (2) must be returned upon request; and (3) are confidential and not to be disclosed to any person other than those to whom they are given by Amphenol Corp. the furnishing of these drawings, specifications, or other data by Amphenol Corp., or to any other person to anyone for any purpose is not to be regarded by implication or otherwise in any manner licensing, granting rights to permitting such holder or any other person to manufacture, use or sell any product, process or design, patented or otherwise, that may in any way be related to or disclosed by said drawings, specifications, or other data.	MATERIAL -	DRAWN K. SONG	DATE 18-May-17	TITLE SMA BULKHEAD JACK TO JACK ADAPTOR (IP 68) SCALE: 6.0:1.0 SHEET 2 OF 2 DWG SIZE B REV A	Amphenol RF www.amphenolrf.com DRAWING NO. 901-10559 ITEM NO. 901-10559 PART NO. 901-10559
	REFERENCE EAR# 7452 AND 132170-12 CONFIGURATION LEVEL: In Work	ENGINEER S. SEYAL	DATE 7-Oct-16		
	FINISH	APPROVED HARRY	DATE 18-May-17		
		CAD FILE			