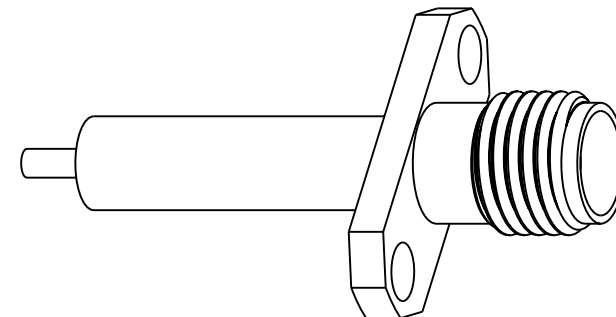


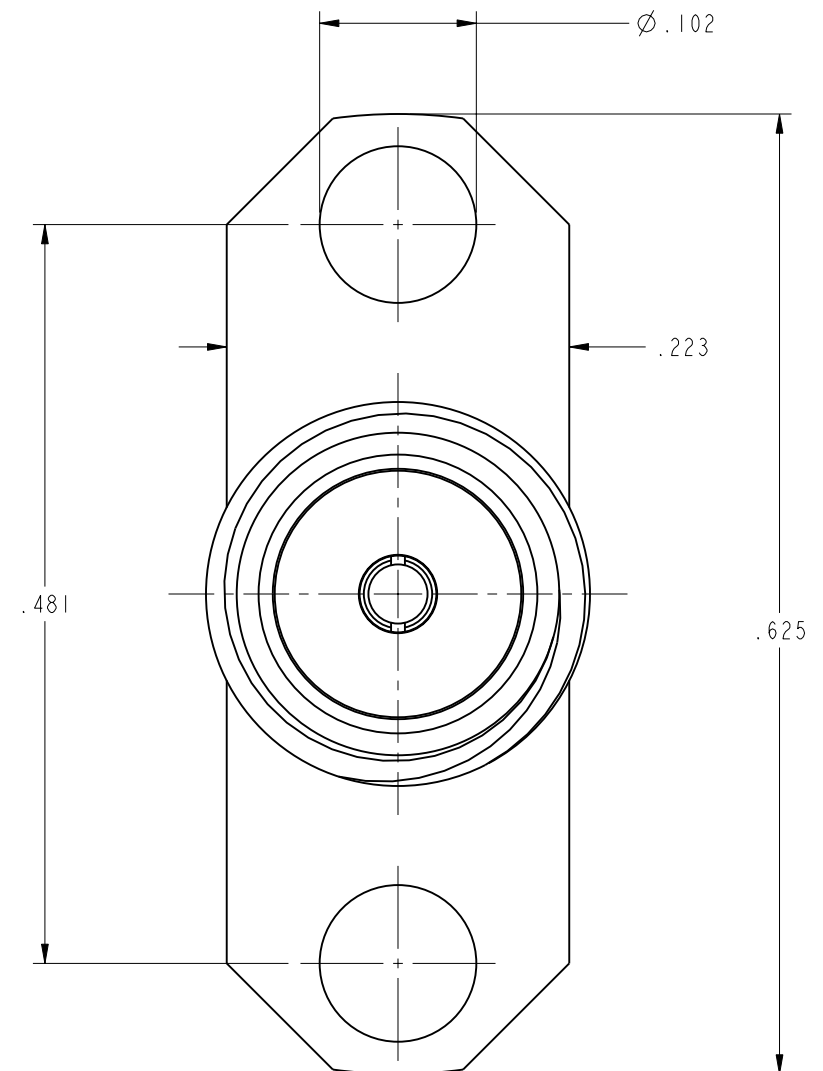
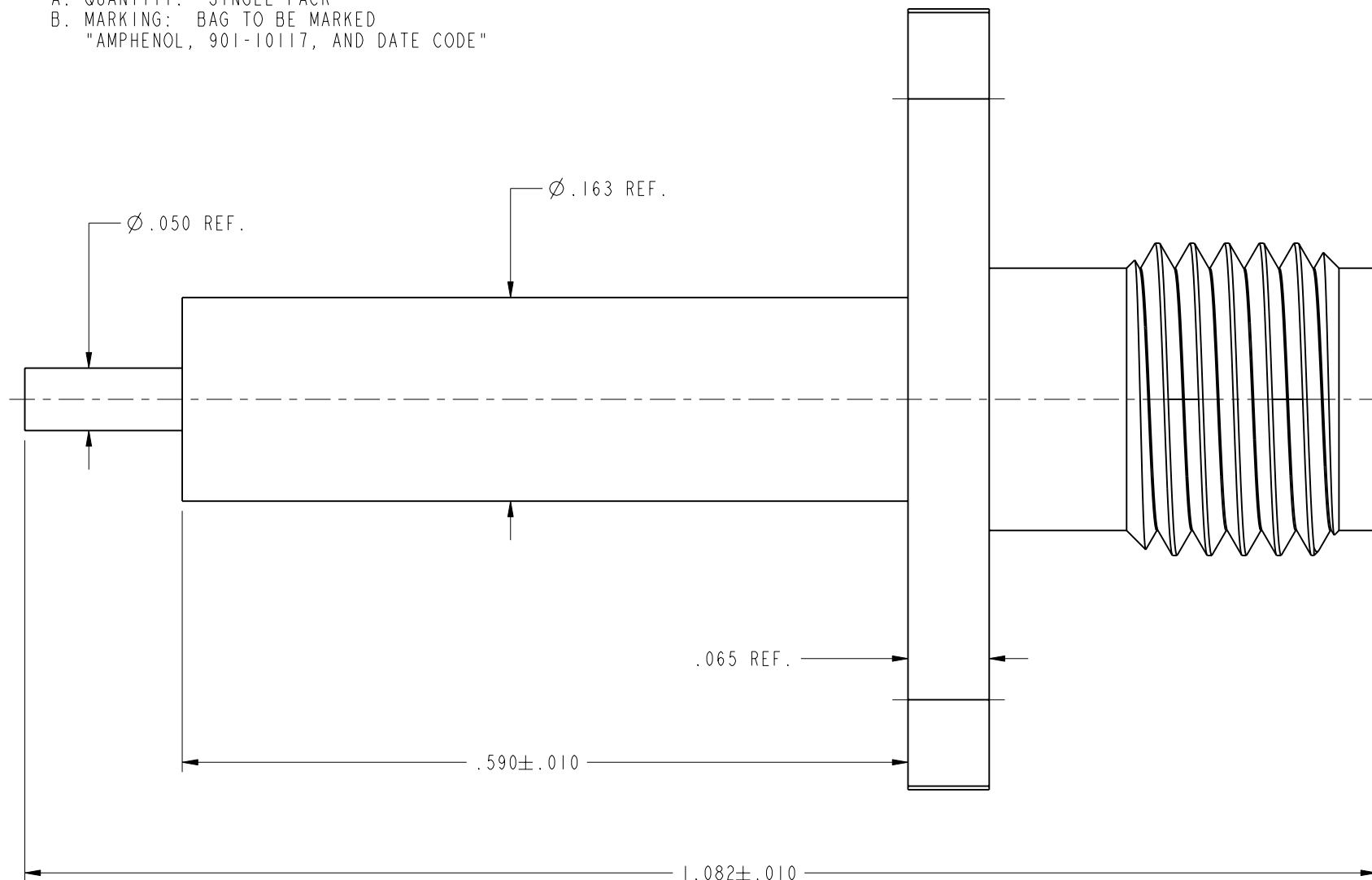
NOTES:

1. MATERIALS AND FINISHES:
BODY - STAINLESS STEEL, GOLD PLATING (.000010 THICK)
CONTACT - BeCu, GOLD PLATING (.000030 THICK)
INSULATOR - PTFE
2. ELECTRICAL:
A. IMPEDANCE: 50 OHM
B. FREQUENCY RANGE: DC - 18 GHz
C. VSWR(RETURN LOSS): 1.12 (25 dB) @ 2 GHz MAX.
D. DIELECTRIC WITHSTANDING VOLTAGE: 1000 VRMS, MIN.
3. MECHANICAL:
A. DURABILITY: 500 CYCLES MIN.
B. TEMPERATURE RANGE: -65° C TO 165° C
4. PACKAGING:
A. QUANTITY: SINGLE PACK
B. MARKING: BAG TO BE MARKED
"AMPHENOL, 901-10117, AND DATE CODE"

901-10117		REVISIONS				
DRAWING NO.	REV	DESCRIPTION	DATE	ECO	APPR	
THIRD ANGLE PROJ. 	A	RELEASE TO MFG.	8/28/03	44598		



SCALE 3.000



CUSTOMER OUTLINE DRAWING

ALL OTHER SHEETS ARE FOR INTERNAL USE ONLY

<div>UNLESS OTHERWISE SPECIFIED, DIMENSIONS ARE IN INCHES AND TOLERANCES ARE: 2 PLACE DECIMAL 3 PLACE DECIMAL ANGLES ±.015 (0,381 mm) ±.005 (0,127 mm) ± 1°</div> <div>NOTICE - These drawings, specifications, or other data (1) are, and remain the property of Amphenol Corp. (2) must be returned upon request; and (3) are confidential and not to be disclosed to any person other than those to whom they are given by Amphenol Corp. The furnishing of these drawings, specifications, or other data by Amphenol Corp., or to any other person to anyone for any purpose is not to be regarded by implication or otherwise in any manner licensing, granting rights or permitting such holder or any other person to manufacture, use or sell any product, process or design, patented or otherwise, that may in any way be related to or disclosed by said drawings, specifications, or other data.</div>	<div>MATERIAL</div> <div>REFERENCE EAR #1048 615X-1946-100 ASSYF66-SMA</div>	<div>DRAWN</div> <div>K. CAPOZZI</div>	<div>DATE</div> <div>08-Jul-03</div>	<div>TITLE</div> <div>SMA (F) 2-HOLE STAINLESS STEEL W/ ANTI-ROTATION CONTACT</div>				<div>Amphenol RF</div> <div>Danbury, CT, USA Tainan, Taiwan Shenzhen, China www.amphenolrf.com</div>			
		<div>ENGINEER</div> <div>K. CAPOZZI</div>	<div>DATE</div> <div>08-Jul-03</div>								
		<div>APPROVED</div> <div>O. BARTHELMES</div>	<div>DATE</div> <div>8/27/03</div>								
		<div>CAD FILE</div> <div>I:\SMA\901-10117</div>				<div>CODE ID</div> <div>74868</div>	<div>DWG SIZE</div> <div>B</div>	<div>DRAWING NO.</div> <div>901-10117</div>			<div>REV</div> <div>A</div>