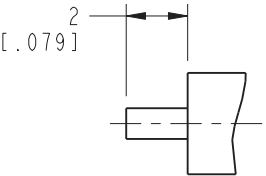
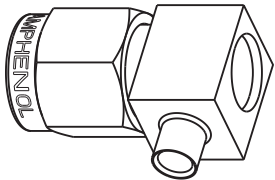
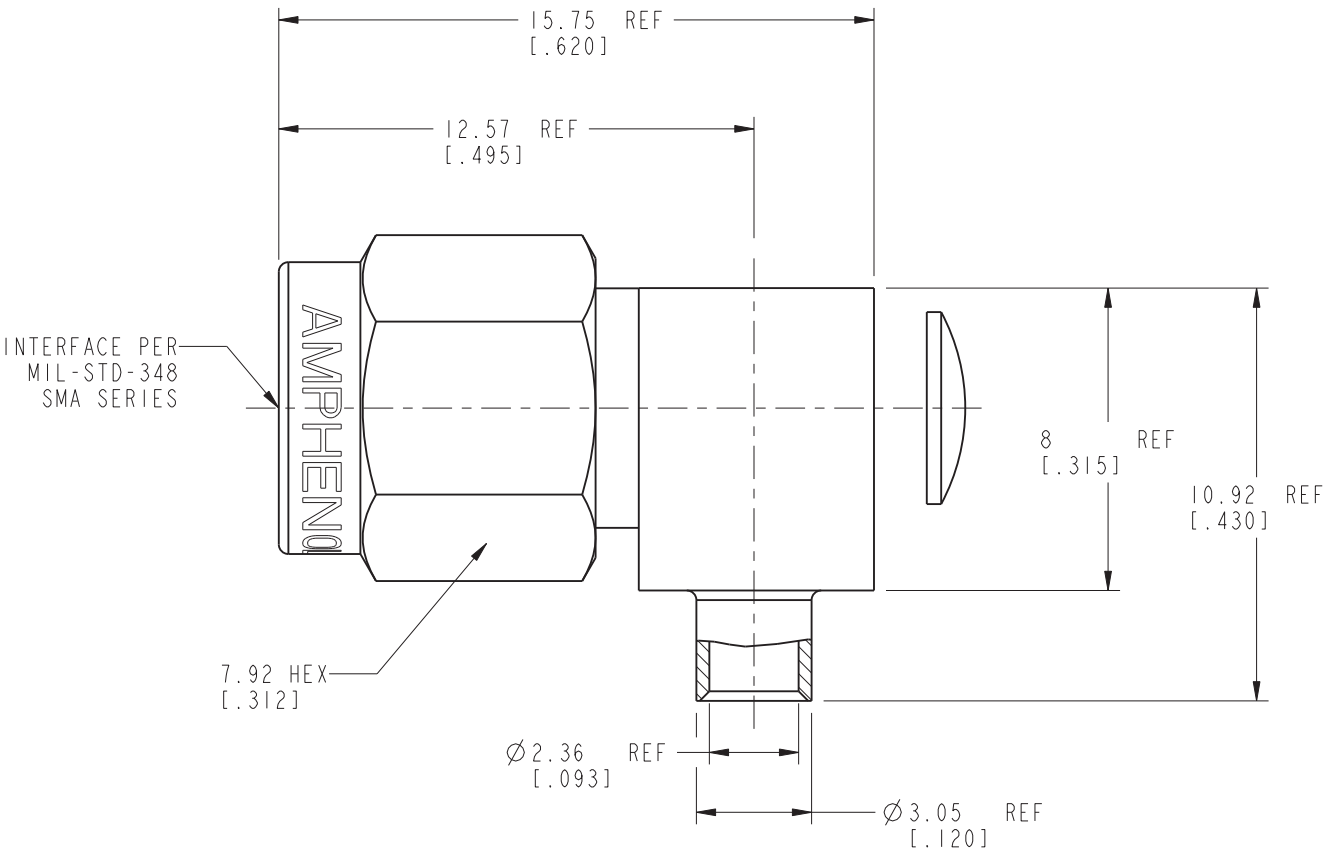


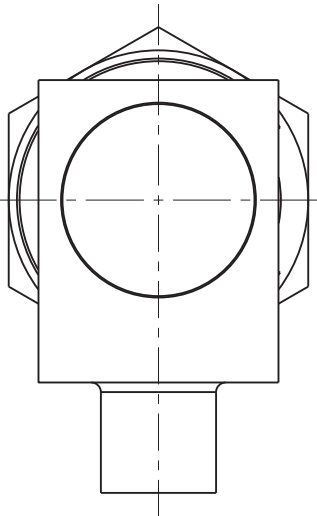
- NOTES:
- MATERIALS AND FINISHES(PLATING THICKNESS IN MICRO-INCHES):
BODY - BRASS, GOLD PLATING (.000010 THICK)
CONTACT - BRASS, GOLD PLATING (.000050 THICK)
COUPLING NUT - STAINLESS STEEL, PASSIVATED
INSULATOR - PTFE, NATURAL
 - ELECTRICAL:
A. IMPEDANCE: 50 OHM
B. FREQUENCY RANGE: DC - 6 GHz
C. RETURN LOSS: 25 dB
 - MECHANICAL:
A. DURABILITY: 500 CYCLES MIN.
B. TEMPERATURE RANGE: -65° C TO +165° C
 - PACKAGING:
A. QUANTITY: SINGLE PACK
B. MARKING: BAG TO BE MARKED
"AMPHENOL, 901-10053, AND DATE CODE"
 - TRIM CABLE AS SHOWN



SCALE 8.000
RECOMMENDED
CABLE STRIPPING DIM'S



SCALE 2.000



CUSTOMER OUTLINE DRAWING
ALL OTHER SHEETS ARE FOR INTERNAL USE ONLY

UNLESS OTHERWISE SPECIFIED, DIMENSIONS ARE IN METRIC AND TOLERANCES ARE: <0.5mm ± 0.05mm 0.5 - 6mm ±0.1mm 6 - 30mm ±0.2mm 30 - 120mm ± 0.3mm ANGLES ±1°	MATERIAL	DRAWN T. DENG	DATE 04-Sep-11	TITLE SMA, RA PLUG CABLE RG-405 OR .086" CONF.		Amphenol RF www.amphenolrf.com	
		ENGINEER M. HOYACK	DATE 12-Jul-00				
NOTICE - These drawings, specifications, or other data (1) are, and remain the property of Amphenol corp. (2) must be returned upon request; and (3) are confidential and not to be disclosed to any person other than those to whom they are given by Amphenol Corp. the furnishing of these drawings, specifications, or other data by Amphenol Corp., or to any other person to anyone for any purpose is not to be regarded by implication or otherwise in any manner licensing, granting rights to permitting such holder or any other person to manufacture, use or sell any product, process or design, patented or otherwise, that may in any way be related to or disclosed by said drawings, specifications, or other data.	REFERENCE EAR# 461 GEN# ASSYM27.SMA 615X-1753-100 CONFIGURATION LEVEL:	APPROVED S. HSIEH	DATE 05-Sep-11	SCALE: 5.0:1.0 SHEET 2 OF 2		DRAWING NO. 901-10053	
	FINISH	CAD FILE		DWG SIZE B		REV C	ITEM NO. 901-10053
							PART NO.901-10053