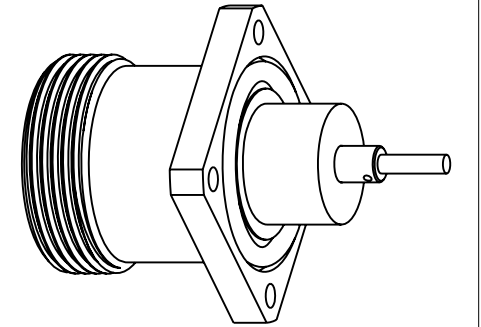


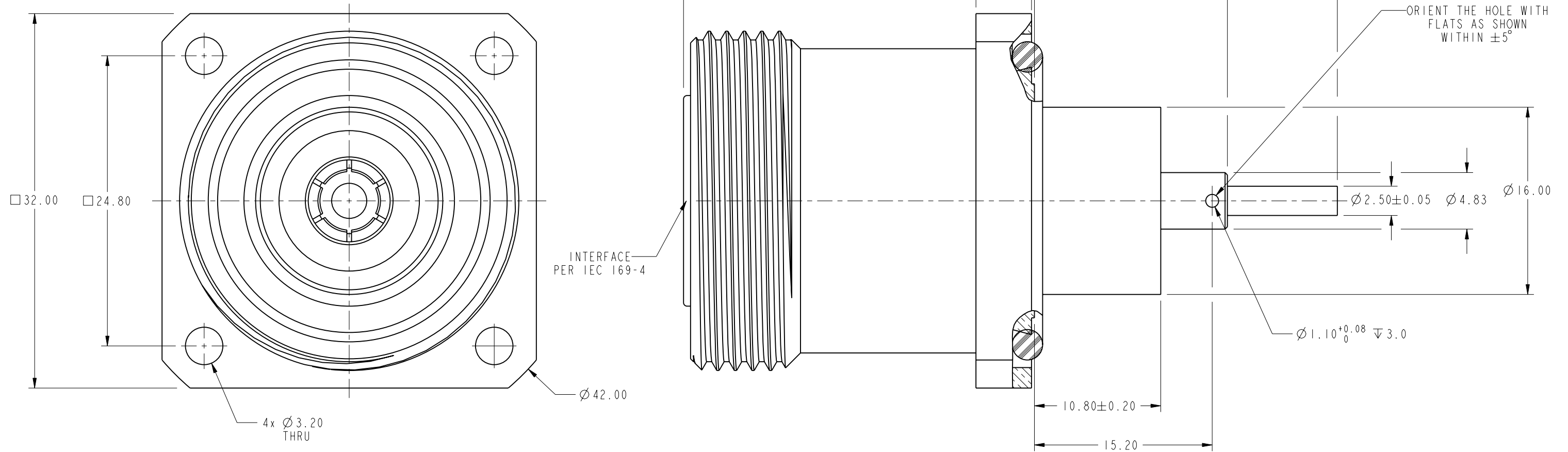
1. MATERIALS AND FINISHES:
 - BODY - BRASS, COPPER-TIN-ZINC PLATING (2 μ m MIN THICK)
 - CONTACT - PHOSPHOROUS BRONZE, SILVER PLATING (5 μ m THICK)
 - INSULATOR- PTFE
 - O-RING -SILICONE RUBBER.
2. ELECTRICAL:
 - A. IMPEDANCE: 50 OHM
 - B. FREQUENCY RANGE: DC - 3 GHz
 - C. VSWR: 1.2 MAX FROM .8 GHz - 2.2 GHz.
 - D. -125dBm 3RD ORDER PIM W/(2) +43 dBm TONES
3. MECHANICAL:
 - A. DURABILITY: 500 CYCLES MIN.
 - B. TEMPERATURE RANGE: -55° C TO 155° C
 - C. ENVIRONMENTAL SEALING PER IP68,MATED AND UNMATED.
 - D. CENTER CONTACT RETENTION:
 - AXIAL RETENTION: 200 N MIN.
 - RADIAL FORCE: .02N-M MIN.
4. PACKAGING:
 - A. QUANTITY: SINGLE PACK
 - B. MARKING: BAG TO BE MARKED
 - "I35-0018-01,WWYY
 - AMPHENOLRF,716-200"
 - C. INTERFACE SHALL BE COVERED WITH PROTECTIVE CAP

REVISIONS

REV	DESCRIPTION	DATE	ECO	APPR
A	RELEASE TO MFG.	7/31/07	46687	NMV



SCALE 1.000



METRIC DRAWING

CUSTOMER OUTLINE DRAWING

ALL OTHER SHEETS ARE FOR INTERNAL USE ONLY

UNLESS OTHERWISE SPECIFIED, DIMENSIONS ARE METRIC AND TOLERANCES ARE: 1 PLACE DECIMAL 2 PLACE DECIMAL ANGLES $\pm 0.3\text{MM}$ (.012") $\pm .10\text{ MM}$ (.004") $\pm 1^\circ$ NOTICE - These drawings, specifications, or other data (1) are, and remain the property of Amphenol corp., (2) must be returned upon request; and (3) are confidential and not to be disclosed to any person other than those to whom they are given by Amphenol Corp., the furnishing of these drawings, specifications, or other data by Amphenol Corp., or to any other person to anyone for any purpose is not to be regarded by implication or otherwise in any manner licensing, granting rights to permitting such holder or any other person to manufacture, use or sell any product, process or design, patented or otherwise, that may in any way be related to or disclosed by said drawings, specifications, or other data.	MATERIAL SEE NOTES	DRAWN NISCHIT MV DATE 28-Jun-07	TITLE ASSEMBLY 7/16, JACK			Amphenol RF Danbury CT USA, Tainan, Taiwan, Shenzhen, China www.amphenolrf.com		
		ENGINEER NISCHIT MV DATE 28-Jun-07				DRAWING NO.		
		REFERENCE EAR # 2440 AND 611X-4314-100 CONFIGURATION LEVEL:Release.	APPROVED O. BARTHELMES DATE 7/31/07	SCALE: 3.0:1.0	SHEET 2 OF 2	ITEM NO.		
		FINISH	CAD FILE I:\Root Folder\716\716-200	DWG SIZE B	CODE ID 74868	REV A	PART NO. 716-200	