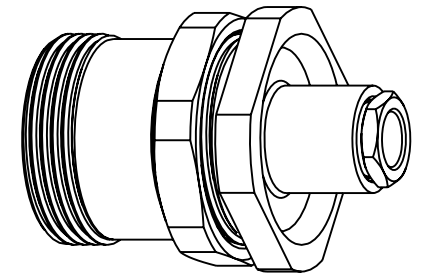


1. MATERIALS AND FINISHES:
BODY, HEX NUT, BACK NUT - BRASS, SILVER PLATING
INSULATOR- PTFE
2. PACKAGING:
 - A. QUANTITY: SINGLE PACK
 - B. MARKING: BAG TO BE MARKED
"AMPHENOL, 716-202, AND DATE CODE"

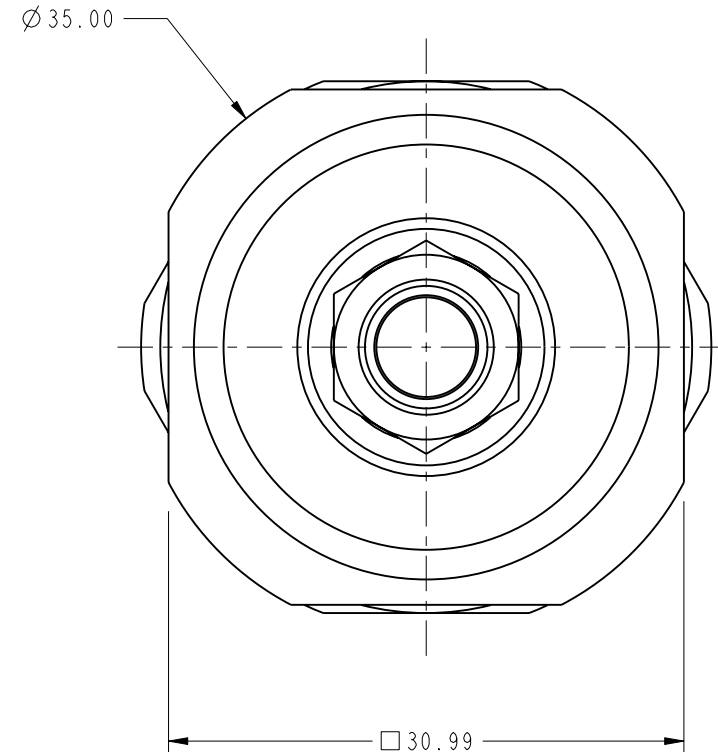
REVISIONS

REV	DESCRIPTION	DATE	ECO	APPR
A	RELEASE TO MFG.	3/11/08	46846	NMV



Exploded view diagram of a cable gland assembly. The diagram shows the following components and callouts:

- INTERFACE PER CECC-22190 IEC169-4**: Points to the cable gland body.
- M29 X 1.5 THREAD**: Points to the threaded section of the cable gland body.
- 32 MM HEX NUT**: Points to the hexagonal nut.
- 7/16" (11MM) HEX. BACK NUT**: Points to the hexagonal back nut.



METRIC DRAWING

CUSTOMER OUTLINE DRAWING

ALL OTHER SHEETS ARE FOR INTERNAL USE ONLY

UNLESS OTHERWISE SPECIFIED, DIMENSIONS ARE METRIC AND TOLERANCES ARE: 1 PLACE DECIMAL ± 0.3MM (.012") 2 PLACE DECIMAL ± .10 MM (.004") ANGLES ± 1° NOTICE - These drawings, specifications, or other data (1) are, and remain the property of Amphenol corp. (2) must be returned upon request; and (3) are confidential and not to be disclosed to any person other than those to whom they are given by Amphenol Corp. the furnishing of these drawings, specifications, or other data by Amphenol Corp., or to any other person to anyone for any purpose is not to be regarded by implication or otherwise in any manner licensing, granting rights to permitting such holder or any other sperson to manufacture, use or sell any product, process or design, patented or otherwsie, that may in any way be related to or disclosed by said drawings, specifications, or other data.	MATERIAL SEE NOTES.	DRAWN NAVEEN HN	DATE 20-Jul-07	TITLE ASSEMBLY, 7/16, JACK FOR S/R .250" AND .141"			Amphenol RF Danbury CT USA, Tainan, Taiwan, Shenzhen, China www.amphenolrf.com	
		ENGINEER NAVEEN HN	DATE 20-Jul-07				DRAWING NO.	
	REFERENCE EAR #1885 AND 611X-4318-100	APPROVED H. PARIKH	DATE 3/11/08	SCALE: 2.2:1.0	SHEET 2 OF 2	ITEM NO.		
	CONFIGURATION LEVEL: Release	CAD FILE Root Folder/716/716-202	DWG SIZE B	CODE ID 74868	REV A	PART NO. 716-202		
	FINISH							