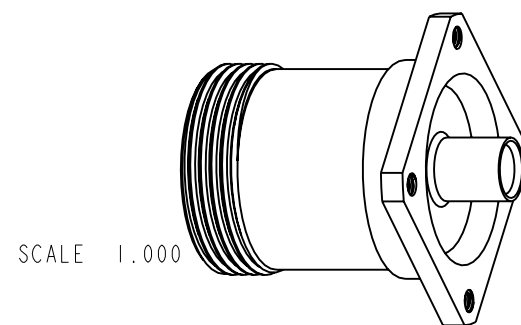
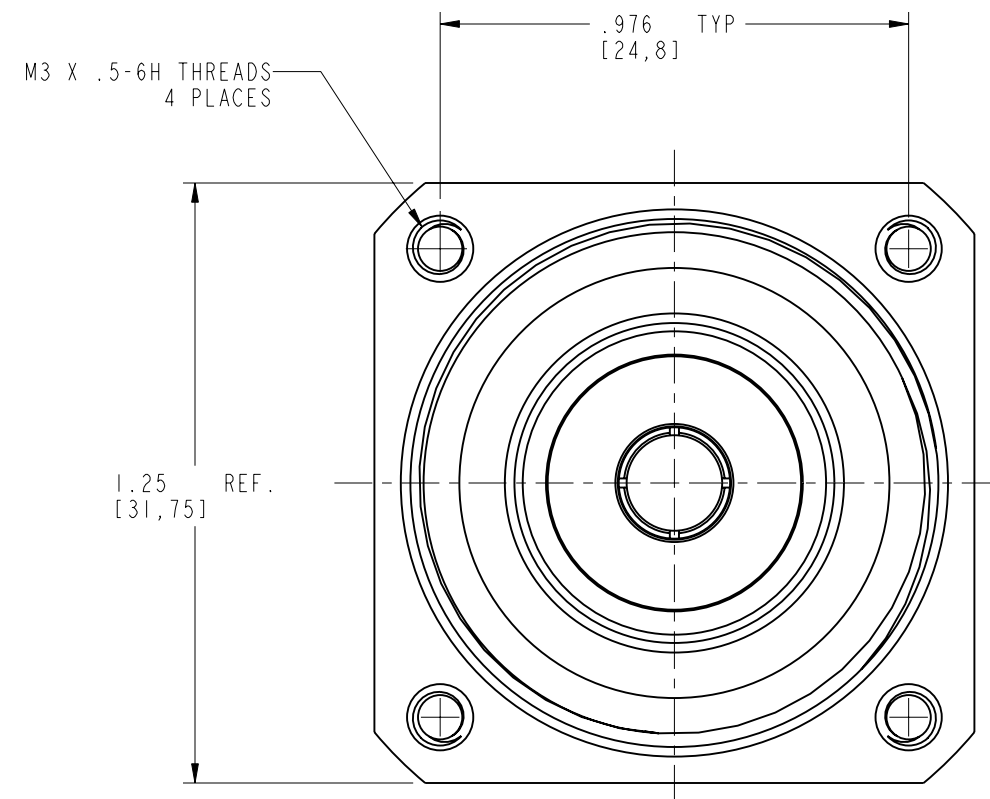
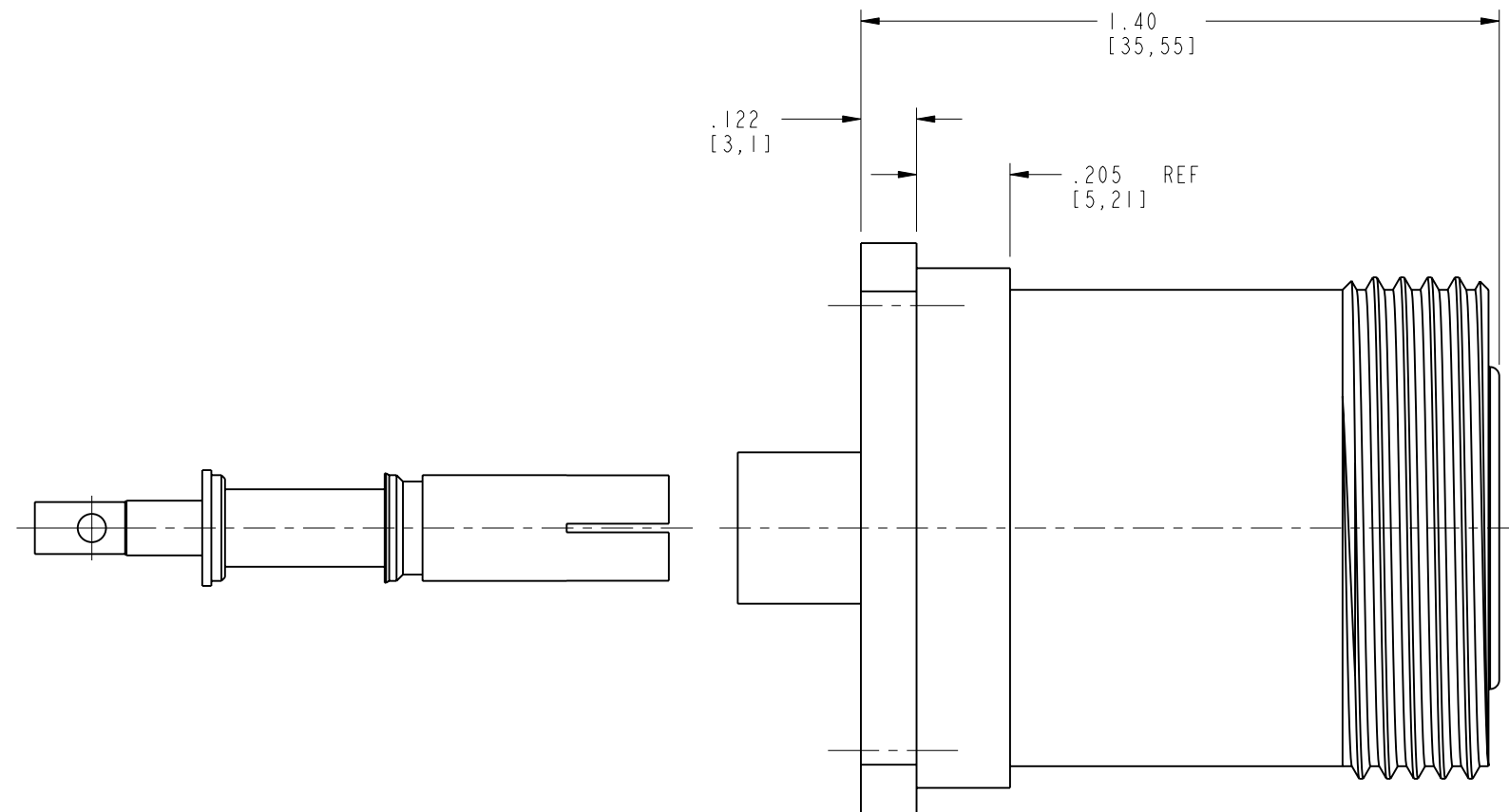


NOTES:

1. MATERIALS AND FINISHES:  
BODY - BRASS, SILVER PLATING  
CONTACT - BeCu, SILVER PLATING  
INSULATOR - PTFE
2. ELECTRICAL:  
A. IMPEDANCE: 50 OHM  
B. FREQUENCY RANGE: DC - 5.2 GHz  
C. VSWR(RETURN LOSS): 1.12 (25 dB), MAX.  
D. DIELECTRIC WITHSTANDING VOLTAGE: 2,300 VRMS, MIN.
3. MECHANICAL:  
A. DURABILITY: 500 CYCLES MIN.  
B. TEMPERATURE RANGE: -40° C TO 150° C
4. PACKAGING:  
A. QUANTITY: SINGLE PACK  
B. MARKING: BAG TO BE MARKED  
"AMPHENOL, 716-189, AND DATE CODE"



SCALE 1.000



## CUSTOMER OUTLINE DRAWING

ALL OTHER SHEETS ARE FOR INTERNAL USE ONLY

UNLESS OTHERWISE SPECIFIED, DIMENSIONS ARE IN INCHES AND TOLERANCES ARE: 2 PLACE DECIMAL      3 PLACE DECIMAL      ANGLES ±.015 (0,381 mm)      ±.005 (0,127 mm)      ± 1°	MATERIAL		DRAWN K. CAPOZZI		DATE 15-Jan-04		TITLE 7/16 (F) PANEL MOUNT SOLDER-SOLDER TO S/R .250			Amphenol RF Danbury, CT, USA Tainan, Taiwan Shenzhen, China www.amphenolrf.com		
	REFERENCE EAR #1236 & 1675 611X-4149-100		ENGINEER K. CAPOZZI		DATE 15-Jan-04							
			APPROVED O. BARTHELMES		DATE 2/18/05							
	NOTICE - These drawings, specifications, or other data (1) are, and remain the property of Amphenol Corp. (2) must be returned upon request; and (3) are confidential and not to be disclosed to any person other than those to whom they are given by Amphenol Corp. The furnishing of these drawings, specifications, or other data by Amphenol Corp., or to any other person to anyone for any purpose is not to be regarded by implication or otherwise in any manner licensing, granting rights or permitting such holder or any other person to manufacture, use or sell any product, process or design, patented or otherwise, that may in any way be related to or disclosed by said drawings, specifications, or other data.		CAD FILE 1:\716\716-189			CODE ID 74868	DWG SIZE B	DRAWING NO. 716-189		REV A		
SCALE: 2.5:1											SHEET 2 OF 2	