

NOTES:

I. MATERIALS AND FINISHES:

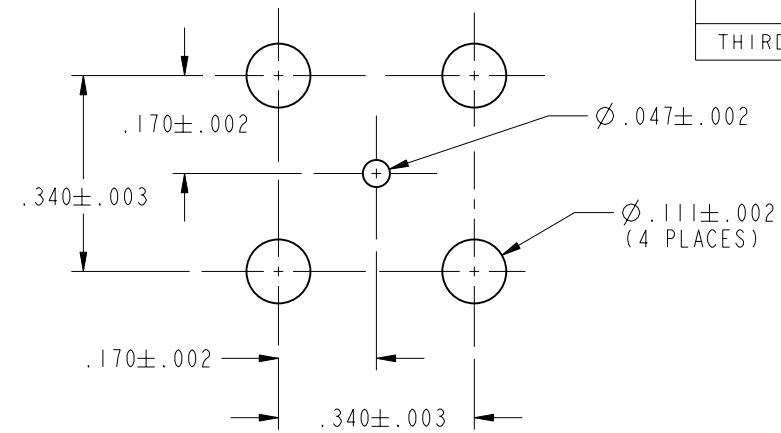
BODY - BRASS - BRIGHT TIN PLATED
CONTACT - BeCu - BRIGHT TIN PLATED
INSULATOR - PTFE

2. ELECTRICAL:

A. IMPEDANCE = 75 OHMS, NOMINAL
B. RETURN LOSS (DC-1.5 GHz) = 28 dB MINIMUM

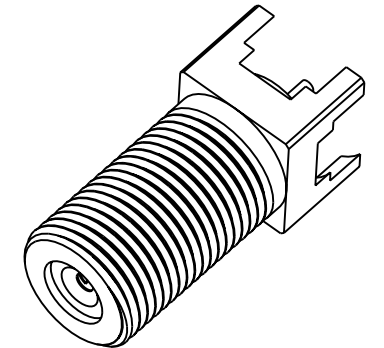
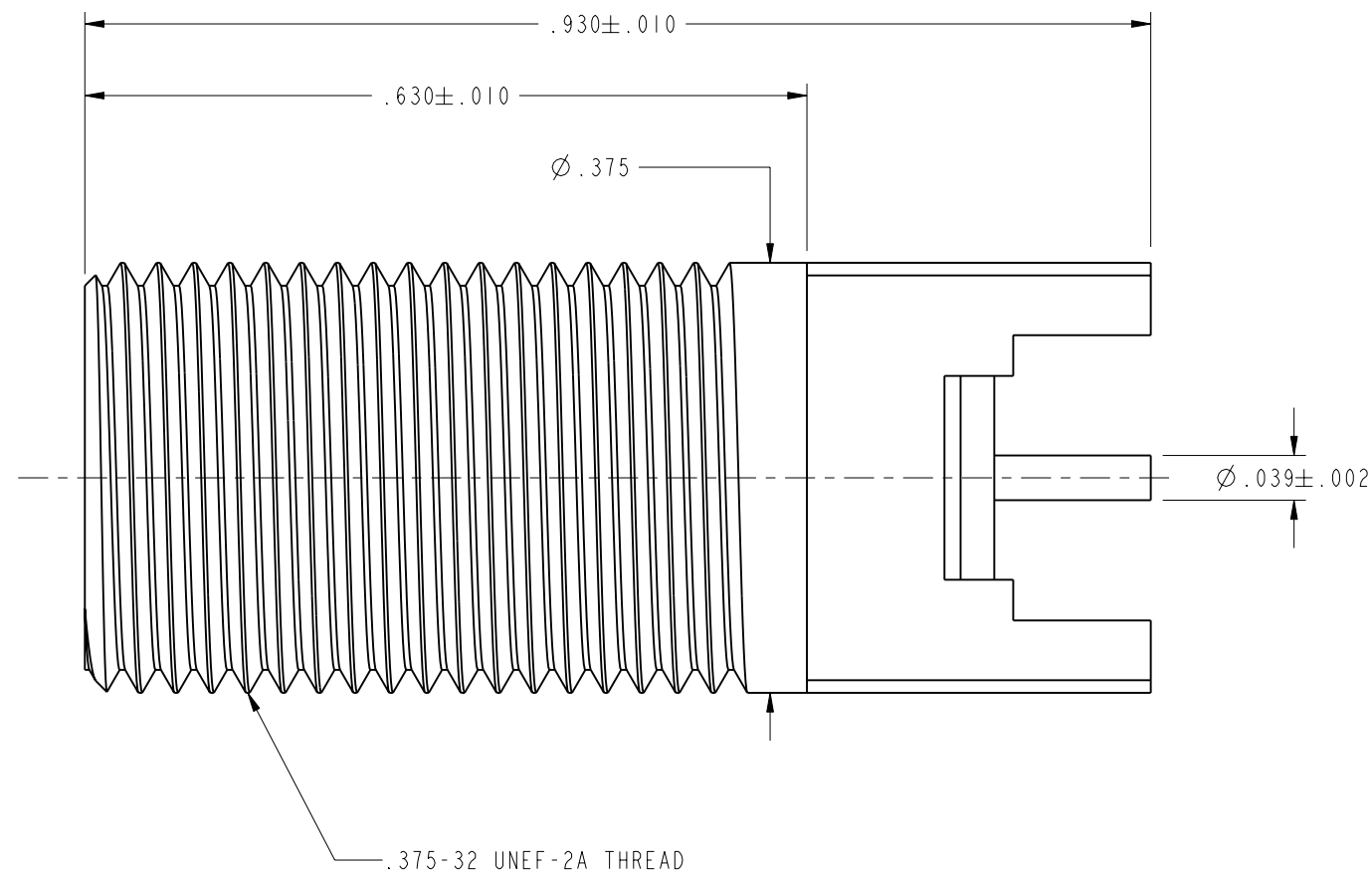
3. PHYSICAL:

A. OPERATING TEMPERATURE = -40°F TO +140°F
B. CENTER CONTACT TO ACCEPT $\varnothing .022$ TO $\varnothing .042$ PIN

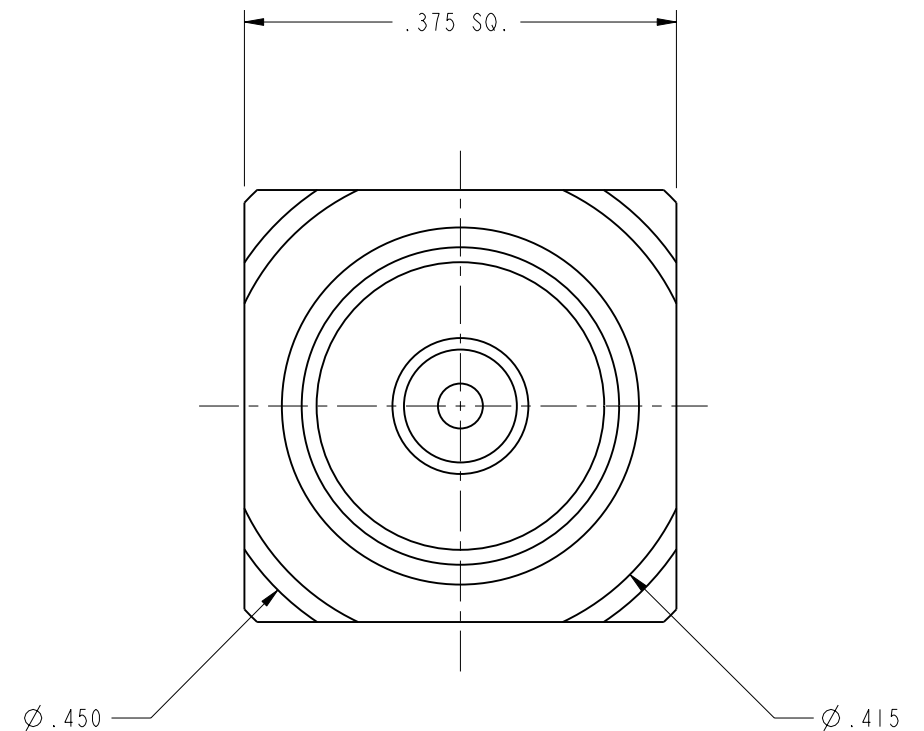


SCALE 3.000

RECOMMENDED MOUNTING PATTERN



SCALE 2.000



CUSTOMER OUTLINE DRAWING

ALL OTHER SHEETS ARE FOR INTERNAL USE ONLY

<div>UNLESS OTHERWISE SPECIFIED, DIMENSIONS ARE IN INCHES AND TOLERANCES ARE: 2 PLACE DECIMAL 3 PLACE DECIMAL ANGLES ±.015 (0,381 mm) ±.005 (0,127 mm) ± 1°</div> <div>NOTICE - These drawings, specifications, or other data (1) are, and remain the property of Amphenol Corp. (2) must be returned upon request; and (3) are confidential and not to be disclosed to any person other than those to whom they are given by Amphenol Corp. The furnishing of these drawings, specifications, or other data by Amphenol Corp., or to any other person to anyone for any purpose is not to be regarded by implication or otherwise in any manner licensing, granting rights or permitting such holder or any other person to manufacture, use or sell any product, process or design, patented or otherwise, that may in any way be related to or disclosed by said drawings, specifications, or other data.</div>	MATERIAL	DRAWN K. CAPOZZI	DATE 08-May-02	TITLE F CONNECTOR, STRAIGHT, PCB MOUNT			Amphenol Amphenol Corporation Communication and Network Products Division Danbury, CT U.S.A. 06810			
	REFERENCE EAR# 612 GEN# ASSYF6_F 616X-1042-100	ENGINEER B.C. GLEISSNER	DATE 24-Apr-00				SCALE: 6.0:1		SHEET	1 OF 2
		APPROVED OWEN BARTHELMES	DATE 5/15/025							
		CAD FILE I:\CATV\F&G\531-40132		CODE ID 74868	DWG SIZE B	DRAWING NO. 531-40132		REV A		