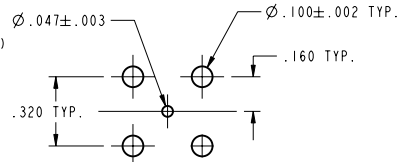
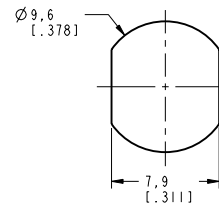


1. MATERIALS OF CONSTRUCTION:  
BODY = BRASS, BRIGHT TIN PLATED (.000180 THICK)  
CONTACT PIN = BeCu, BRIGHT TIN PLATED (.000250)  
LOCKWASHER = PHOSPHOR BRONZE, NICKEL PLATED (.000100)  
NUT = BRASS, NICKEL PLATED (.000100)  
INSULATORS = PTFE, MIL-P-19468  
GASKET = SILICONE RUBBER, COLOR RED

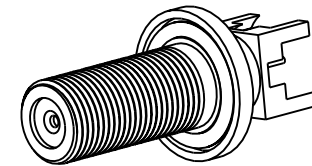
2. ELECTRICAL:  
RETURN LOSS: -22dB UP TO 1GHz  
ATTENUATION: <.1dB UP TO 1GHz



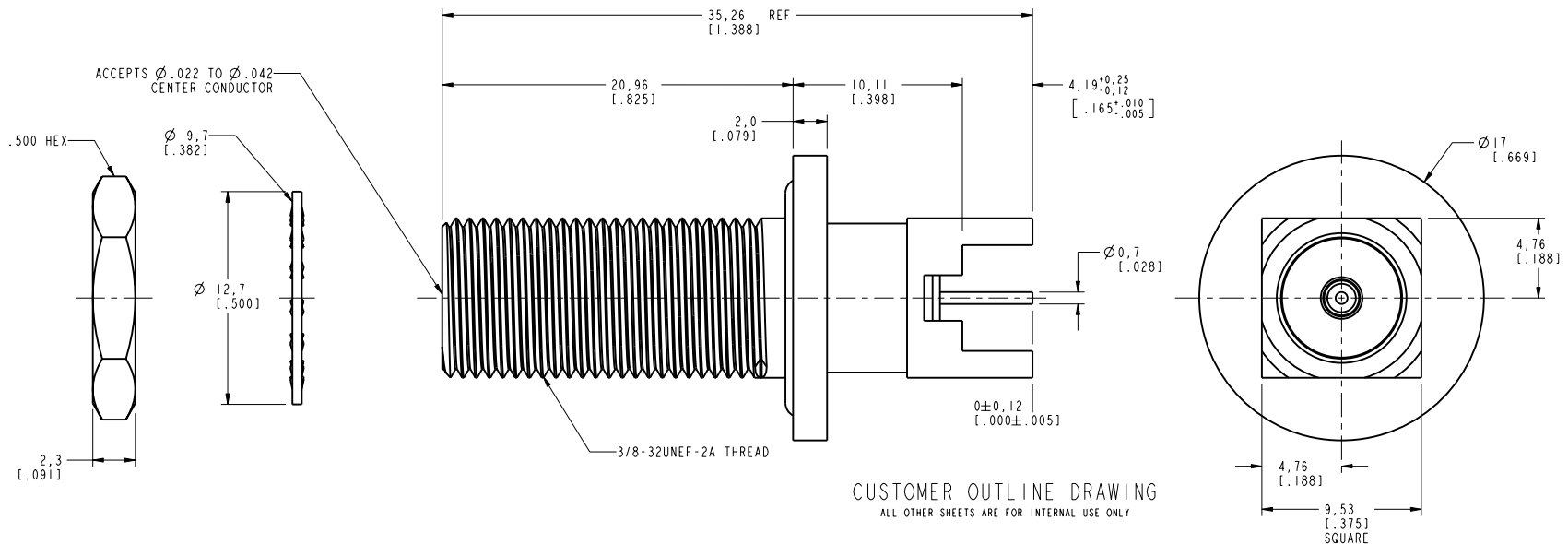
RECOMMENDED  
MOUNTING PATTERN  
SCALE: 2.000



RECOMMENDED MOUNTING  
HOLE DIMENSIONS  
SCALE 3.000



SCALE: 2.000



CUSTOMER OUTLINE DRAWING  
ALL OTHER SHEETS ARE FOR INTERNAL USE ONLY

UNLESS OTHERWISE SPECIFIED, DIMENSIONS ARE IN INCHES AND TOLERANCES ARE: 2 PLACE DECIMAL      3 PLACE DECIMAL      ANGLES ±.015 (0.381 mm)      ±.005 (0.127 mm)      ± 1°	MATERIAL		DRAWN		DATE	TITLE	Amphenol Amphenol Corporation Communication and Network Products Division Danbury, CT U.S.A. 06810					
	J. DEL NEGRO		ENGINEER		DATE							
NOTICE - These drawings, specifications, or other data (1) are, and remain the property of Amphenol Corp. (2) must be returned upon request; and (3) are confidential and not to be disclosed to any person other than those to whom they are given by Amphenol Corp. or to any other person to anyone for any purpose is not to be regarded by implication or otherwise in any manner licensing, granting rights or permitting such holder or any other person to manufacture, use or sell any product, process or design, patented or otherwise, that may in any way be related to or disclosed by said drawings, specifications, or other data.	REFERENCE		J. DEL NEGRO		DATE	F (FEMALE) STRAIGHT PCB	SCALE: 4.0:1			SHEET	2 OF 2	REV
	E&R# 185 GEN# 531-40059.ASM		APPROVED		DATE							
					J. DEL NEGRO		4/2/01	CAD FILE		CODE 10	DWG SIZE	DRAWING NO.
							1:VCATVTYPE\531-40103		74868	B	531-40103	A