


NOTES:	531-40084		REVISIONS			
	DRAWING NO.	REV	DESCRIPTION	DATE	ECO	APPR
	THIRD ANGLE PROJ. 	A	RELEASE TO MFG	5/9/01	43761	CPM
		B	SEE SHEET 1	6/20/05	45590	CPM

1. MATERIALS AND FINISHES:

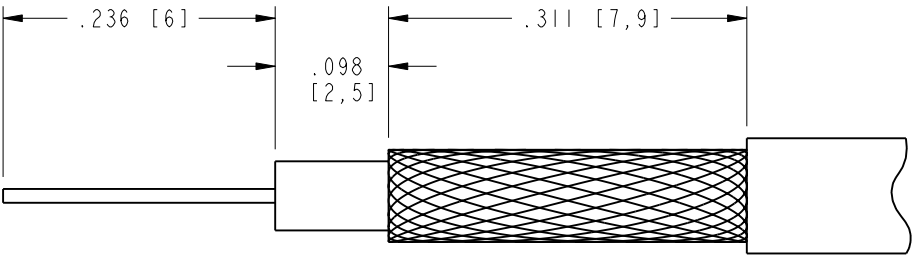
BODY - BRASS - TIN PLATED  
CONTACT - BeCu - BRIGHT TIN PLATED  
FERRULE - BRASS - TIN PLATED  
INSULATOR - POLYPROPYLENE

2. ELECTRICAL:

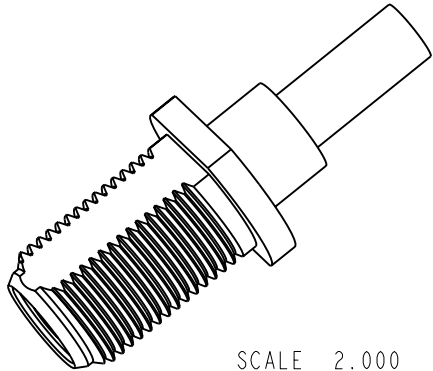
- A. IMPEDANCE = 75 OHMS, NOMINAL  
B. VSWR [RETURN LOSS] (DC-1.0 GHz) = 1.25 : 1 MAX. [19.1 dB]  
(1.0-1.5 GHz) = 2.0 : 1 MAX. [9.5 dB]  
C. INSERTION LOSS (DC-1.0 GHz) = 0.10 dB MAX.  
(1.0-1.5 GHz) = 0.55 dB MAX.  
D. DIELECTRIC WITHSTANDING VOLTAGE = 1500 VRMS  
E. INSULATION RESISTANCE = 500 MEGOHMS MIN.

3. PHYSICAL:

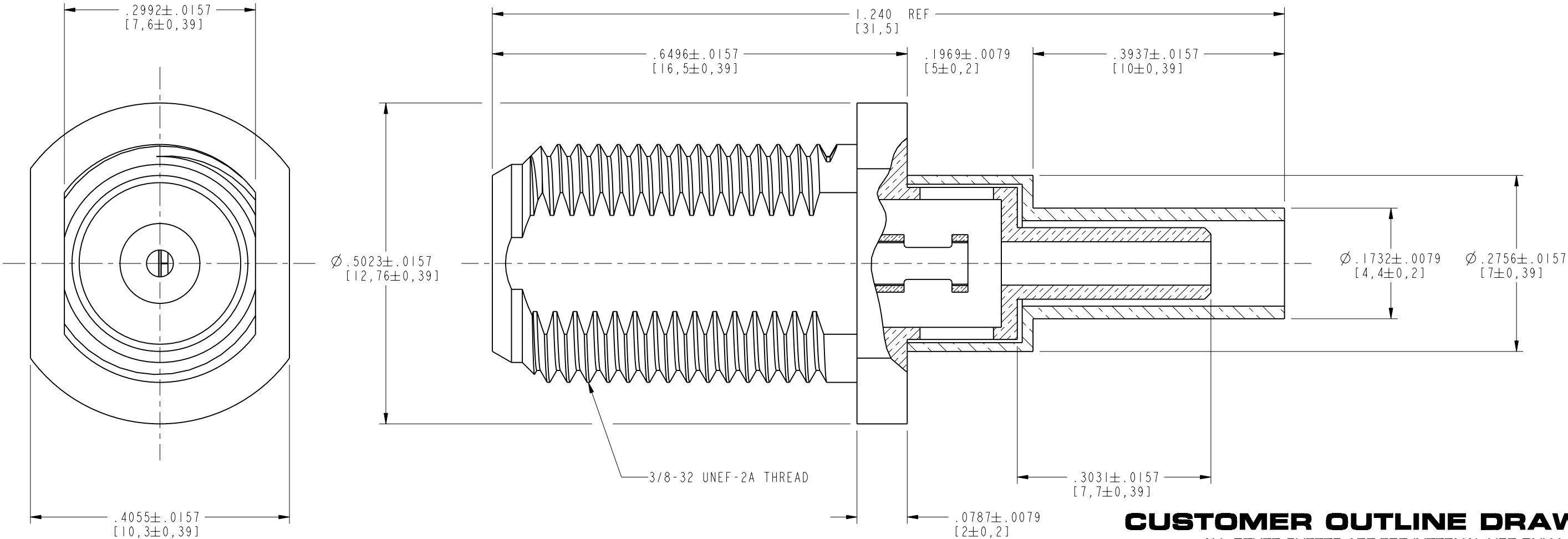
- A. OPERATING TEMPERATURE = -40°F TO +140°F (-40°C TO +60°C)  
B. CENTER CONTACT TO ACCEPT Ø.022 TO Ø.042 PIN [Ø0.56 TO Ø1.07]  
C. INTERFACE IS COMPATIBLE WITH SCTE IPS-SP-401 "F" PLUGS



SCALE 6.000  
RECOMMENDED CABLE  
STRIPPING DIMENSIONS



SCALE 2.000



**CUSTOMER OUTLINE DRAWING**  
ALL OTHER SHEETS ARE FOR INTERNAL USE ONLY

UNLESS OTHERWISE SPECIFIED, DIMENSIONS ARE IN INCHES AND TOLERANCES ARE: 2 PLACE DECIMAL 3 PLACE DECIMAL ANGLES ±.015 (0,381 mm) ±.005 (0,127 mm) ± 1°	MATERIAL	DRAWN C. McGRATH	DATE 5/9/01	TITLE  'F' RECEPTACLE, CRIMP TYPE, STRAIGHT FOR RD-179		Amphenol RF Danbury, CT, USA Tainan, Taiwan Shenzhen, China www.amphenolrf.com		
		ENGINEER V. NGUYEN	DATE 5/9/01					
	REFERENCE EAR 967534-0 GEN# ASSYF10_F	APPROVED O. BARTHELMES	DATE 5/9/01					
NOTICE - These drawings, specifications, or other data (1) are, and remain the property of Amphenol Corp. (2) must be returned upon request; and (3) are confidential and not to be disclosed to any person other than those to whom they are given by Amphenol Corp. The furnishing of these drawings, specifications, or other data by Amphenol Corp., or to any other person to anyone for any purpose is not to be regarded by implication or otherwise in any manner licensing, granting rights or permitting such holder or any other person to manufacture, use or sell any product, process or design, patented or otherwise, that may in any way be related to or disclosed by said drawings, specifications, or other data.		CAD FILE I:\CATV\F&G\531-40084	CODE ID 74868	DWG SIZE B	DRAWING NO. 531-40084		REV B	