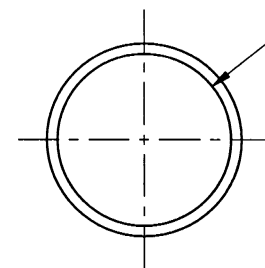
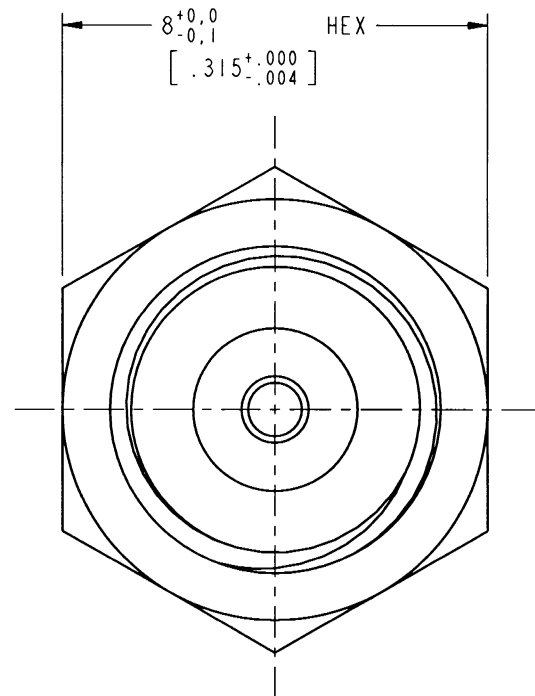


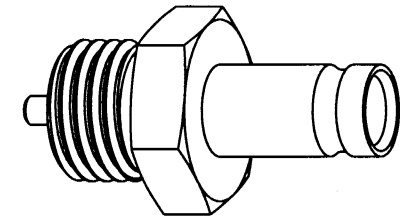
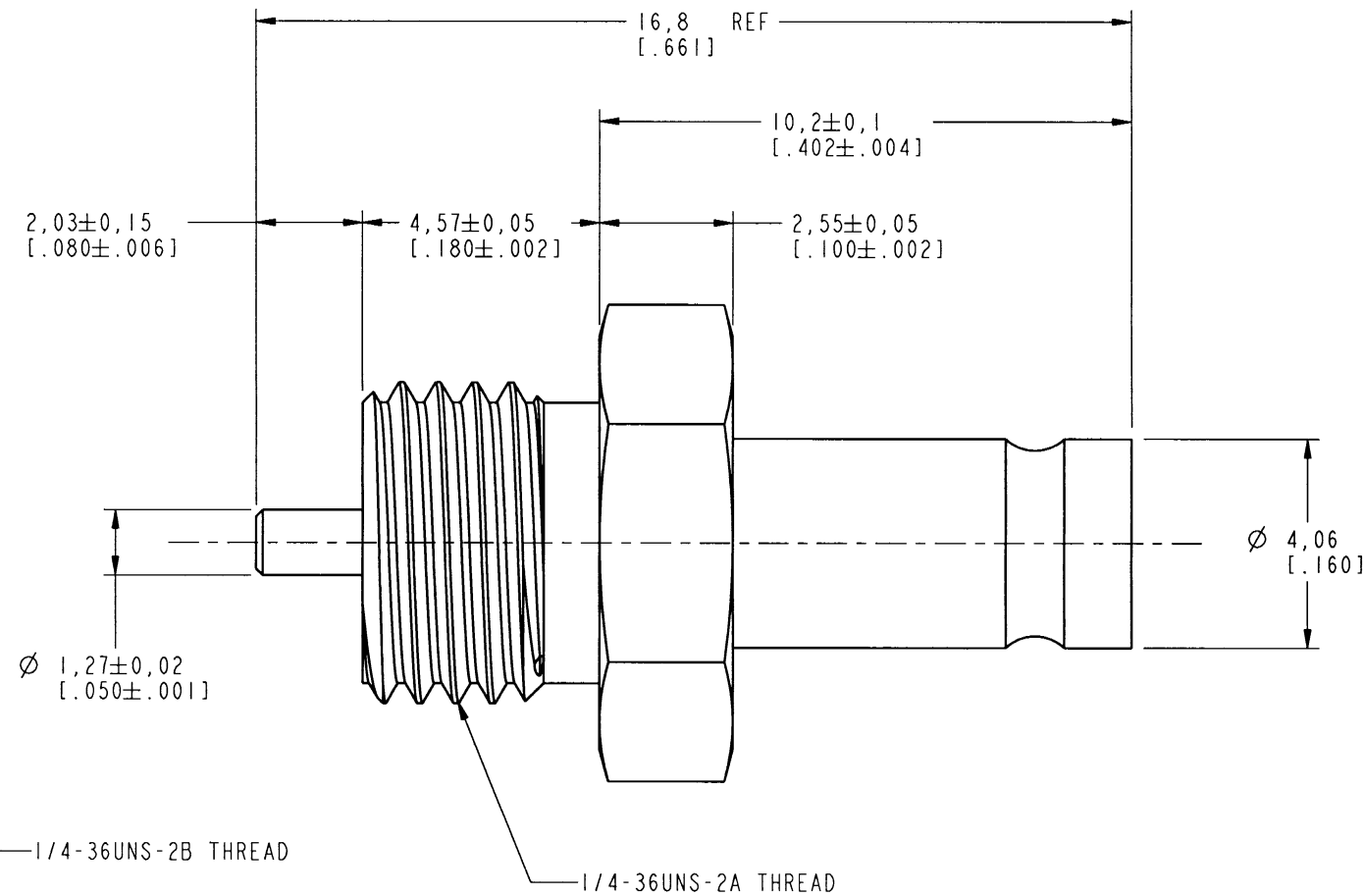
NOTES:

1. MATERIALS OF CONSTRUCTION:
BODY = BRASS, GOLD PLATED
CONTACT PIN = BeCu, GOLD PLATED
INSULATOR = TEFLON, MIL-P-19468

102-912-02		REVISIONS				
DRAWING NO.	REV	DESCRIPTION	DATE	ECO	APPR	
THIRD ANGLE PROJ. 	A	RELEASE TO MFG.	8/3/01	43694	CPM	



RECOMMENDED
MOUNTING HOLE
SCALE 4.000



SCALE 3.000

CUSTOMER OUTLINE DRAWING
ALL OTHER SHEETS ARE FOR INTERNAL USE ONLY

<div>UNLESS OTHERWISE SPECIFIED, DIMENSIONS ARE IN INCHES AND TOLERANCES ARE: 0.5 - 6mm ±0.2mm</div> <div>6 - 30mm ±0.4mm</div> <div>30 - 120mm ± 0.6mm</div>	MATERIAL		DRAWN C. McGRATH		DATE 16-Feb-01		TITLE 1.0/2.3 RECEPTACLE JACK			Amphenol Amphenol Corporation Communication and Network Products Division Danbury, CT U.S.A. 06810				
	REFERENCE GEN# 102-912-02_ASSY		ENGINEER O. BARTHELMES		DATE 16-Feb-01									
			APPROVED		DATE									
	CAD FILE 1:\1023\102-912-02		CODE ID 74868	DWG SIZE B	DRAWING NO. 102-912-02		REV A							
<div>NOTICE - These drawings, specifications, or other data (1) are, and remain the property of Amphenol Corp. (2) must be returned upon request; and (3) are confidential and not to be disclosed to any person other than those to whom they are given by Amphenol Corp. The furnishing of these drawings, specifications, or other data by Amphenol Corp., or to any other person to anyone for any purpose is not to be regarded by implication or otherwise in any manner licensing, granting rights or permitting such holder or any other person to manufacture, use or sell any product, process or design, patented or otherwise, that may in any way be related to or disclosed by said drawings, specifications, or other data.</div>											SCALE: 7.0:1		SHEET 2 OF 2	