

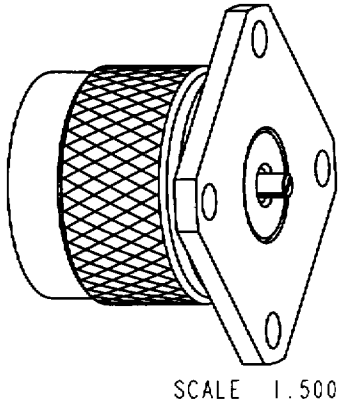
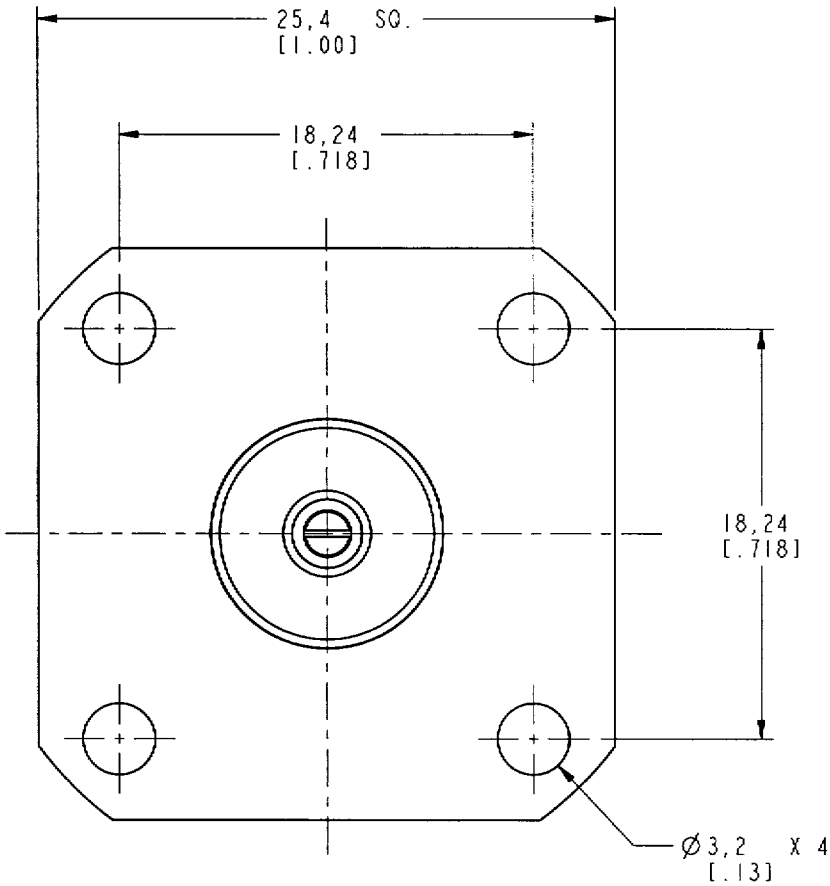
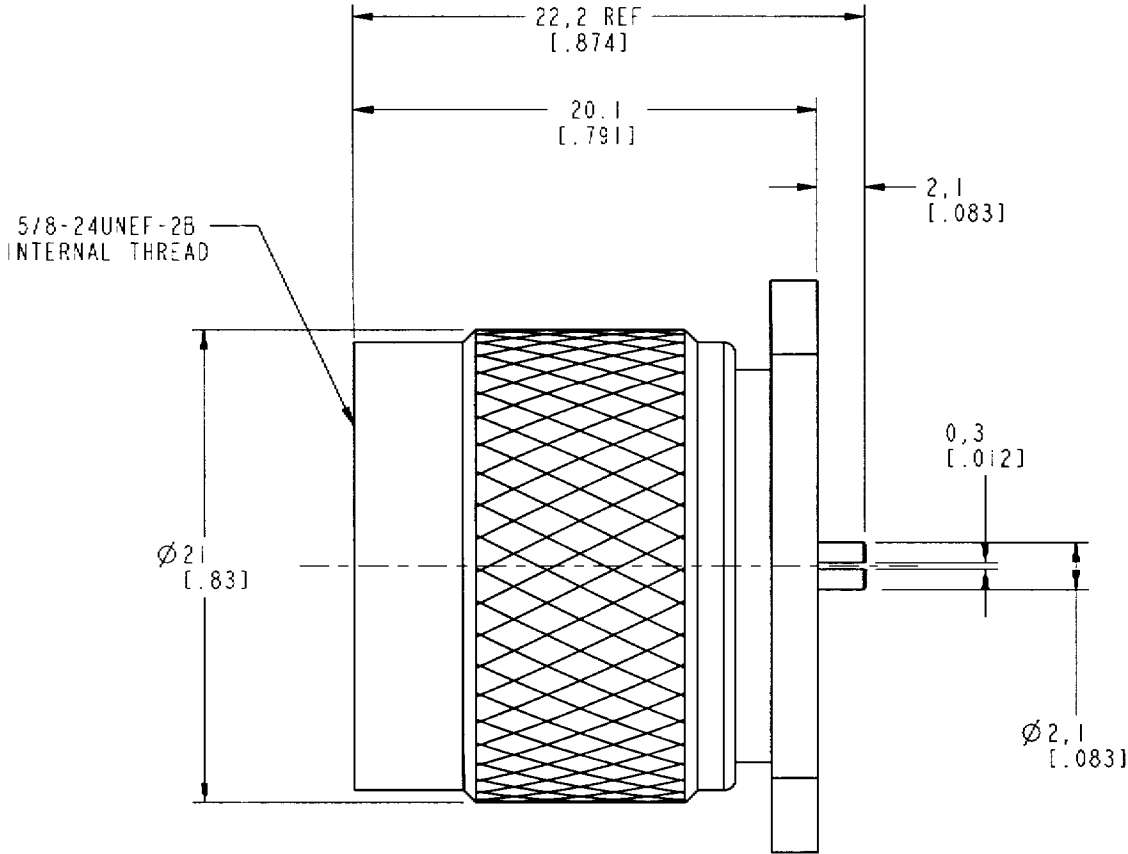
NOTES:

1. MATERIALS OF CONSTRUCTION:
SHELL, BODY/FLANGE, & CONTACT BODY = BRASS, NICKEL PLATED
CONTACT PIN = BRASS, GOLD PLATED
RETAINER RING = STAINLESS STEEL, NATURAL
INSULATOR = TEFLON PER MIL-P-19468
GASKET = SILICONE RUBBER, COLOR RED


82-6100-RFX

REVISIONS

DRAWING NO.	REV	DESCRIPTION	DATE	ECO	APPR
THIRD ANGLE PROJ.	A	RELEASE TO MFG.	11/30/00	43606	CPM



CUSTOMER OUTLINE DRAWING
FOR REFERENCE ONLY

UNLESS OTHERWISE SPECIFIED, DIMENSIONS ARE IN INCHES AND TOLERANCES ARE: 0.5 - 6mm ±0.2mm 6 - 30mm ±0.4mm 30 - 120mm ± 0.6mm	MATERIAL	DRAWN C. McGRATH	DATE 11/16/00	TITLE 'N' PANEL RECEPTACLE PLUG		Amphenol Amphenol Corporation Communication and Net-Work Products Division Danbury, CT U.S.A. 06810			
	REFERENCE	ENGINEER T. AUBIN	DATE 11/16/00						
NOTICE - These drawings, specifications, or other data (1) are, and remain the property of Amphenol Corp. (2) must be returned upon request; and (3) are confidential and not to be disclosed to any person other than those to whom they are given by Amphenol Corp. The furnishing of these drawings, specifications, or other data by Amphenol Corp., or to any other person to anyone for any purpose is not to be regarded by implication or otherwise in any manner licensing, granting rights or permitting such holder or any other person to manufacture, use or sell any product, process or design, patented or otherwise, that may in any way be related to or disclosed by said drawings, specifications, or other data.	GEN# 49000-SRFX.LSSY	APPROVED 	DATE 11/29/00	CAD FILE I:\N\82-6100-RFX		CODE ID 74868	DWG SIZE B	DRAWING NO. 82-6100-RFX	REV A