

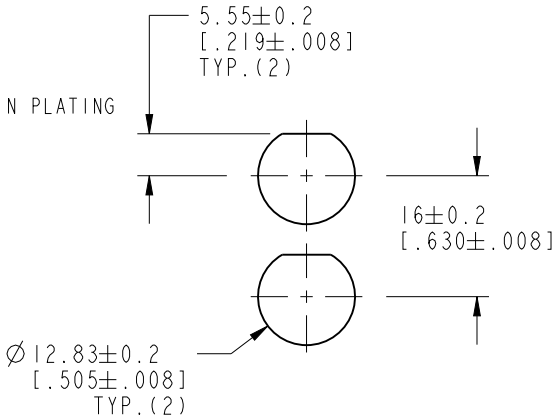
NOTES:

1. MATERIALS OF CONSTRUCTION:  
CONNECTOR BODY = ZINC DIE CAST, NICKEL PLATED (.000100" THICK MIN)  
REAR COVER = ZINC DIE CAST, NICKEL PLATED (.000100" THICK MIN)  
CENTER CONTACTS = PHOSPHOR BRONZE, GOLD PLATING AT CONTACT AREA, TIN PLATING AT TAIL AND NICKEL PLATING OVERALL, GOLD PLATING THICKNESS .000003" MIN, TIN PLATING THICKNESS .000100" MIN, NICKEL PLATING THICKNESS .000050" MIN.  
GROUNDING TERMINAL = COPPER PLATED STEEL WIRE WITH TIN PLATING (.000100" THICK MIN)  
MOUNTING POST = BRASS, TIN PLATED (.000100" THICK MIN)  
LOCK WASHER (2) = S50C, NICKEL PLATED (.000080" THICK MIN)  
SPANNER NUTS (2) = BRASS, NICKEL PLATED (.000080" THICK MIN)  
INSULATOR = POLYPROPYLENE UL94 HB  
RETENTION INSULATOR = PBT+15% GLASS FIBER  
SPACER = PBT+15% GLASS FIBER
2. ELECTRICAL:  
A. IMPEDANCE: 50 OHM  
B. FREQUENCY RANGE: DC - 500 MHz
3. PACKAGING:  
A. BULK PACKAGED IN TRAY  
B. QUANTITY = 20 PIECES

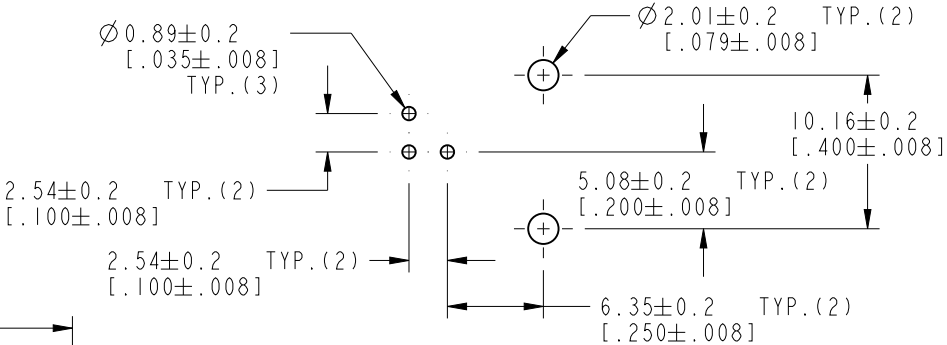
THIRD ANGLE PROJ.

REVISIONS

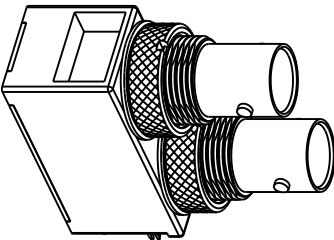
REV	DESCRIPTION	DATE	ECO	APPR
A	RELEASE TO MFG.	6/19/03	44526	CPM
B	HEX NUTS WERE SPANNER NUTS	5/13/04	44921	CPM
C	CONT TAIL WAS TIN/LEAD PLT; LWASHER WAS PHOSPHOR BRONZE	12/23/04	45329	CPM
D	SPANNER NUTS WERE HEX NUTS	4/18/05	45501	CPM
E	ADD BNC SERIES.....348; & EAR#	4/24/06	46031	CPM
F	SYNCH THE DRAWING WITH DANBURY	14-Aug-13	49674	SH
G	REMOVED MIL-STD-348	12/9/13	49748	EW



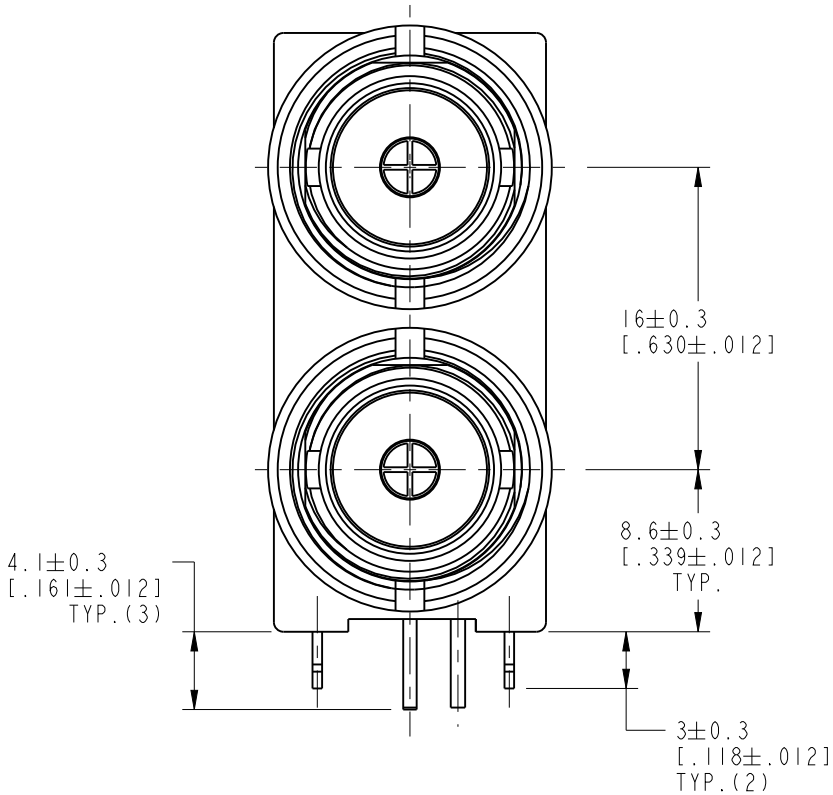
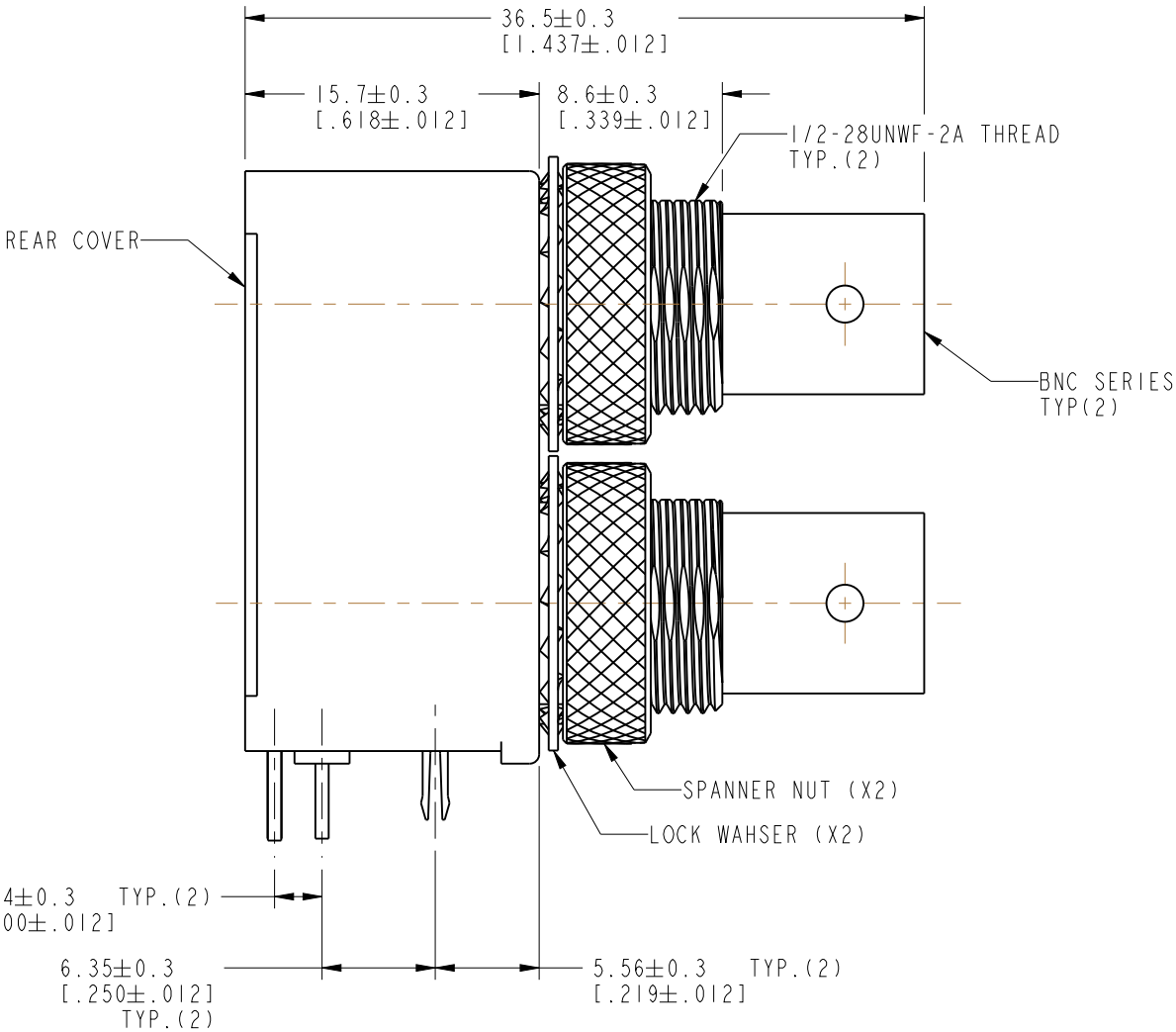
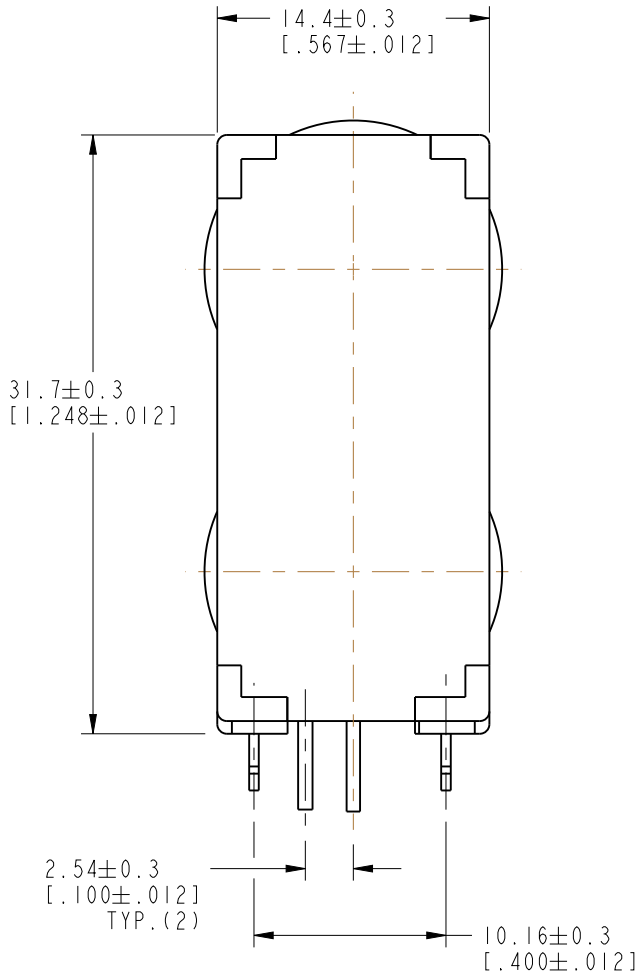
RECOMMENDED MOUNTING HOLE DIMENSIONS  
SCALE 1.000



RECOMMENDED PCB MOUNTING  
SCALE 2.000



SCALE 1.000



**CUSTOMER OUTLINE DRAWING**  
ALL OTHER SHEETS ARE FOR INTERNAL USE ONLY

UNLESS OTHERWISE SPECIFIED, DIMENSIONS ARE IN METRIC AND TOLERANCES ARE: <0.5mm ± 0.05mm    0.5 - 6mm ± 0.1mm    6 - 30mm ± 0.2mm    30 - 120mm ± 0.3mm    ANGLES ±1°	MATERIAL	DRAWN T.DENG	DATE 14-Aug-13	TITLE DUAL PORT BNC PCB MOUNT RECEPTACLE HOOK		Amphenol RF www.amphenolrf.com	
		ENGINEER O. BARTHELMES	DATE 05/30/03				
		REFERENCE EAR# 972 & 1960 GEN# 31-6051-ASSY SIMILAR TO: 31-6071 CONFIGURATION LEVEL:	APPROVED S.HSIEH	DATE 14-Aug-13	SCALE: 2.5:1.0   SHEET 2 OF 2		DRAWING NO. B705003-NPB3G-50
		FINISH	CAD FILE		DWG SIZE B	REV G	ITEM NO. 017050AAE00MA5F PART NO. 31-6114