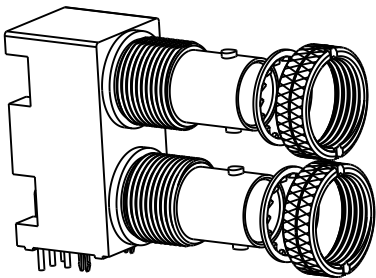
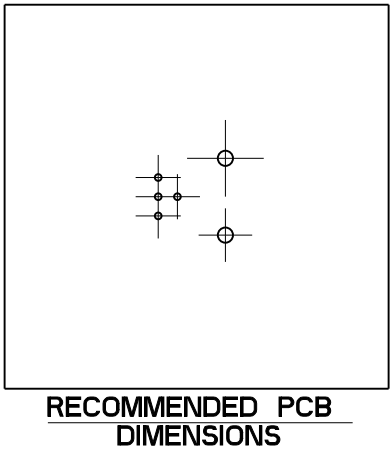
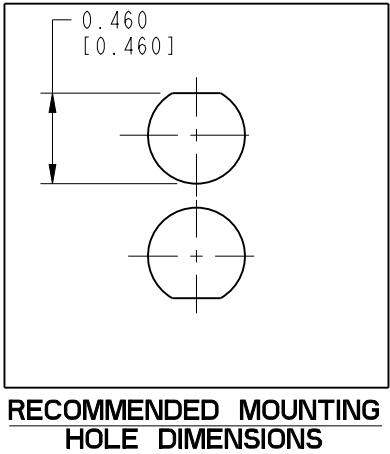


NOTES:

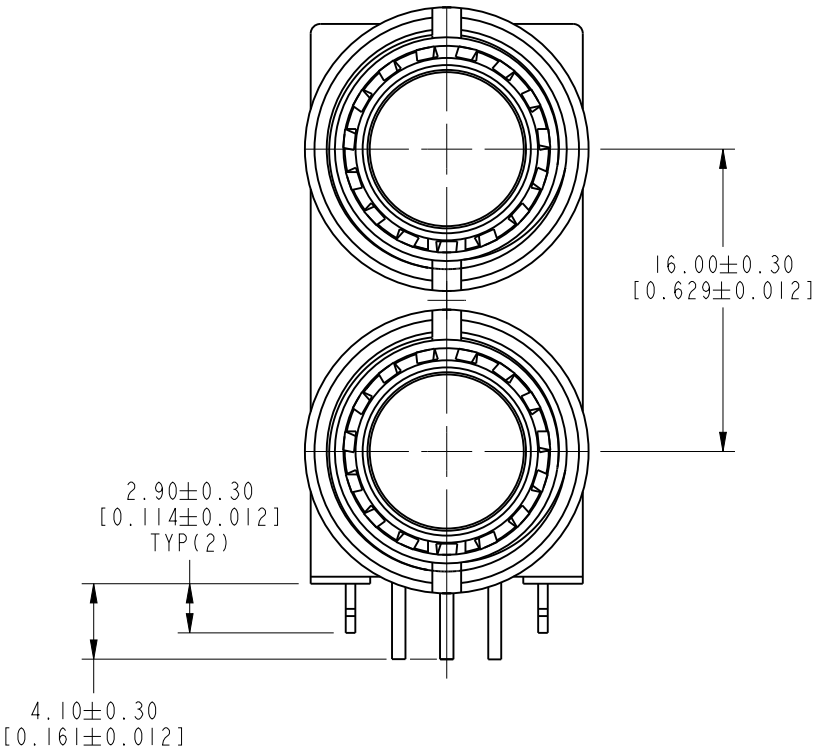
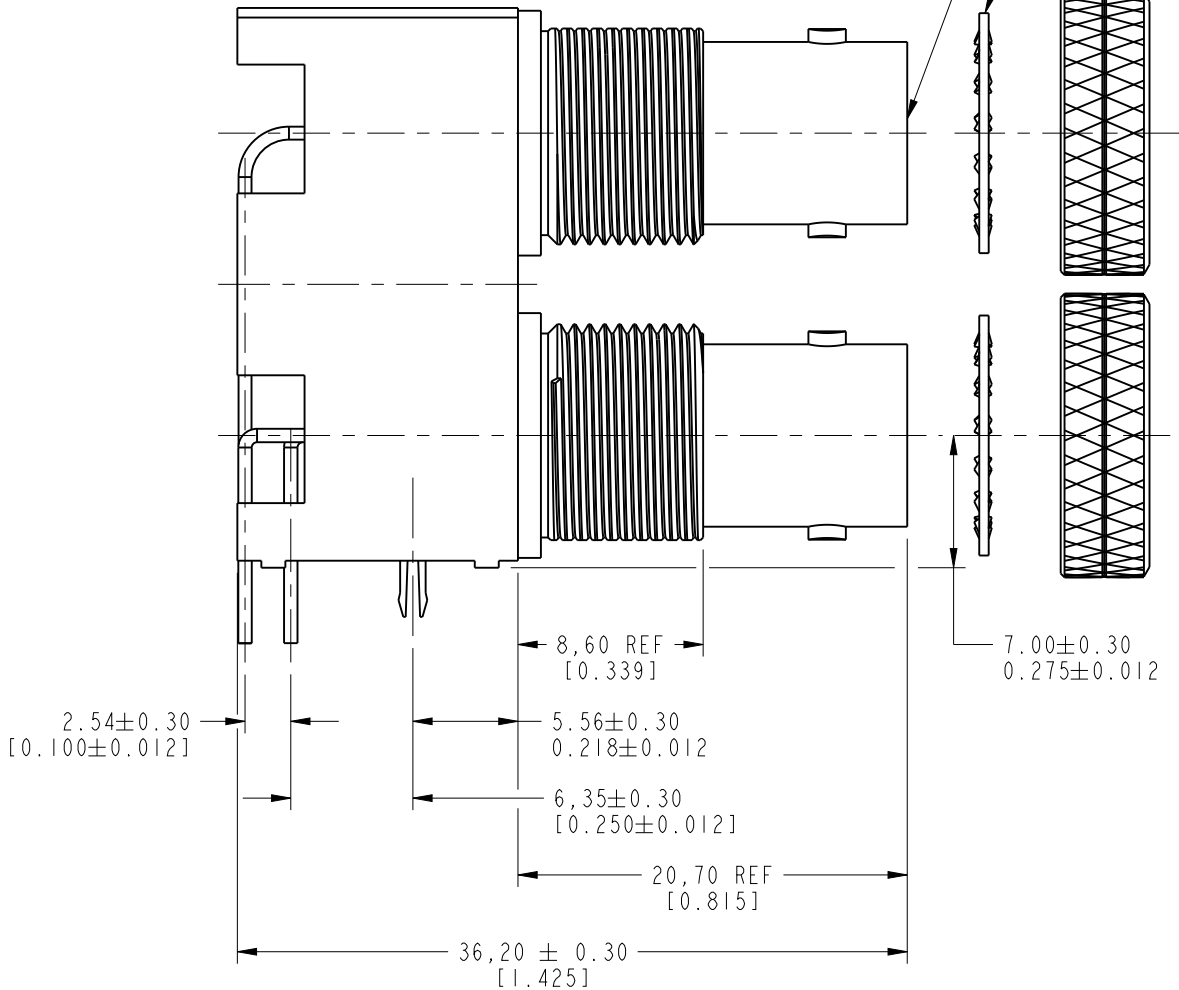
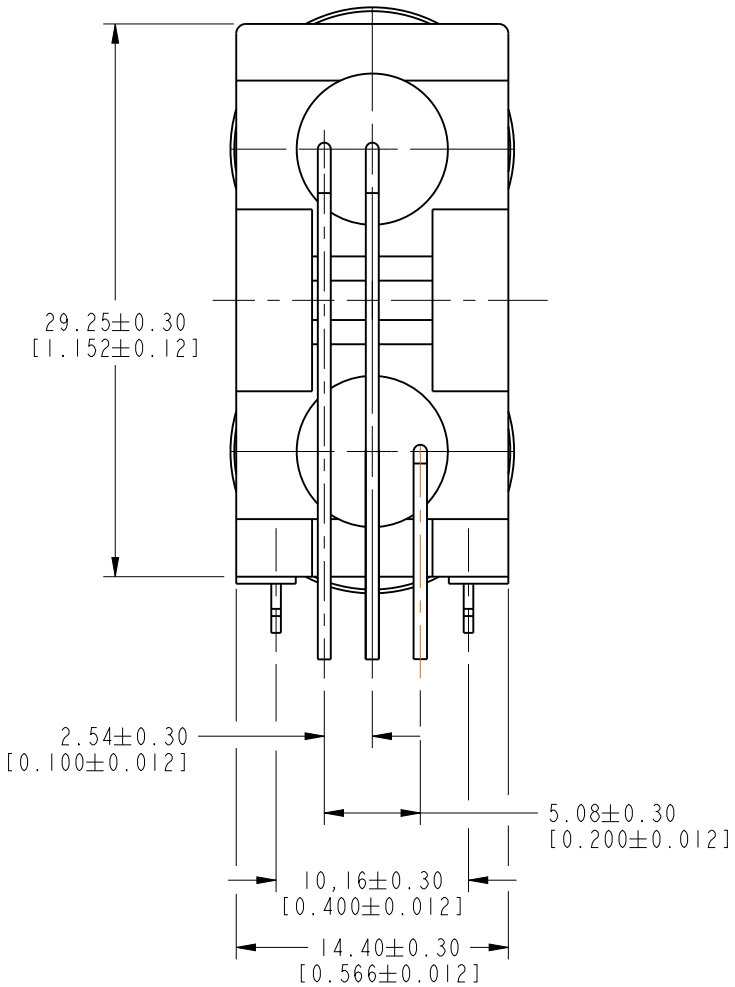
I. MATERIALS & FINISHES:
BODY = ZINC DIE CAST, NICKEL PLATING
CONTACT PINS (2) = PHOSPHOR BRONZE, GOLD FLASH AT CONTACT AREA
TIN PLATING AT TAIL, NICKEL OVERALL
GROUND POSTS (2) = COPPER, BRIGHT TIN PLATING (0.000080 THICK)
MOUNTING POST = BRASS, TIN PLATING
SPANNER NUT = BRASS, NICKEL PLATING

THIRD ANGLE PROJ.

REVISIONS				
REV	DESCRIPTION	DATE	ECO	APPR
A	RELEASE TO MFG.	19-Jun-03	44526	CPM
E	PIN LENGTH WAS 4.00 MM, FORK LENGTH WAS 2.60 MM	09-Sep-14	50073	EW
F	UPDATED SPANNER MODEL TO SHOW KNURL & GROOVE	10-Feb-16	50851	EW
G	NOTE 4 ADDED	4/14/16	441	AG



SCALE 1.000



CUSTOMER OUTLINE DRAWING
ALL OTHER SHEETS ARE FOR INTERNAL USE ONLY

UNLESS OTHERWISE SPECIFIED, DIMENSIONS ARE IN METRIC AND TOLERANCES ARE: <0.5mm 0.5 - 6mm 6 - 30mm 30 - 120mm ANGLES ± 0.05mm ±0.1mm ±0.2mm ± 0.3mm ±1°	MATERIAL SEE NOTES	DRAWN C. McGRATH	DATE 04-Jun-03	TITLE DUAL PORT BNC R/A BHD JACK PCB MOUNT RECEPTACLE		Amphenol RF www.amphenolrf.com	
		ENGINEER O. BARTHELMES	DATE 04-Jun-03				
	REFERENCE EAR# 1028 GEN# 31-6052-ASSY	APPROVED K. CAPOZZI	DATE 4/14/16			SCALE: 2.5:1.0	SHEET 2 OF 2
	CONFIGURATION LEVEL: In Work	CAD FILE	DWG SIZE B	REV G	ITEM NO.31-6058		
	FINISH				PART NO.31-6058		