

NOTES:

1. MATERIALS OF CONSTRUCTION:
CONNECTOR BODY = ZINC DIE CAST, NICKEL PLATED (.000100 THICK MIN)
REAR COVER = ZINC DIE CAST, NICKEL PLATED
CENTER CONTACTS = PHOSPHOR BRONZE, GOLD FLASH OVER NICKEL PLATED (.000100 THICK MIN)
IN CONTACT AREA, CONTACT TAILS ARE TIN OVER NICKEL (.000100 THICK MIN)
GROUNDING TERMINAL = COPPER, TIN PLATED (.000080 THICK)
MOUNTING HOOKS = BRASS, TIN PLATED (.000080 THICK MIN)
LOCK WASHER = PHOSPHOR BRONZE , NICKEL PLATED (.000080 THICK MIN)
SPANNER NUT = BRASS, NICKEL PLATED (.000080 THICK MIN)
INSULATORS = POLYPROPYLENE UL94 HB
FASTENERS = STEEL
RETENTION INSULATOR = PBT+15% GLASS FIBER
SPACER = PBT+15% GLASS FIBER

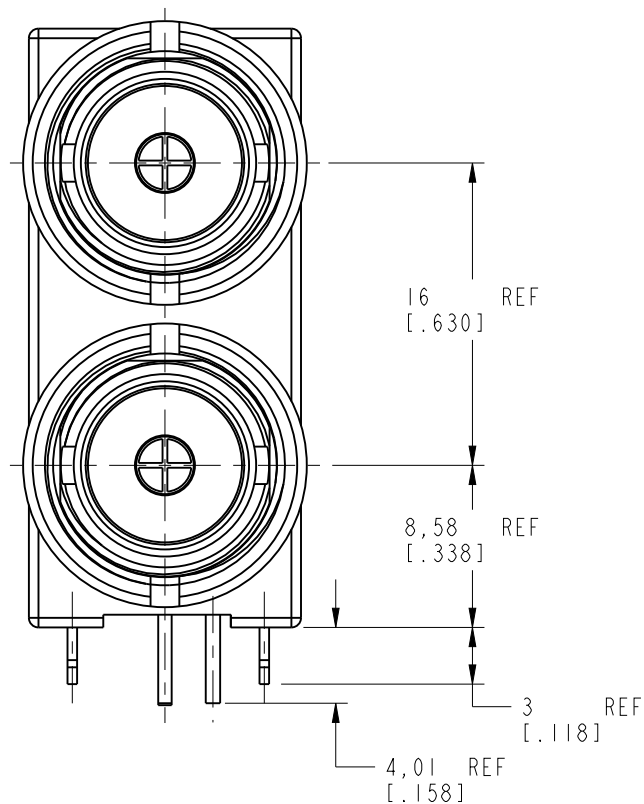
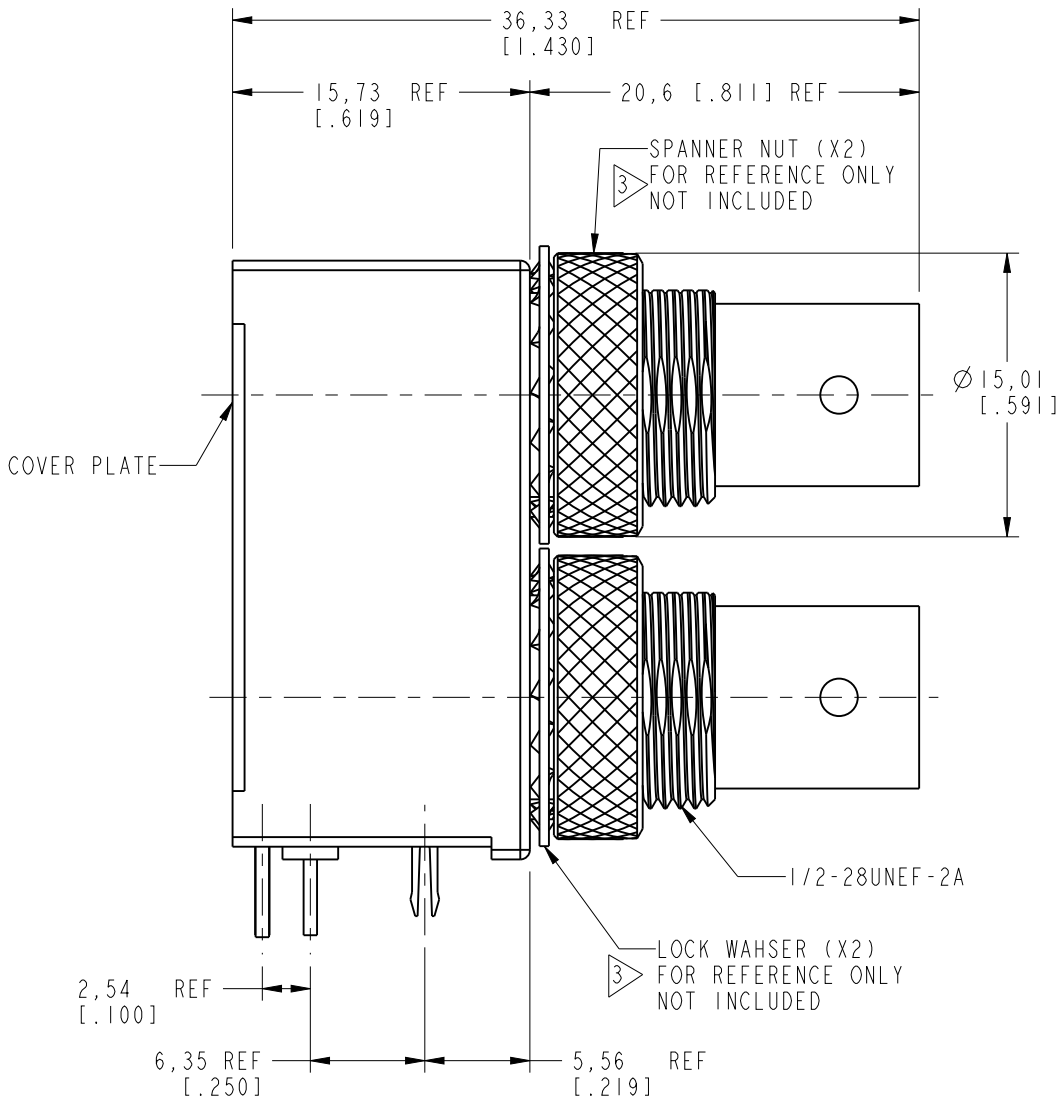
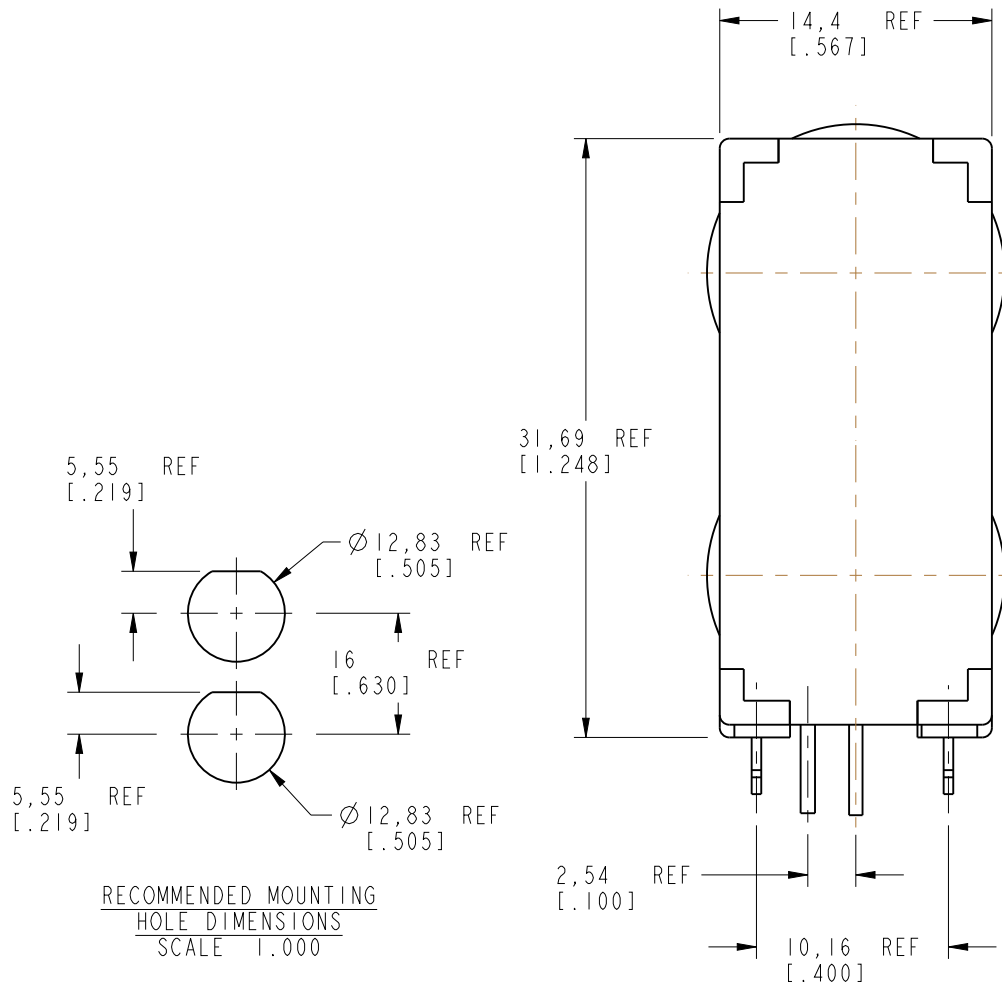
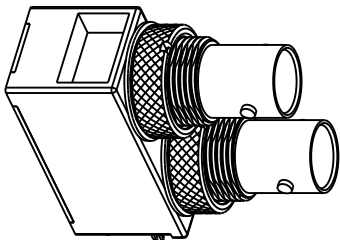
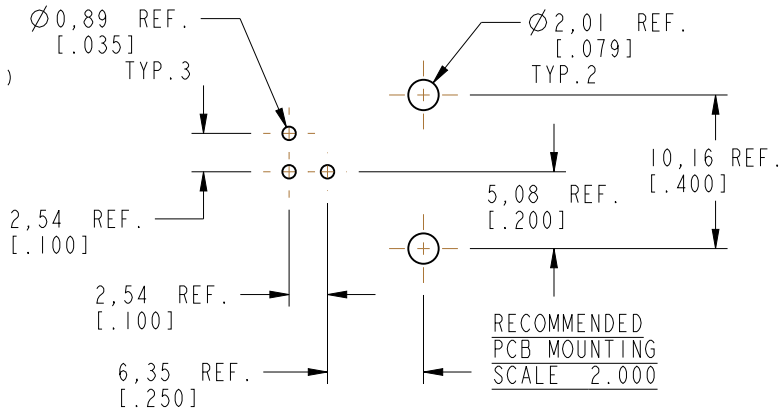
2. ELECTRICAL:
A. IMPEDANCE: 75 OHM
B. FREQUENCY RANGE: DC - 500 MHz

3. PACKAGING:
A. BULK PACKAGED IN TRAY
B. QUANTITY = 20 PIECES
C. HARDWARE SHOWN FOR REFERENCE ONLY
D. HARDWARE MUST BE PURCHASED SEPERATELY
E. SPANNER NUT = P/N 31-6080 (40 PC BULK PACK
F. LOCK WASHER = P/N 31-6079 (40 PC BULK PACK
G. HARDWARE KIT = P/N 31-6108, AND INCLUDES 2 SPANNER NUTS & 2 LOCKWASHERS IN 1 BAG.

THIRD ANGLE PROJ.

REVISIONS

REV	DESCRIPTION	DATE	ECO	APPR
A	RELEASE TO MFG.	6/6/02	44068	ORB
B	36.33 WAS 38.83; 15.73 WAS 18.23	9/25/02	44214	ORB
C	ADDED 3 G	6/6/03	44504	CPM
D	SEE SHEET I	6/16/05	45589	CPM
E	SEE SHEET I (RD-DMI009080IS4)	18-8-11	48249	CPM
F	CHANGE THE COMPONENT NAMES ON NOTE I	30-Jul-12	49105	SH
G	SEE SHEET I	1/27/14	49867	JTS



CUSTOMER OUTLINE DRAWING
ALL OTHER SHEETS ARE FOR INTERNAL USE ONLY

UNLESS OTHERWISE SPECIFIED, DIMENSIONS ARE IN METRIC AND TOLERANCES ARE: <0.5mm ± 0.05mm 0.5 - 6mm ± 0.1mm 6 - 30mm ± 0.2mm 30 - 120mm ± 0.3mm ANGLES ± 1°	MATERIAL -	DRAWN R.MAO	DATE 27-Jul-12	TITLE DUAL PORT BNC PCB MOUNT RECEPTACLE HOOK		Amphenol RF Danbury CT USA, Tainan, Taiwan, Shenzhen, China www.amphenolrf.com	
		ENGINEER O. BARTHELMES	DATE 08-Aug-11				
		REFERENCE EAR # AND	APPROVED S.HSIEH	DATE 18-Jun-13	SCALE: 2.5:1.0 SHEET 2 OF 2		DRAWING NO. B705003-NPB3G-75
		CONFIGURATION LEVEL: <input type="checkbox"/> <input type="checkbox"/> <input type="checkbox"/>	CAD FILE		DWG SIZE B	REV G	ITEM NO. 017050AAE00MA7F PART NO. 31-6071