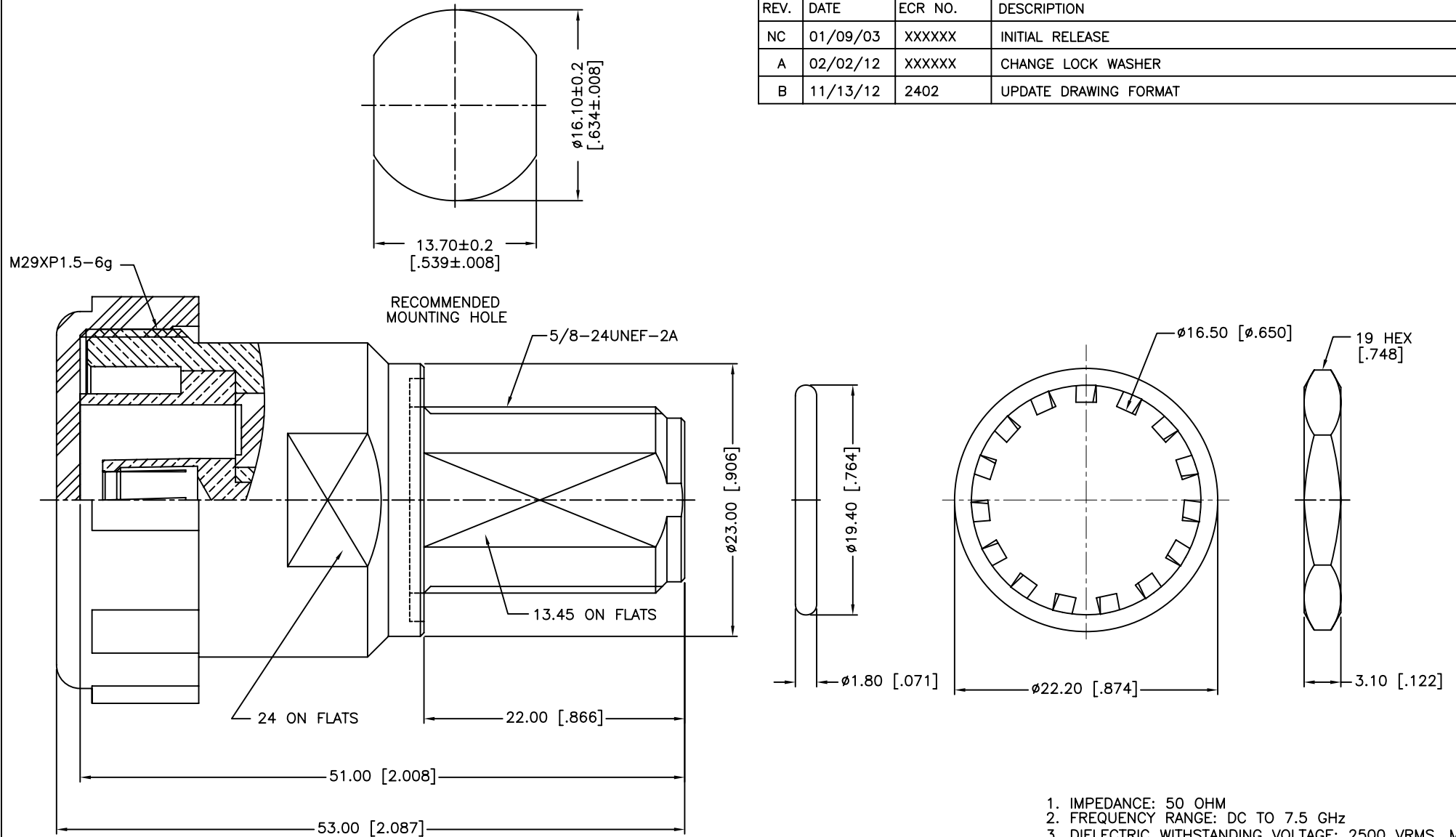


REV.	DATE	ECR NO.	DESCRIPTION
NC	01/09/03	XXXXXX	INITIAL RELEASE
A	02/02/12	XXXXXX	CHANGE LOCK WASHER
B	11/13/12	2402	UPDATE DRAWING FORMAT



1. IMPEDANCE: 50 OHM
2. FREQUENCY RANGE: DC TO 7.5 GHz
3. DIELECTRIC WITHSTANDING VOLTAGE: 2500 VRMS. MIN.
4. DURABILITY: 500 CYCLES MIN.
5. TEMPERATURE RANGE: -65°C TO +165°C
6. MAX. PANEL THICKNESS=6.5 MM

9	HEX NUT	BRASS	NEXCOTE	1	<div>UNLESS OTHERWISE SPECIFIED DIMENSIONS ARE IN MILLIMETERS. DIMENSIONS IN [ ] ARE IN INCHES AND FOR CUSTOMER REFERENCE ONLY.</div> <div>UNLESS OTHERWISE SPECIFIED TOLERANCES FOR MILLIMETERS ARE: 0.5 – 8mm ± 0.20mm 8 – 30mm ± 0.40mm 30 – 120mm ± 0.50mm</div> <div>UNLESS OTHERWISE SPECIFIED TOLERANCES FOR INCHES ARE: .020 – .315 = ± 0.007" .315 – 1.180 = ± 0.015" 1.180 – 4.724 = ± 0.020"</div> <div>DO NOT SCALE DRAWING</div>	APPROVALS	DATE	<div>Amphenol Connex</div>										
8	LOCK WASHER	BRASS	NEXCOTE	1		DRAWN	M.ZHANG						11/13/12	PART DESCRIPTION  N BULKHEAD JACK TO 7/16 JACK ADAPTER				
7	GASKET	SILICONE RUBBER	RED	1		CHECKED												
6	COVER	PE	BLUE	1		ISSUED			PART NO.  272183									
5	OUTER CONTACT	BRASS	NEXCOTE	1		SHEET	1 OF 1											
4	CONTACT PIN	BERYLLIUM COPPER	SILVER	1		CAD FILE	C:/CONNEX/272183.DWG		DWG. NO.	272183.DWG	REV.	B	SIZE	A	SCALE	NA		
3	CONTACT PIN	PHOSPHOR BRONZE	SILVER	1														
2	INSULATOR	PTFE	NATURAL	1														
1	BODY	BRASS	NEXCOTE	1														
	DESCRIPTION	MATERIAL	FINISH	QTY														