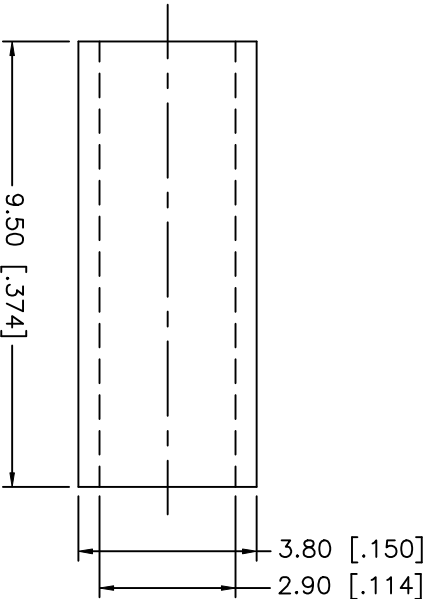
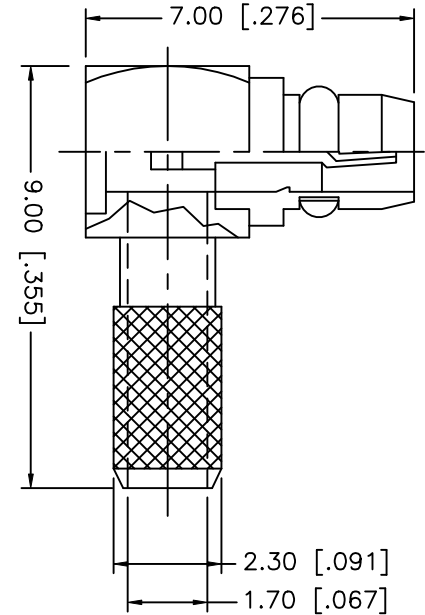
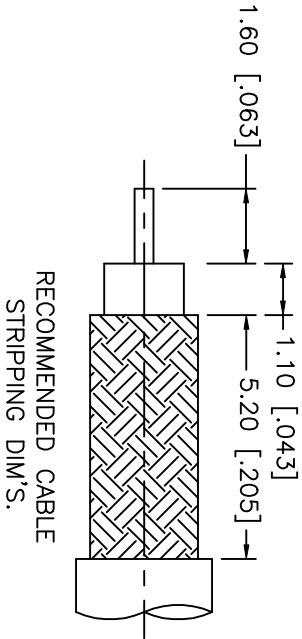
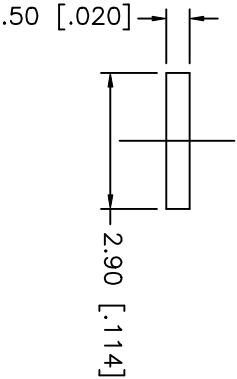


REV.	DATE	DESCRIPTION
NC	07/15/02	INITIAL RELEASE



CRIMP NOTES:

1. CRIMPED FERRULE
HEX CRIMP SIZE .128"
2. CONTACT PIN TO SOLDER



			UNLESS OTHERWISE SPECIFIED DIMENSIONS ARE IN MILLIMETERS		APPROVALS		DATE		<div>Amphenol - Connex</div> <div>CONNECTOR CORPORATION</div> <div>TITLE</div> <div>MMCX REVERSE POLARITY R/A CRIMP PLUG (FOR RG-174/U, 188A/U, 316/U)</div> <div>SIZE</div> <div>A</div> <div>FSCM NO.</div> <div>99001</div> <div>DWG. NO.</div> <div>262103RP.DWG</div> <div>REV.</div> <div>NC</div> <div>SCALE</div> <div>NA</div> <div>PART NO.</div> <div>262103RP</div> <div>SHEET</div> <div>1 OF 1</div>				
6	FERRULE	COPPER	GOLD	DIMENSIONS IN [] ARE IN INCHES FOR CUSTOMER REFERENCE ONLY	DRAWN	G.R.S.	07/15/02						
5	COVER	BRASS	GOLD		CHECKED								
4	RETAINER RING	BER. COPPER	GOLD		ISSUED								
3	CONTACT PIN	BRASS	GOLD										
2	INSULATOR	TEFLON	NATURAL	UNLESS OTHERWISE SPECIFIED TOLERANCES FOR INCHES ARE: .XXX = ± 0.005" .XX = ± 0.010" .X = ± 0.020"									
1	HOUSING/BODY	BRASS	GOLD										
DESCRIPTION		MATERIAL	FINISH	DO NOT SCALE DRAWING									