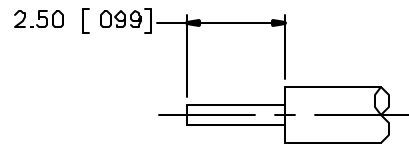
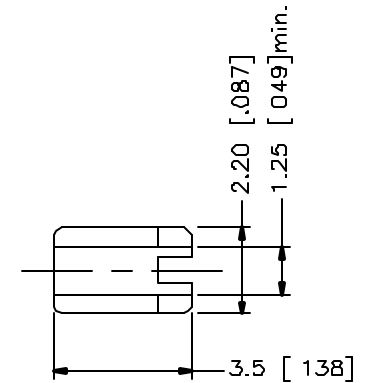
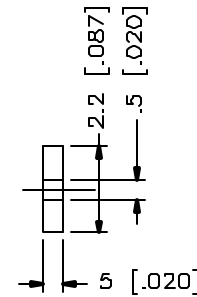
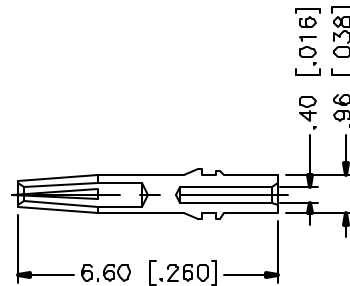
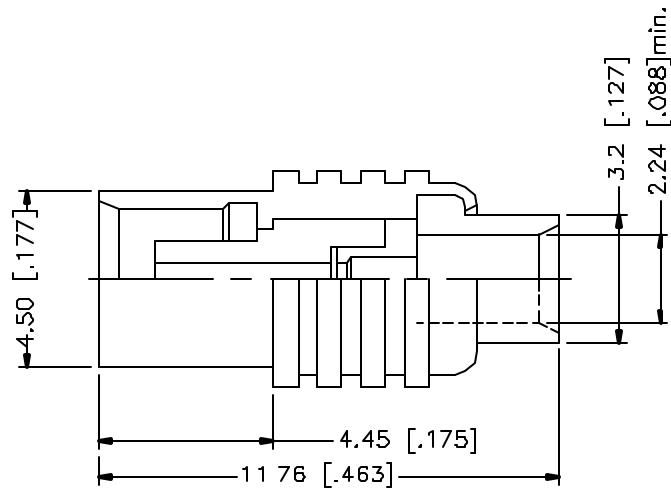


REV.	DATE	DESCRIPTION
A	11/12/01	UPDATE BARREL AND SOLDER BARREL




RECOMMENDED CABLE
STRIPPING DIMENSIONS



NOTE:

1. CONTACT PIN TO SOLDER

	DESCRIPTION	MATERIAL	FINISH	UNLESS OTHERWISE SPECIFIED DIMENSIONS ARE IN MILLIMETERS DIMENSIONS IN [] ARE IN INCHES FOR CUSTOMER REFERENCE ONLY	APPROVALS		DATE	 Connex Corporation			
					DRAWN	G R.S.					
1	BODY	BRASS	GOLD	UNLESS OTHERWISE SPECIFIED TOLERANCES FOR MILLIMETERS ARE: 0.5-6 = ± 0.2 6-30 = ± 0.4 30-120 = ± 0.6 120-315 = ± 1 315-1000 = ± 1.6 1000-2000 = ± 2.4	CHECKED			TITLE MCX DIRECT SOLDER JACK (FOR .047" SEMI RIGID CABLE)			
2	INSULATOR	TEFLON	NATURAL		ISSUED						
3	CONTACT PIN	BER. COPPER	GOLD					SIZE	FSDM NO	DWG. NO	REV.
4	SOLDER BARREL	BRASS	GOLD					A	99001	252157.DWG	A
5								SCALE	PART NO.	SHEET	
6								NA	252157	1 OF 1	
7											
8					DO NOT SCALE DRAWING						